

PQ05RA1/PQ05RA11 Series

OFF-state Low Dissipation Current 1A Output, Low Power-Loss Voltage Regulators

Features

- Low power-loss(Dropout voltage:MAX.0.5V)
- Compact resin full-mold package
- OFF-state low dissipation current
(I_{qs}:1μA, 1/10⁴ as compared to former model PQ05RF1)
- Built-in ON/OFF control function

Applications

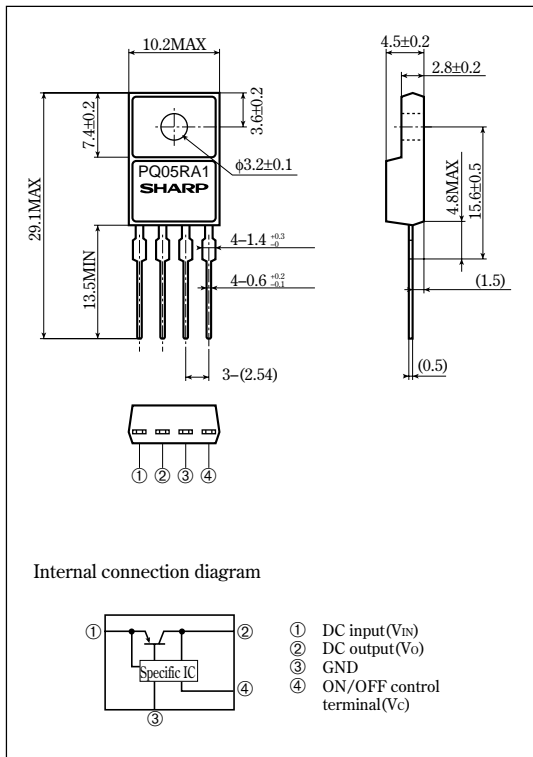
- Series power supplies for OA and AV equipment such as camcorders, word processors, etc.

Model Line-ups

Output voltage	5V Output	9V Output	12V Output
Output voltage precision:±5%	PQ05RA1	PQ09RA1	PQ12RA1
Output voltage precision:±2.5%	PQ05RA11	PQ09RA11	PQ12RA11

Outline Dimensions

(Unit : mm)



Absolute Maximum Ratings

(T_a=25°C)

Parameter	Symbol	Rating	Unit
*#1 Input voltage	V _{IN}	35	V
*#1 ON/OFF control terminal voltage	V _C	35	V
Output current	I _O	1	A
Power dissipation (No heat sink)	P _{D1}	1.5	W
Power dissipation (With infinite heat sink)	P _{D2}	15	W
*#2 Junction temperature	T _J	150	°C
Operating temperature	T _{opr}	-20 to +80	°C
Storage temperature	T _{stg}	-40 to +150	°C
*#3 Soldering temperature	T _{sol}	260	°C

*#1 All are open except GND and applicable terminals.

*#2 Overheat protection may operate at 125<=T_J<=150°C.

*#3 For 10s.

•Please refer to the chapter " Handling Precautions ".

SHARP

Notice In the absence of confirmation by device specification sheets, SHARP takes no responsibility for any defects that may occur in equipment using any SHARP devices shown in catalogs, data books, etc. Contact SHARP in order to obtain the latest device specification sheets before using any SHARP device.
Internet Internet address for Electronic Components Group <http://sharp-world.com/ecg/>

Electrical Characteristics

(Unless otherwise specified condition shall be $I_o=0.5A$, $T_a=25^\circ C^{*4}$)

Parameter	Symbol	Conditions	MIN.	TYP.	MAX.	Unit
Output voltage	V_o	-	4.75	5.0	5.25	V
			8.55	9.0	9.45	
			11.4	12.0	12.6	
			4.88	5.0	5.12	
			8.78	9.0	9.22	
			11.7	12.0	12.3	
Load regulation	R_{egL}	$I_o=5mA$ to 1.0A	-	0.1	2.0	%
Line regulation	R_{egI}	#5	-	0.2	2.5	%
Temperature coefficient of output voltage	TcV_o	$T_j=0$ to $125^\circ C$	-	± 0.004	-	%/ $^\circ C$
Ripple rejection	RR	Refer to Fig.2	45	55	-	dB
Dropout voltage	V_{F-o}	#6	-	-	0.5	V
ON-state voltage for control	$V_C(ON)$	-	2.0	-	-	V
ON-state current for control	$I_C(ON)$	-	-	-	200	μA
*7 OFF-state voltage for control	$V_C(OFF)$	-	-	-	0.8	V
OFF-state current for control	$I_C(OFF)$	$V_C=0.4V$	-	-	2	μA
Quiescent current	I_q	$I_o=0A$, $V_{IN}=35V$	-	-	8	mA
Output OFF-state consumption current	I_{qs}	$I_o=0A$, $V_{IN}=35V$ $V_C=0.4V$	-	-	1	μA

*4 PQ05RA1 series: $V_{IN}=7V$, PQ09RA1 series: $V_{IN}=11V$, PQ12RA1 series: $V_{IN}=14V$

*5 PQ05RA1/PQ05RA11: $V_{IN}=6$ to 16V
 PQ09RA1/PQ09RA11: $V_{IN}=10$ to 20V
 PQ12RA1/PQ12RA11: $V_{IN}=13$ to 23V

*6 Input voltage shall be the value when output voltage is 95% in comparison with the initial value.

*7 In case of opening control terminal \textcircled{C} , output voltage turns off.

Fig.1 Test Circuit

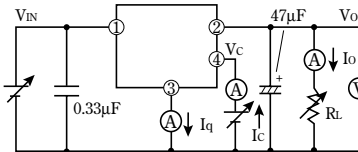
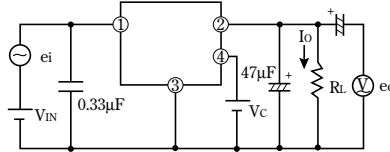
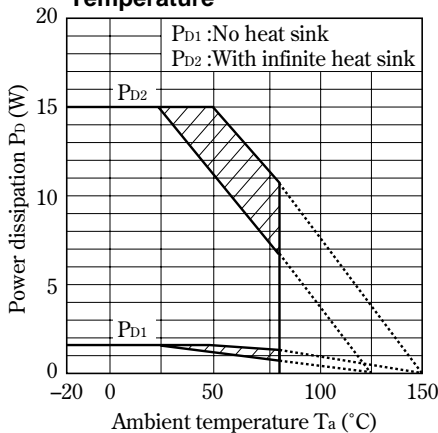


Fig.2 Test Circuit of Ripple Rejection



$f=120Hz$ (sine wave)
 $e_i(rms)=0.5V$
 $RR=20 \log(e_i(rms)/e_o(rms))$

Fig.3 Power Dissipation vs. Ambient Temperature



Note) Oblique line portion : Overheat protection may operate in this area.

Fig.4 Overcurrent Protection Characteristics (Typical value)

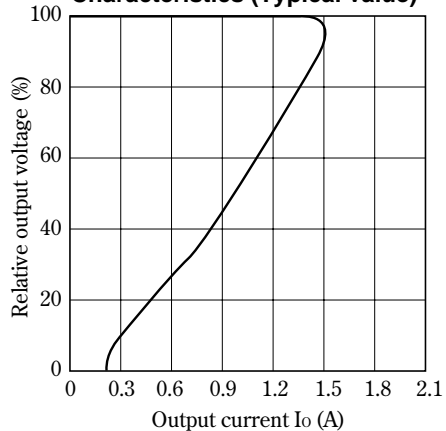


Fig.5 Output Voltage Deviation vs. Junction Temperature (PQ05RA1/11)

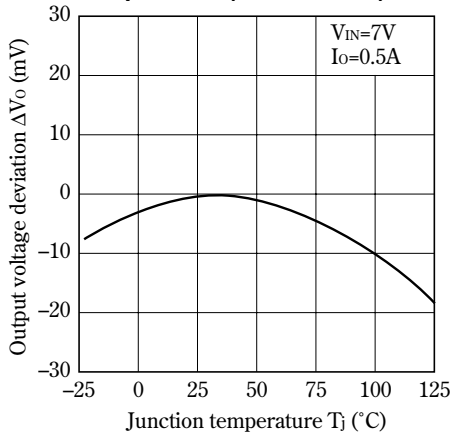


Fig.6 Output Voltage Deviation vs. Junction Temperature (PQ09RA1/11)

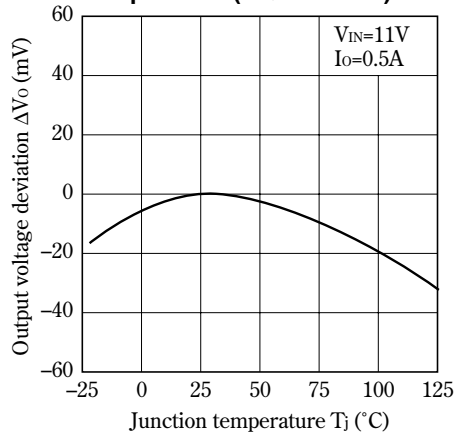


Fig.7 Output Voltage Deviation vs. Junction Temperature (PQ12RA1/11)

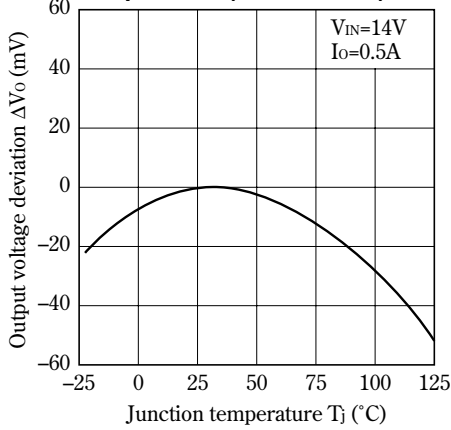


Fig.8 Output Voltage vs. Input Voltage (PQ05RA1/11)

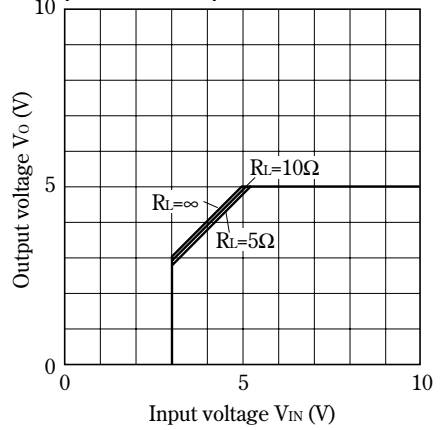


Fig.9 Output Voltage vs. Input Voltage (PQ09RA1/11)

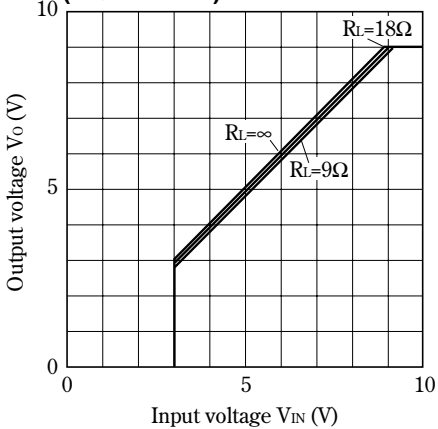


Fig.10 Output Voltage vs. Input Voltage (PQ12RA1/11)

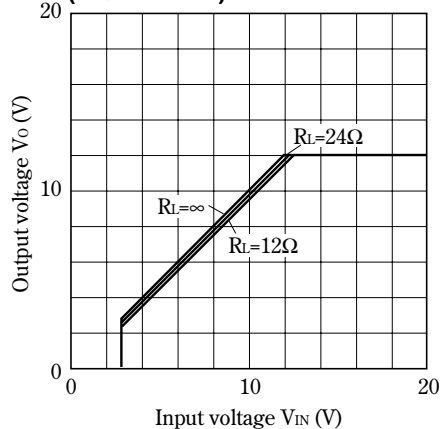


Fig.11 Circuit Operating Current vs. Input Voltage (PQ05RA1/11)

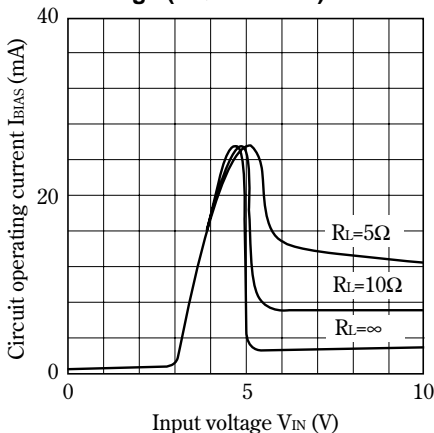


Fig.12 Circuit Operating Current vs. Input Voltage (PQ09RA1/11)

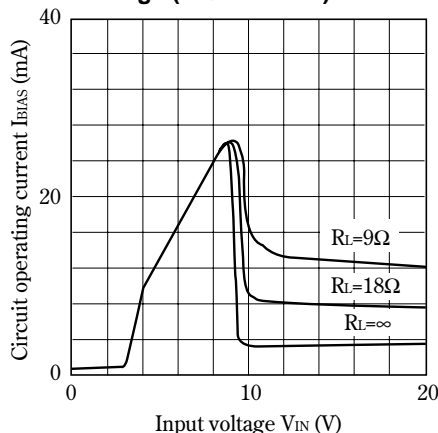


Fig.13 Circuit Operating Current vs. Input Voltage (PQ12RA1/11)

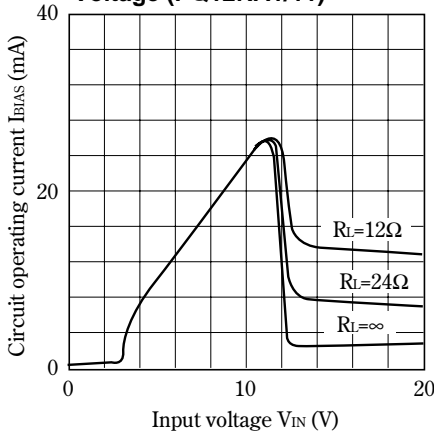


Fig.14 Dropout Voltage vs. Junction Temperature

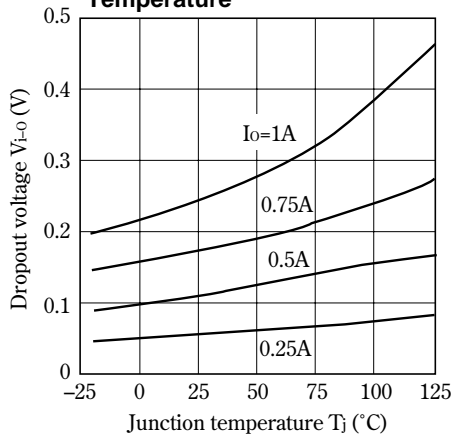


Fig.15 Quiescent Current vs. Junction Temperature

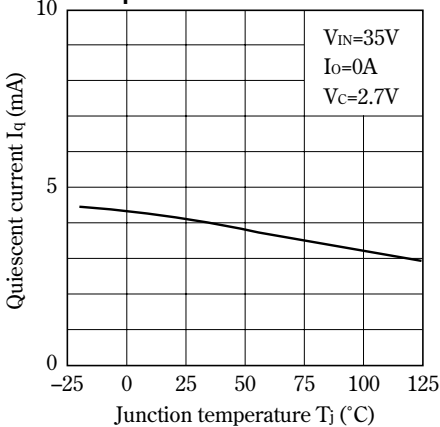


Fig.16 Ripple Rejection vs. Input Ripple Frequency

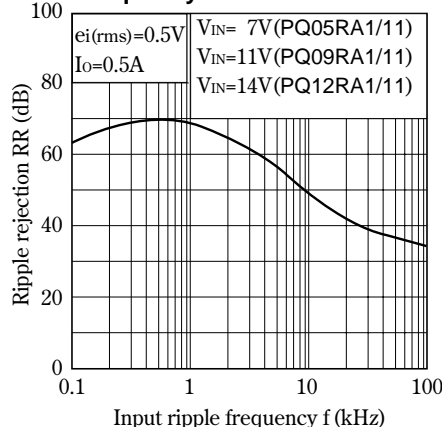


Fig.17 Ripple Rejection vs. Output Current

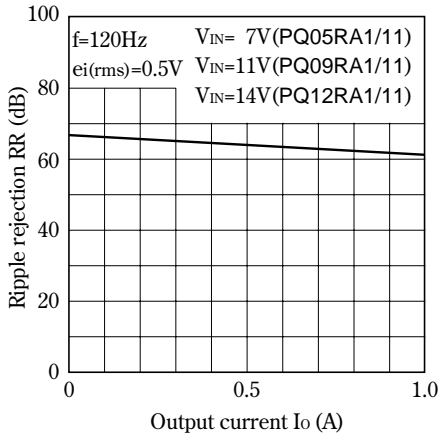


Fig.18 Output Peak Current vs. Junction Temperature

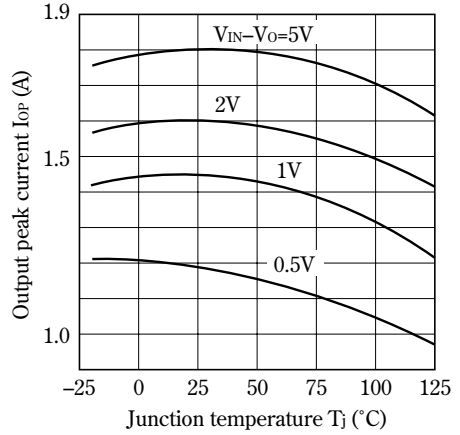
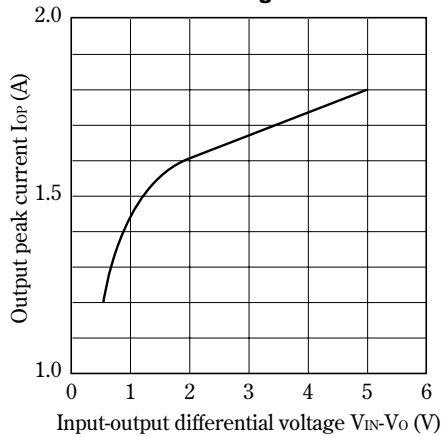
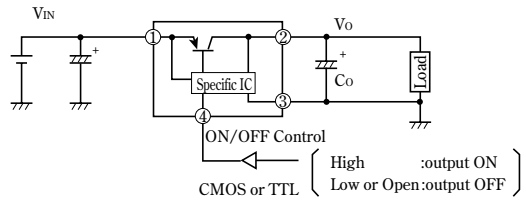


Fig.19 Output Peak Current vs. Input-output Differential Voltage



■ Typical Application



NOTICE

- The circuit application examples in this publication are provided to explain representative applications of SHARP devices and are not intended to guarantee any circuit design or license any intellectual property rights. SHARP takes no responsibility for any problems related to any intellectual property right of a third party resulting from the use of SHARP's devices.
- Contact SHARP in order to obtain the latest device specification sheets before using any SHARP device. SHARP reserves the right to make changes in the specifications, characteristics, data, materials, structure, and other contents described herein at any time without notice in order to improve design or reliability. Manufacturing locations are also subject to change without notice.
- Observe the following points when using any devices in this publication. SHARP takes no responsibility for damage caused by improper use of the devices which does not meet the conditions and absolute maximum ratings to be used specified in the relevant specification sheet nor meet the following conditions:
 - (i) The devices in this publication are designed for use in general electronic equipment designs such as:
 - Personal computers
 - Office automation equipment
 - Telecommunication equipment [terminal]
 - Test and measurement equipment
 - Industrial control
 - Audio visual equipment
 - Consumer electronics
 - (ii) Measures such as fail-safe function and redundant design should be taken to ensure reliability and safety when SHARP devices are used for or in connection with equipment that requires higher reliability such as:
 - Transportation control and safety equipment (i.e., aircraft, trains, automobiles, etc.)
 - Traffic signals
 - Gas leakage sensor breakers
 - Alarm equipment
 - Various safety devices, etc.
 - (iii) SHARP devices shall not be used for or in connection with equipment that requires an extremely high level of reliability and safety such as:
 - Space applications
 - Telecommunication equipment [trunk lines]
 - Nuclear power control equipment
 - Medical and other life support equipment (e.g., scuba).
- Contact a SHARP representative in advance when intending to use SHARP devices for any "specific" applications other than those recommended by SHARP or when it is unclear which category mentioned above controls the intended use.
- If the SHARP devices listed in this publication fall within the scope of strategic products described in the Foreign Exchange and Foreign Trade Control Law of Japan, it is necessary to obtain approval to export such SHARP devices.
- This publication is the proprietary product of SHARP and is copyrighted, with all rights reserved. Under the copyright laws, no part of this publication may be reproduced or transmitted in any form or by any means, electronic or mechanical, for any purpose, in whole or in part, without the express written permission of SHARP. Express written permission is also required before any use of this publication may be made by a third party.
- Contact and consult with a SHARP representative if there are any questions about the contents of this publication.