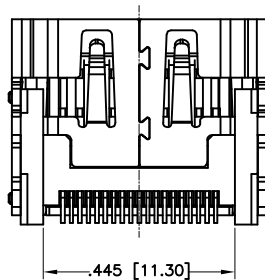
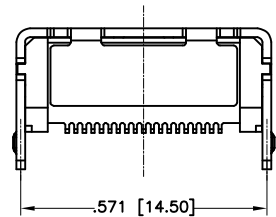
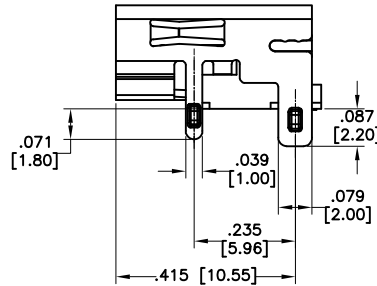
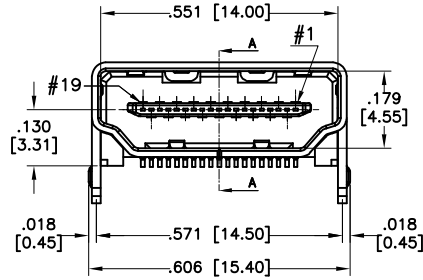
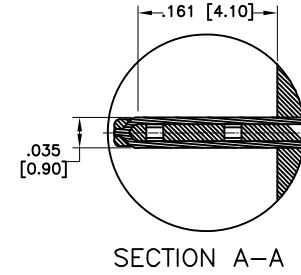
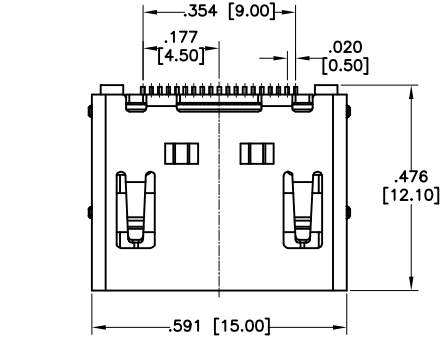
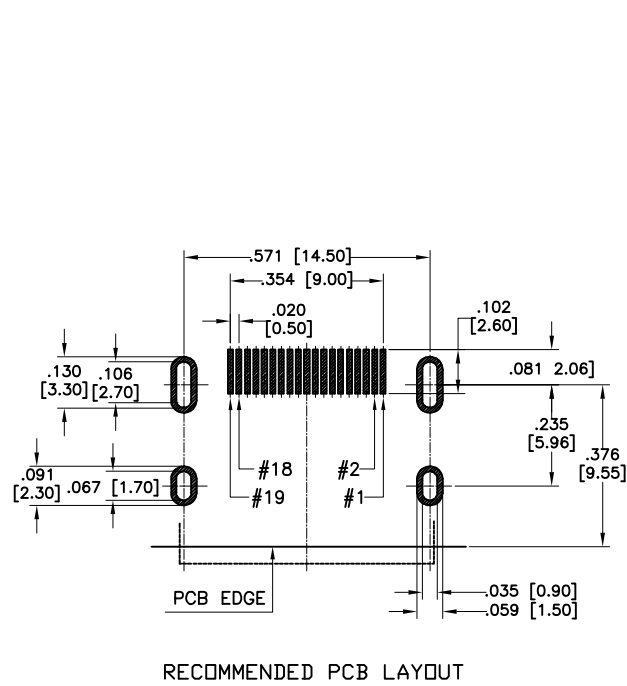


APPROVED: \_\_\_\_\_  
 DATE: \_\_\_\_\_ TITLE: \_\_\_\_\_

Rev	AWO #	Description	Date	Appr
-		RELEASED	12/2/13	
A		ADDED DIM.	9/1/16	AY/AT



**SPECIFICATIONS:**

Material:  
 Insulator: Hi-Temp Thermoplastic, rated UL 94V-0  
 Insulator color: Black  
 Shield: Copper Alloy, Nickel Plated  
 Contacts: Copper Alloy  
 Plating:  
 Gold flash over Nickel underplate on contact area,  
 Tin over Copper underplate on tails  
 Electrical:  
 Current rating: 0.5 A per pin.  
 Voltage rating: 40 VAC  
 Contact resistance: 60 mohms max.  
 Insulation resistance: 100 Mohms min.  
 Dielectric withstanding voltage: 500 VAC for 1 minute  
 Temperature Rating:  
 Operating temperature: -40°C to +85°C  
 Environmental:  
 Lead free, RoHS compliant.



PACKAGED ON TAPE & REEL

UNLESS OTHERWISE SPECIFIED ALL DIMENSIONS ARE INCHES [MM] TOLERANCES: EXCEPT AS NOTED		<b>ADAM TECH</b> 909 Rahway Avenue, Union, NJ 07083 Phone: 908-687-5000 Fax: 908-687-5710	
INCHES HOLES			
.X ± .10	Ø.X ± .10	TITLE <b>HDMI CONNECTOR, 19 POS, RIGHT ANGLE          SURFACE MOUNT, SEL GOLD PLATED</b>	
.XX ± .020	Ø.XX ± .015		
.XXX ± .015	Ø.XXX ± .010		
APPROVALS		DATE	
DRAWN	AY	12/2/13	
CHECKED	NP	12/2/13	
APPROVED			
SIZE	PART NO.	REV.	
X	HDMI-S-RA-SMT-T/R	A	
REF:	S00009T	SCALE:	NTS
		SHEET 1 OF 1	

6

5

4

3

2

1

6

5

4

3

2

1