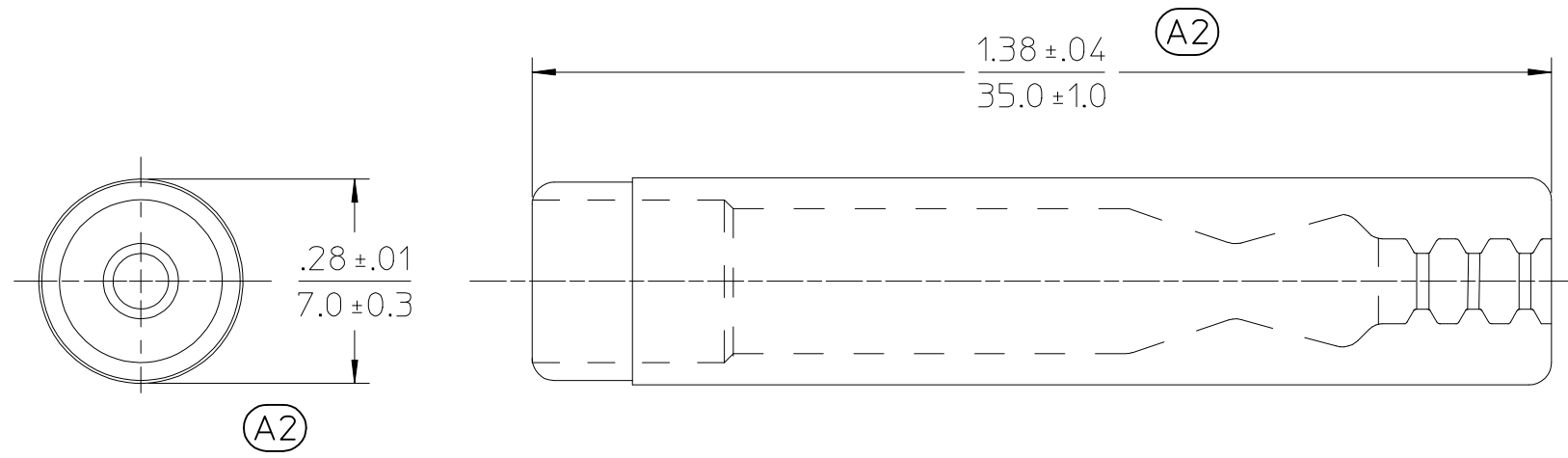


METERIAL NUMBER	ENGINEERING NUMBER	COLOR
191610334	SPR-1	SEMI-TRASPARENT TEAL
191610670	SPR-1-CL	TRASPARENT CLEAR



- NOTES:
1. MATERIAL: PVC
  2. COLOR: SEE CHART.
  3. PARTS ARE ROHS COMPLIANT.

ORIGINALLY DRAWN  
BY BRE 2003/08/07

UPDATE DIM TOL EC NO: IPG2016-1554 DRWN: GROJAS01 2016/05/24 CHKD: APPR: JMACNEIL 2016/05/31	QUALITY SYMBOLS 	GENERAL TOLERANCES (UNLESS SPECIFIED)		DIMENSION STYLE IN/MM		SCALE 4:1	DESIGN UNITS INCH	THIRD ANGLE PROJECTION		
			mm	INCH	DRAWN BY GROJAS01	DATE 2014/12/22	TITLE SPLASH PROOF INSULATOR FEMALE RECEPTACLE 22-14 AWG <b>molex</b>			
		4 PLACES	± ---	± ---	CHECKED BY JMACNEIL	DATE 2014/12/22				
		3 PLACES	± ---	± .005	APPROVED BY		DATE	DOCUMENT NO. SD-19161-025		SHEET NO. 1 OF 1
2 PLACES	± 0.25	± .010	MATERIAL NO.		DATE	THIS DRAWING CONTAINS INFORMATION THAT IS PROPRIETARY TO MOLEX INCORPORATED AND SHOULD NOT BE USED WITHOUT WRITTEN PERMISSION				
1 PLACE	± 0.13	± ---	DRAFT WHERE APPLICABLE MUST REMAIN WITHIN DIMENSIONS		SIZE A					
0 PLACE	±	±								