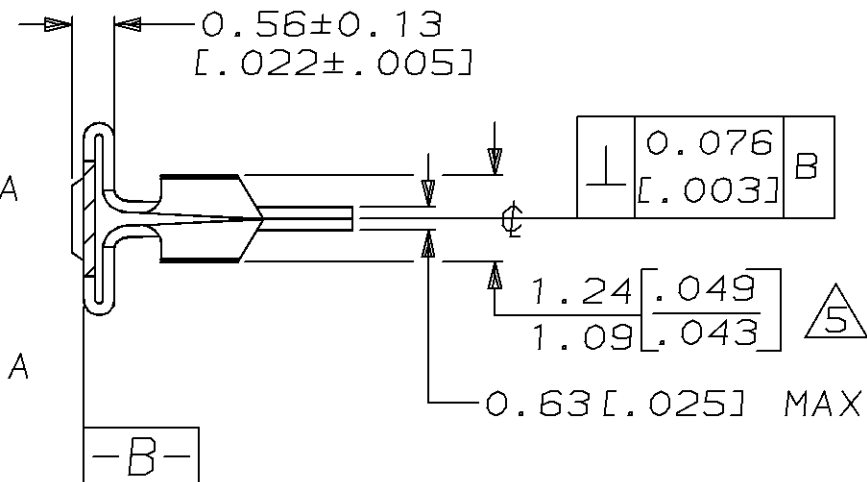
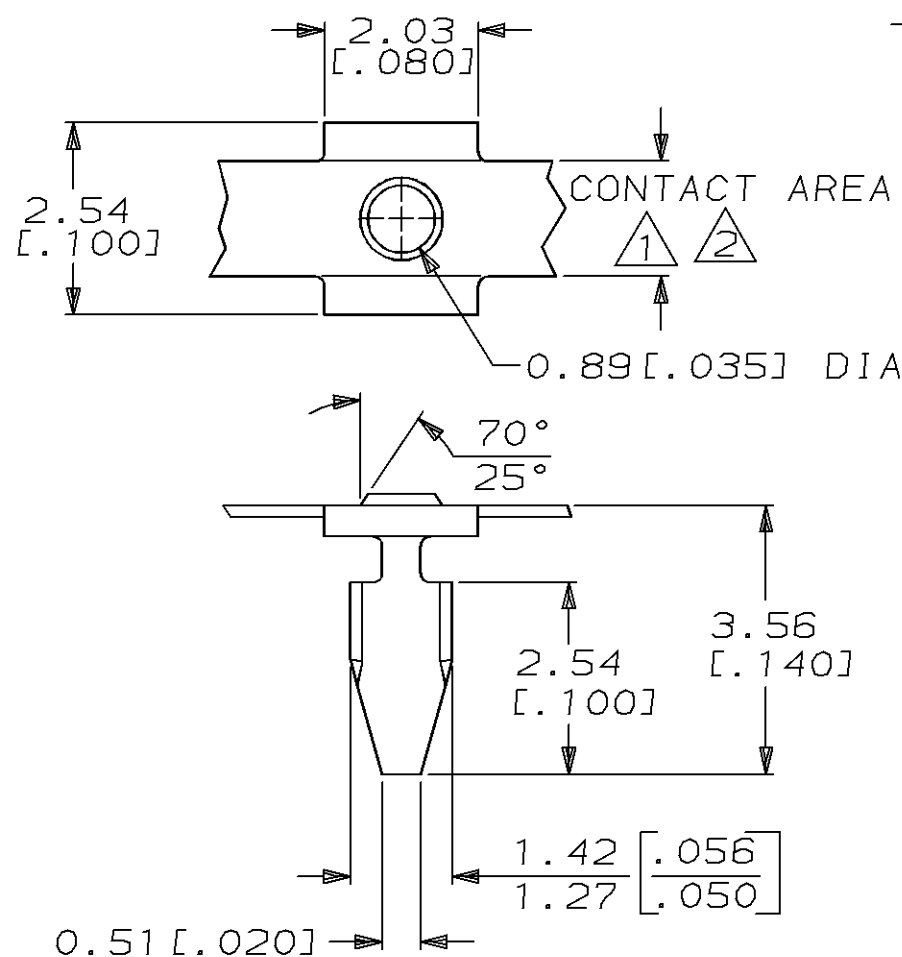
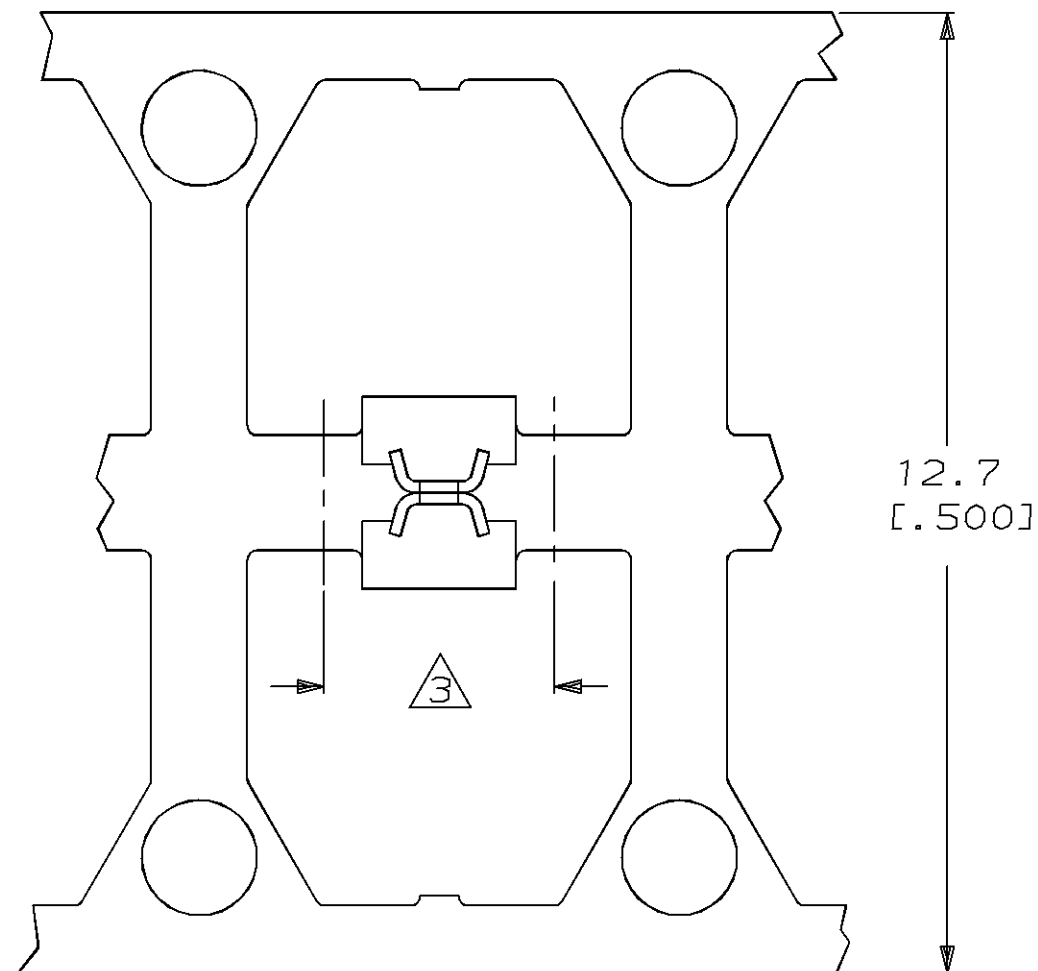


THIS DRAWING IS UNPUBLISHED. RELEASED FOR PUBLICATION, 19  
 © COPYRIGHT 19 BY AMP INCORPORATED, HARRISBURG, PA. ALL INTERNATIONAL RIGHTS RESERVED. AMP PRODUCTS MAY BE COVERED BY U.S. AND FOREIGN PATENTS AND/OR PATENTS PENDING.

LOC DIST  
 AF 50

REVISIONS				
ZONE	LTR	DESCRIPTION	DATE	APPROVED
	AC	REVISED PER 0L10-0114-97	17/MAR/97	PF/JP



- 1 PLATED WITH 0.000762 [0.000030] GOLD, GOLD FLASH ON THE REMAINDER. GOLD FLASH IS FOR MANUFACTURING PURPOSES ONLY AND AT THE SPECIFIED THICKNESS MAY NOT BE VISIBLE TO THE NAKED EYE.
- 2 INLAID GOLD ALLOY
- 3 APPLICATOR CUT-OFF 3.05 [0.120] MAX
- 4 DIMENSION IN BRACKETS ARE IN INCHES.
- 5 MEASURED WHEN LEGS ARE COMPRESSED TO ELIMINATE GAP

OBSOLETE

LOOSE PIECE FORM	FINISH	MATERIAL	PART NO
	GOLD 2	NICKEL SILVER, 0.15 [0.006] THK	62313-5
62380-4	GOLD 1	NICKEL SILVER, 0.15 [0.006] THK	62313-4
62380-3		NICKEL SILVER, 0.15 [0.006] THK	62313-3

UNLESS OTHERWISE SPECIFIED DIMENSIONS ARE IN mm TOLERANCES ON: 2 PL DEC ± 0.38 [0.015] 3 PL DEC ± - ANGLES ± 1°	DR 2/26/87 D HOLLINGSWORTH CHK 3/5/87 6 YETTER APPD 3/9/87 K RANDOLPH APPD 3/9/87 T SHUTTER	<b>AMP</b> AMP INCORPORATED Harrisburg, Pa. 17105 NAME CONTACT, BUTTON, KEYBOARD SIZE B FSCM NO 00779 DRAWING NO 62313 SCALE 10:1 SHEET 1 OF 1
MATERIAL SEE TABLE	PRODUCT SPEC 108-2010	
FINISH SEE TABLE	APPLICATION SPEC 114-2014	
	WEIGHT -	

**METRIC**