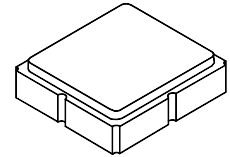


# SF2167E

## 1382.24 MHz SAW Filter



SM3030-8

- **SAW Filter for Digital Television**
- **Complies with Directive 2002/95/EC (RoHS)**



### Characteristics :

Balance-to-balanced operation

Terminating source/load impedance:  $Z_S = 150 \Omega$

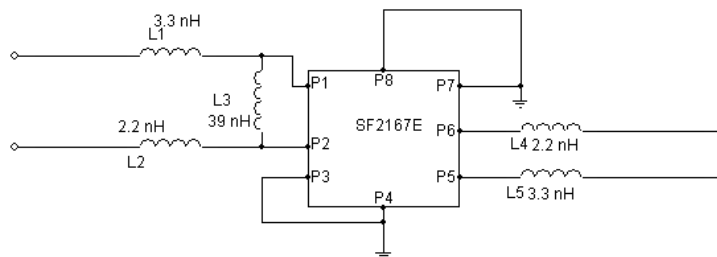
### Maximum Rating

Rating	Value	Units
Input Power Level	0	dBm
DC Voltage on any Non-ground Terminal	3	V
Operating Temperature Range	-40 to +85	°C
Storage Temperature Range	-50 to +95	°C
Maximum Soldering Profile, 5 cycles/ 10 seconds maximum	265	°C

Characteristic	Sym	Notes	Min	Typ	Max	Units
Center Frequency	$f_C$			1382.24		MHz
Insertion Loss, 1362.24 to 1402.24 MHz	IL			3.4	4.5	dB
Amplitude Ripple, 1362.24 to 1402.24 MHz				0.5	2.0	dB
Group Delay Ripple, 1362.24 to 1402.24 MHz				10	30	ns <sub>P-P</sub>
Attenuation, 0 dB Reference:						
500 to 1300.18 MHz			42	52		dB
1464.30 to 1490 MHz			45	50		
1490 to 2000 MHz			40	50		

Case Style	SM3030-8 3.0 x 3.0 mm Nominal Footprint					
Lid Symbolization (Y=year, WW=week, S=shift) dot=pin 1 indicator	854, YWWS					
Standard Reel Quantity	Reel Size 7 inch					500 Pieces/Reel
	Reel Size 13 inch					3000 Pieces/Reel

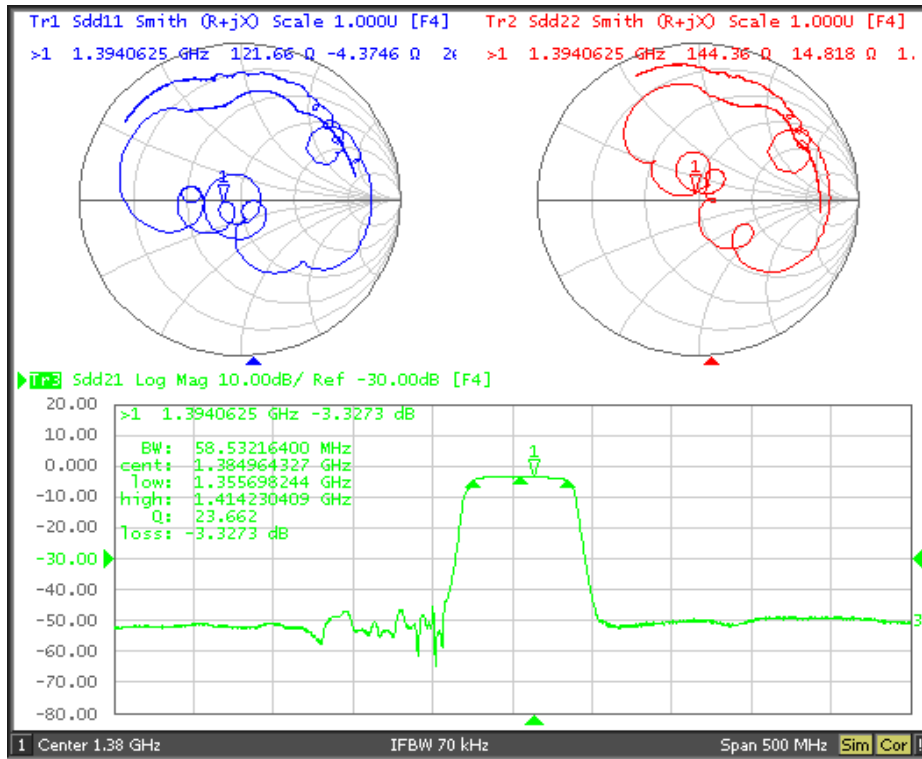
### Tuning Network, 150 ohm Balanced Source/Load



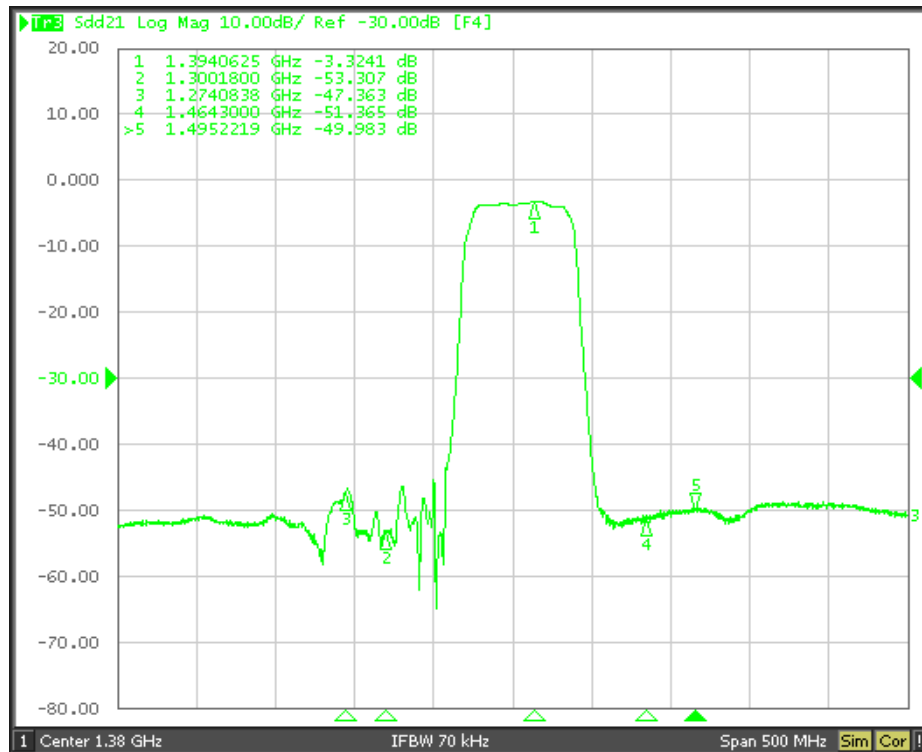
### NOTES:

1. US and international patents may apply.
2. Murata, stylized Murata logo, and Murata N.A., Inc. are registered trademarks of Murata Manufacturing Co., Ltd.
3. Electrostatic Sensitive Device. Observe precautions for handling.

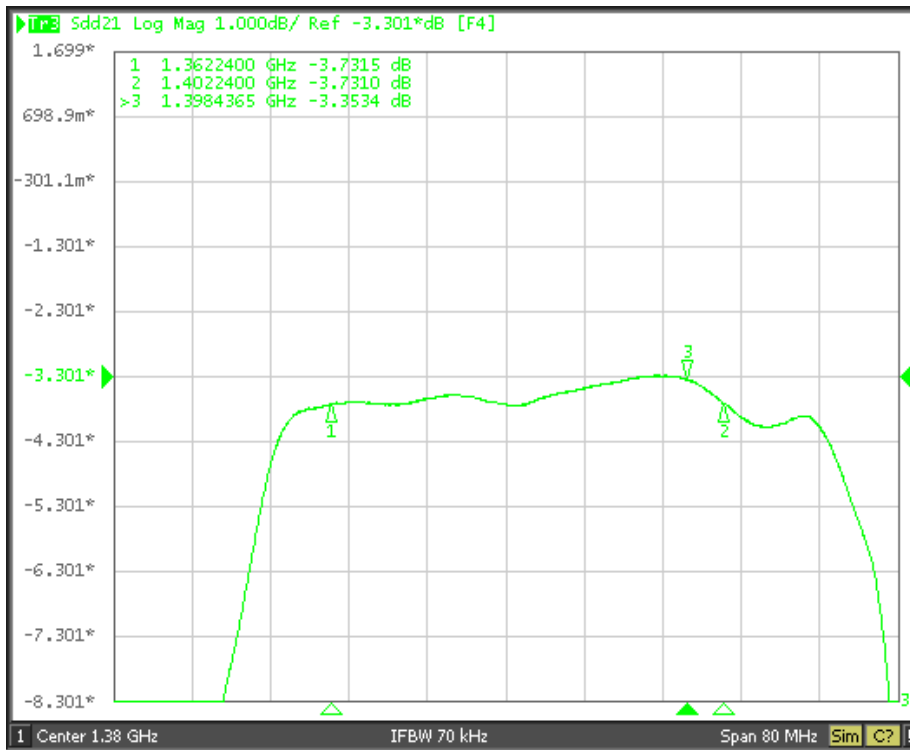
## Filter Wideband S21, S11 and S22 Plots



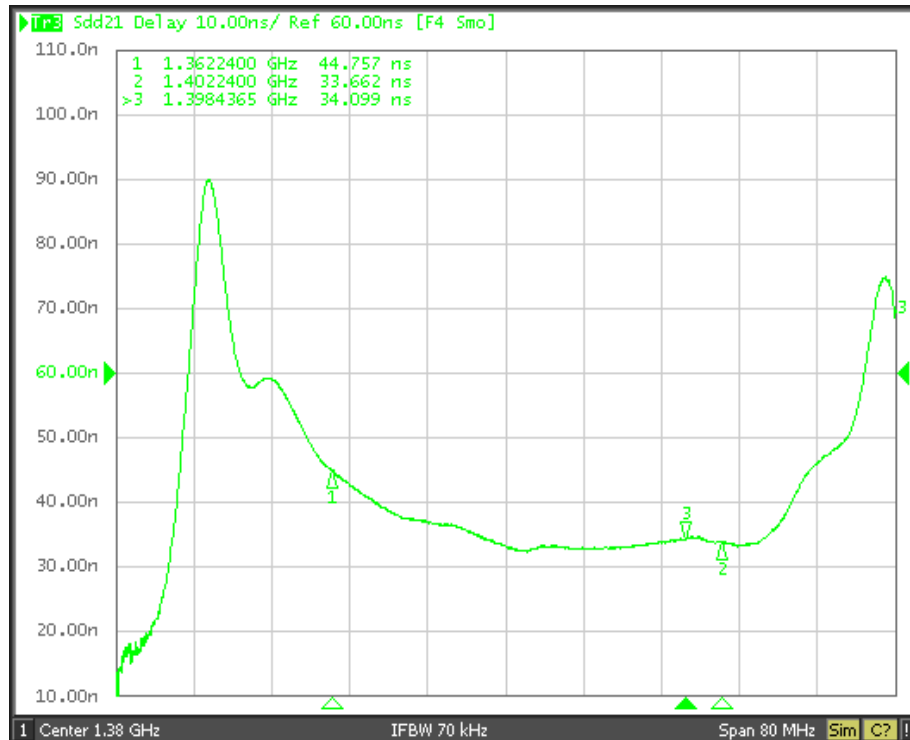
## Filter Shape Factor Plot



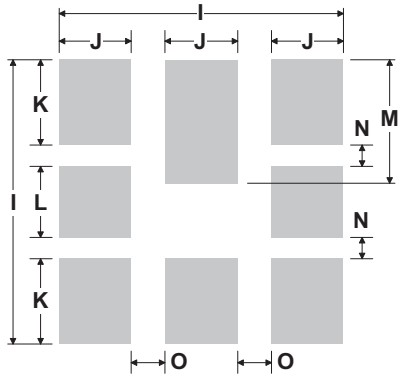
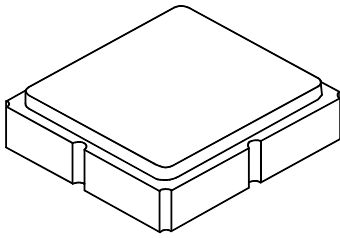
## Filter Passband Plot



## Filter Group Delay Plot



## 8-Terminal Ceramic Surface-Mount Case 3.0 X 3.0 mm Nominal Footprint



PCB Footprint Top View

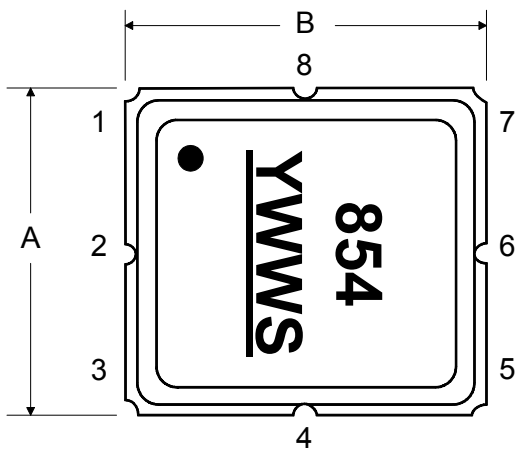
### Case and PCB Footprint Dimensions

Dimension	mm			Inches		
	Min	Nom	Max	Min	Nom	Max
A	2.87	3.0	3.13	0.113	0.118	0.123
B	2.87	3.0	3.13	0.113	0.118	0.123
C	1.14	1.27	1.40	0.045	0.050	0.055
D	0.79	0.92	1.05	0.031	0.036	0.041
E	0.62	0.75	0.88	0.024	0.029	0.034
F	0.47	0.60	0.73	0.018	0.024	0.029
G	0.47	0.60	0.73	0.018	0.024	0.029
H	1.07	1.20	1.33	0.042	0.047	0.052
I		3.19			0.126	
J		0.81			0.032	
K		0.96			0.038	
L		0.81			0.032	
M		1.39			0.055	
N		0.23			0.009	
O		0.38			0.015	

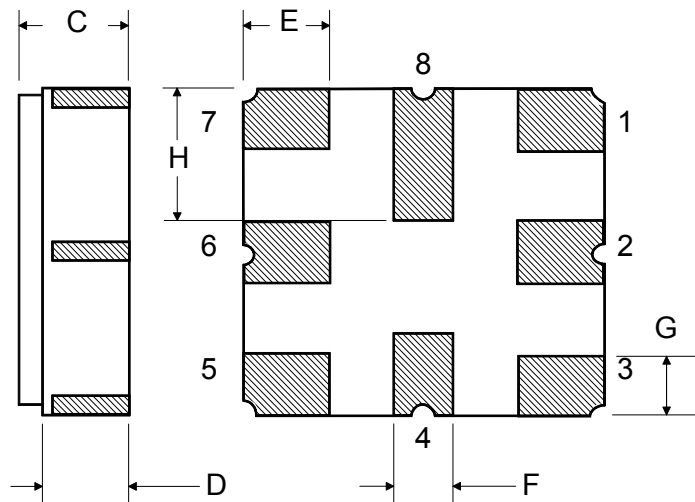
### Case Materials

Materials	
Solder Pad Plating	0.3 to 1.0 $\mu\text{m}$ Gold over 1.27 to 8.89 $\mu\text{m}$ Nickel
Lid Plating	2.0 to 3.0 $\mu\text{m}$ Nickel
Body	$\text{Al}_2\text{O}_3$ Ceramic
	Pb Free

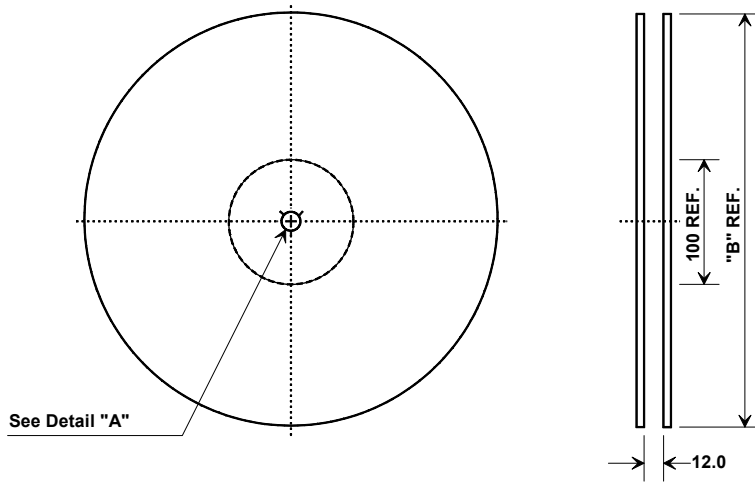
TOP VIEW



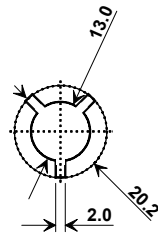
BOTTOM VIEW



## Tape and Reel Specifications



"B"		Quantity Per Reel
Inches	millimeters	
7	178	500
13	330	3000



## COMPONENT ORIENTATION and DIMENSIONS

Carrier Tape Dimensions	
Ao	3.35 mm
Bo	3.35 mm
Ko	1.40 mm
Pitch	8.0 mm
W	12.0 mm

