

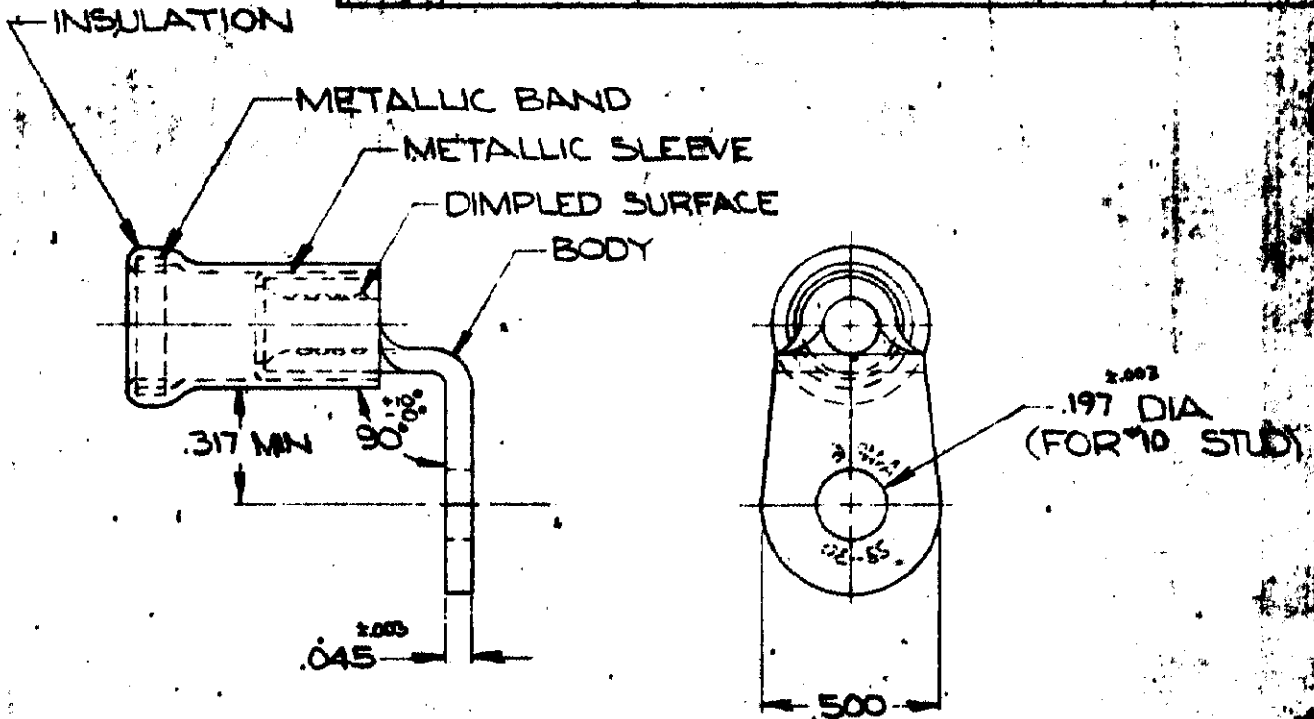
MADE IN AMERICAN PROJECTION

G *(Signature)*

BY AMP INCORPORATED. ALL RIGHTS RESERVED. AMP PRODUCTS COVERED BY PATENTS AND/OR TRADE MARKS PENDING.

REVISIONS

LTR	DESCRIPTION	DATE	APPROVED
B	REDRAW & REVISED R-8563	1-5-70	<i>(Signature)</i>
C	REV 8-1480	5-5-80	JT



FOR .317 MAX WIRE INS. DIA

WIRE TERMINAL	322887	BODY: COPPER (QQ-C-576)
		TIN PL (MIL-T-10727)
		INSULATION: PVC COLOR: BLUE
		METALLIC SLEEVE: COPPER (QQ-C-576)
		METALLIC BAND: STEEL (ASTM A109) QQ-S-698
QTY	DESCRIPTION	PART NO.
		MATERIAL & FINISH
UNLESS OTHERWISE SPECIFIED DIMENSIONS ARE IN INCHES		AMP INCORPORATED HARRISBURG, PENNSYLVANIA
TOLERANCES ON: DECIMALS ± .008 ANGLES ± 5°		
MATERIAL	CONTRACT NO.	NAME
	DR. <i>(Signature)</i> 11-10-69	WIRE TERMINAL
DATE TABLE	CHK <i>(Signature)</i> 1-5-70	AMPLI-BOND-RING TONGUE-BENT 90°
	APPD <i>(Signature)</i> 1-6-70	WIRE SIZE: #6
	RE <i>(Signature)</i> 1-7-70	SIZE
	DSGN APPD <i>(Signature)</i>	CODE IDENT NO.
		NUMBER
		A 00779 322887