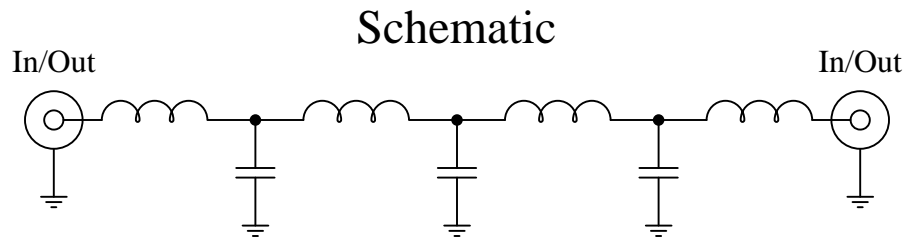


Part Number: CLPFL-0200

Low Pass Range  
DC to 200 MHz



### Features:

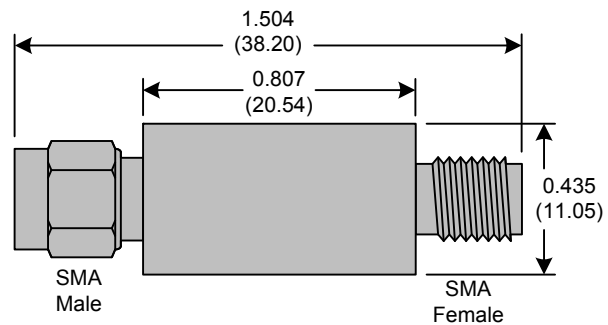
- 7<sup>th</sup> Order Butterworth Response
- 50Ω SMA Connectors

### Applications:

- Test Equipment
- Lab Use

### Maximum Ratings:

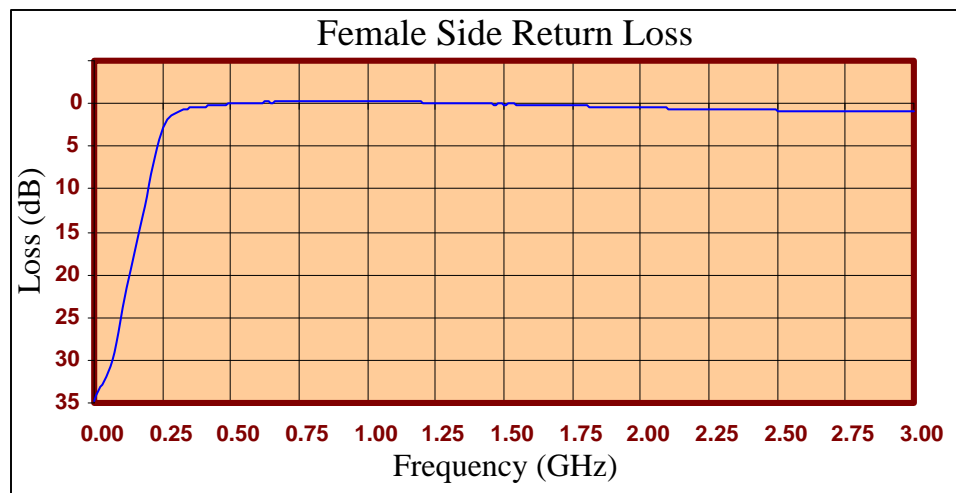
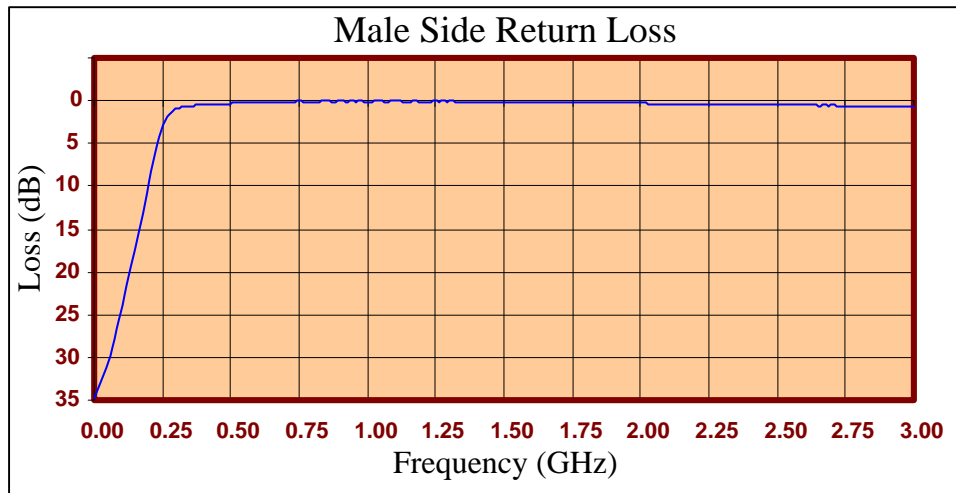
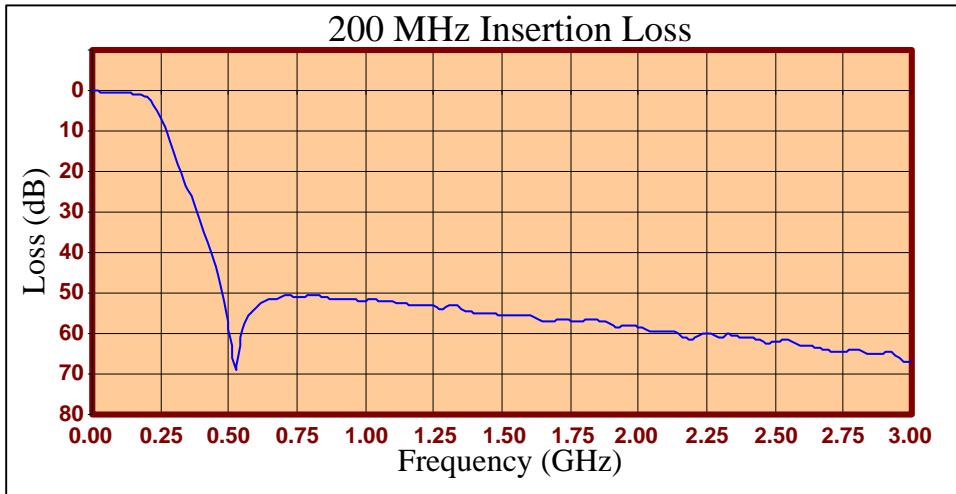
- +36dBm (4 Watts)
- Operating Temperature: -40°C to 85°C
- Storage Temperature: -55°C to 100°C



Crystek's new line of Low Pass Filters are designed in a rugged SMA housing. This filter line has excellent out-of-band rejection. Designed for Test Equipment and General Lab Use.

Rev D

Page 1 of 3





FREQ (MHz)	INSERTION LOSS (dB)	Male Return Loss (dB)	Female Return Loss (dB)
0.3	0.17	34.76	34.73
15.3	0.18	33.64	33.68
30.3	0.29	32.51	32.76
45.3	0.31	31.32	31.93
60.3	0.33	29.88	30.73
75.3	0.40	27.89	28.98
90.3	0.43	25.88	26.64
105	0.52	23.79	23.99
120	0.58	21.51	21.55
135	0.65	19.49	19.42
150	0.79	17.42	17.27
165	0.96	15.37	15.18
180	1.24	13.16	12.98
195	1.64	10.77	10.76
210	2.20	8.36	8.32
225	3.34	6.07	6.15
240	4.84	4.20	4.21
255	6.81	2.78	2.85
270	9.22	1.83	1.97
285	11.99	1.30	1.38
300	15.02	0.97	1.10
330	20.69	0.71	0.72
405	35.02	0.48	0.37
450	43.65	0.38	0.22
510	64.73	0.31	0.03
585	54.39	0.26	-0.08
705	50.72	0.14	-0.18
810	50.43	0.13	-0.24
900	51.74	0.08	-0.23
1005	51.95	0.10	-0.21
1245	53.22	0.08	-0.07
1500	55.48	0.13	0.12
1755	56.84	0.25	0.31
1995	58.36	0.28	0.46
2250	59.91	0.41	0.65
2505	62.19	0.49	0.81
2745	64.49	0.61	0.90
3000	67.04	0.67	1.01

**Product Control:**

Crystek Part Number:	CLPFL-0200	Release Date:	03-Aug-2015
Revision Level:	D	Responsible:	K. Piotrowicz

Rev D
Page 3 of 3

