

# Coaxial Bandpass Filter

50Ω 800 to 1050 MHz

## VBFZ-925-S+



Generic photo used for illustration purposes only

CASE STYLE: FF1145

Connectors	Model
SMA	VBFZ-925-S+

**+RoHS Compliant**

The +Suffix identifies RoHS Compliance. See our web site for RoHS Compliance methodologies and qualifications

### Maximum Ratings

Operating Temperature	-55°C to 100°C
Storage Temperature	-55°C to 100°C
RF Power Input*	7W at 25°C

\*Passband rating, derate linearly to 3W at 100°C ambient. Permanent damage may occur if any of these limits are exceeded.

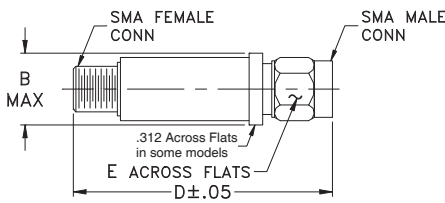
### Features

- Good Rejection, 30dB up to 18GHz
- Low insertion loss
- Excellent power handling, 7W
- Temperature stable LTCC internal structure
- Rugged stainless steel unbody
- Protected by US Patent 6,943,646

### Application

- Harmonic rejection
- Transmitters/receivers
- Lab use
- Test instrumentation

### Outline Drawing



### Outline Dimensions (inch mm)

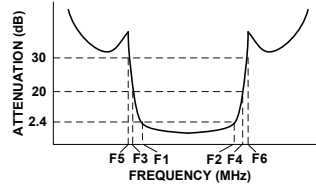
B	D	E	wt.
.410	1.91	.312	grams
10.41	48.51	7.92	11.8

Note: Please refer to case style drawing for details

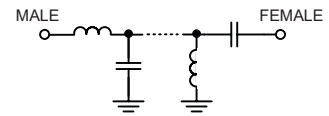
### Bandpass Filter Electrical Specifications (T<sub>AMB</sub> = 25°C)

CENTER FREQ. (MHz) Fc	PASSBAND (MHz) (Loss < 2.4dB)	STOPBANDS (MHz)				VSWR (:1)		
		(Loss > 20dB)		(Loss 30dB Typ)		Passband		Stopband
	F1 - F2	F3	F4	F5	F6	Typ.	Max.	Typ.
925	800 - 1050	530	1550	500	1620 - 18000	1.6	2.3	20

### Typical Frequency Response



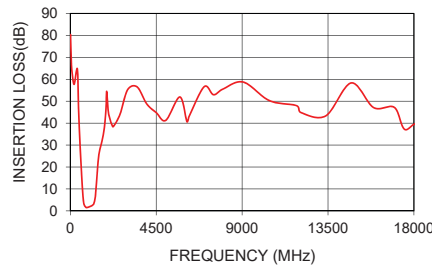
### Functional Schematic



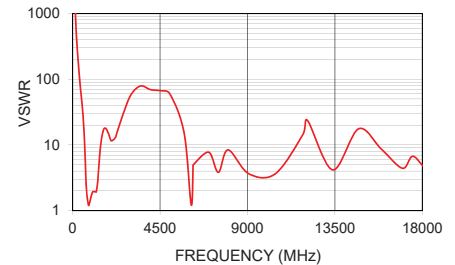
### Typical Performance Data at 25°C

Frequency (MHz)	Insertion Loss (dB)	VSWR (:1)
10	82.20	5351.75
80	64.21	1835.80
250	57.35	237.24
500	31.16	37.91
530	25.79	29.70
595	15.40	15.05
643	8.76	7.03
670	5.89	4.29
702	3.60	2.48
800	1.68	1.22
925	1.64	1.51
1050	2.16	1.95
1275	5.42	2.40
1350	11.88	4.65
1435	21.92	9.23
1550	28.36	15.45
1620	30.79	17.53
3000	54.45	58.52
8000	54.31	8.38
18000	34.91	1.68

VBFZ-925-S+  
INSERTION LOSS



VBFZ-925-S+  
VSWR



### Notes

- Performance and quality attributes and conditions not expressly stated in this specification document are intended to be excluded and do not form a part of this specification document.
- Electrical specifications and performance data contained in this specification document are based on Mini-Circuit's applicable established test performance criteria and measurement instructions.
- The parts covered by this specification document are subject to Mini-Circuits standard limited warranty and terms and conditions (collectively, "Standard Terms"); Purchasers of this part are entitled to the rights and benefits contained therein. For a full statement of the Standard Terms and the exclusive rights and remedies thereunder, please visit Mini-Circuits' website at [www.minicircuits.com/MCLStore/terms.jsp](http://www.minicircuits.com/MCLStore/terms.jsp)



[www.minicircuits.com](http://www.minicircuits.com) P.O. Box 350166, Brooklyn, NY 11235-0003 (718) 934-4500 sales@minicircuits.com

REV. D  
M171494  
EDR-8445U  
VBFZ-925-S+  
URJ/RAV  
200808  
Page 1 of 1