



Electrical Specifications

Center Frequency: 362 MHz
Passband: 349.5-375.5 MHz
Insertion Loss: 3.0 dB Max
Return Loss in Passband: 15 dB Min
Rejection: 50 dB @ 300 MHz
50 dB @ 450 MHz
Power Handling: 10 Watts Max

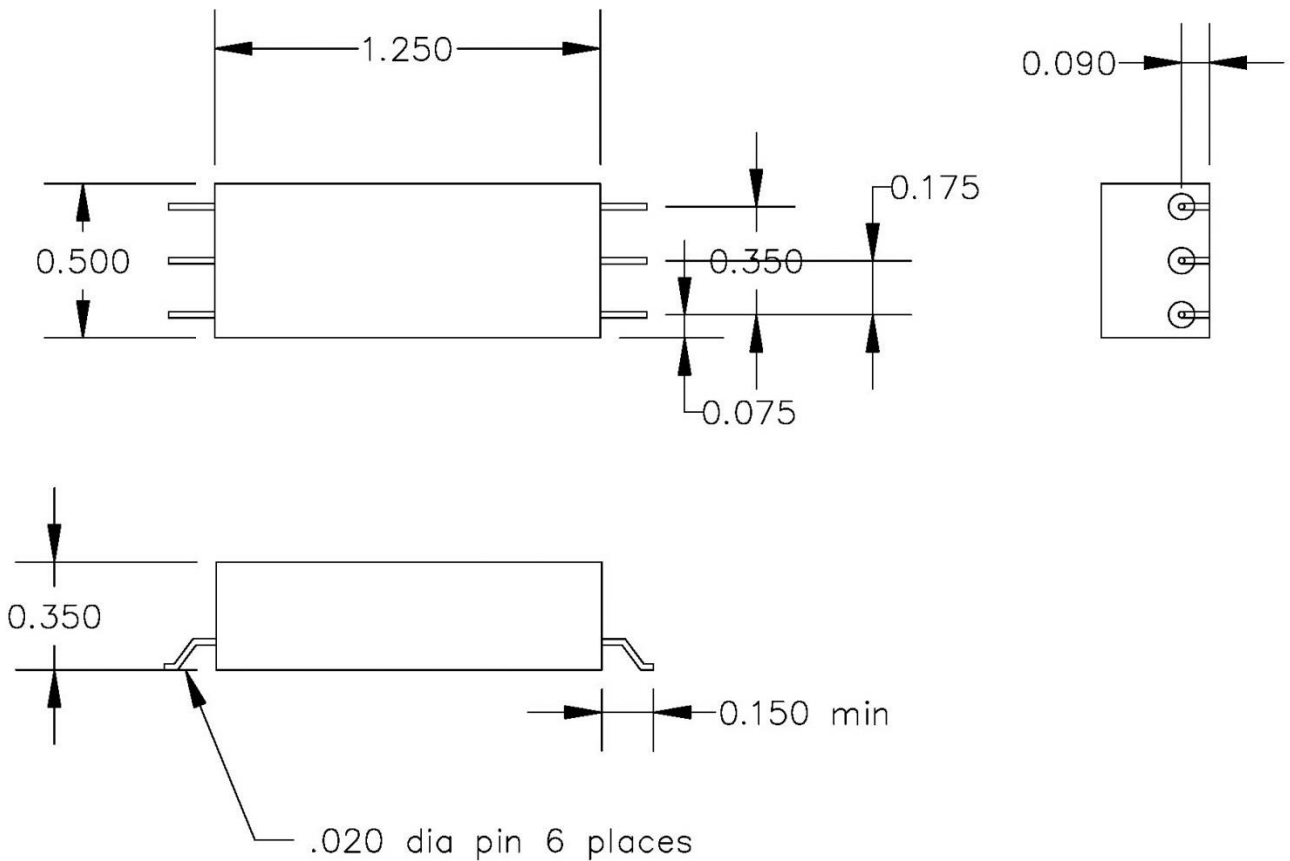
Mechanical

Connector Type: Surface Mount Pins
Dimensions: 1.25 x 0.5 x 0.35 Inches

Environmental

Operating Temperature: -45 to +85° C
Storage Temperature: -65 to +95° C

Outline Drawing:



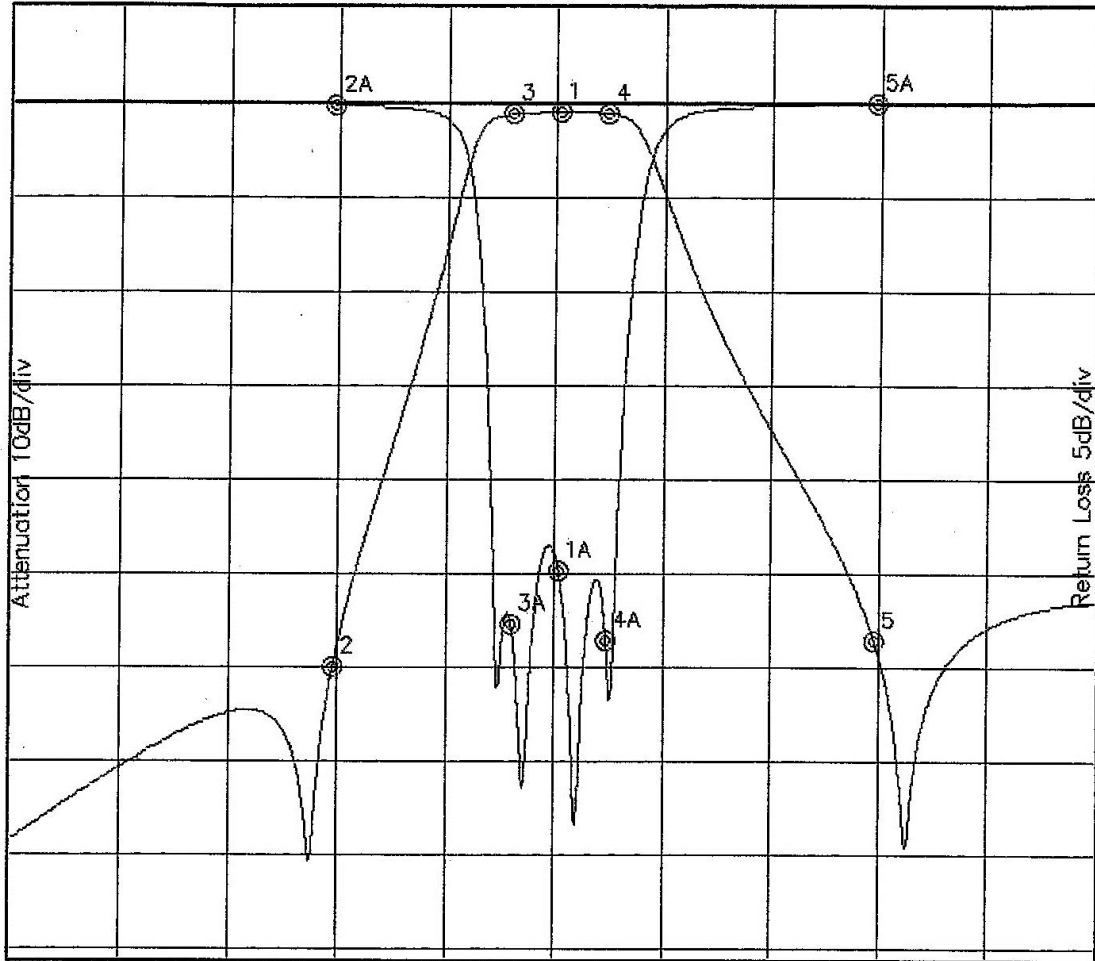


Response Plot:

A214.lad

APR 6, 2011

Attenuation/Return Loss



Attenuation Start: 212.0MHz Stop: 512.0MHz

Return Loss Start: 212.0MHz Stop: 512.0MHz

Marker 1 Freq 362.72MHz Atten -0.929dB
 Marker 2 Freq 300.20MHz Atten -59.836dB
 Marker 3 Freq 349.64MHz Atten -1.140dB
 Marker 4 Freq 375.81MHz Atten -1.037dB
 Marker 5 Freq 450.44MHz Atten -56.942dB

Marker 1A Freq 362.72MHz Ret Loss -24.789dB
 Marker 2A Freq 300.20MHz Ret Loss -0.088dB
 Marker 3A Freq 349.64MHz Ret Loss -27.643dB
 Marker 4A Freq 375.81MHz Ret Loss -28.485dB
 Marker 5A Freq 450.44MHz Ret Loss 0.000dB