

# High Pass Filter

## RHP-44+

50Ω 95 to 2400 MHz

### Maximum Ratings

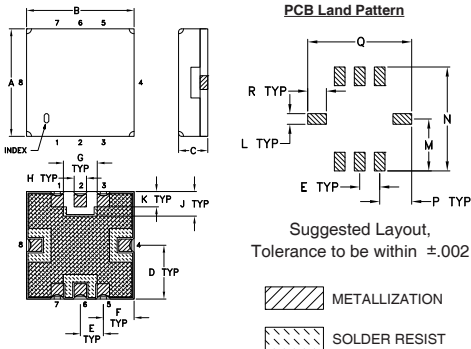
Operating Temperature	-40°C to 85°C
Storage Temperature	-55°C to 100°C
RF Power Input	0.5W at 25°C

Permanent damage may occur if any of these limits are exceeded.

### Pin Connections

INPUT	2
OUTPUT	6
GROUND	1, 3, 4, 5, 7, 8

### Outline Drawing

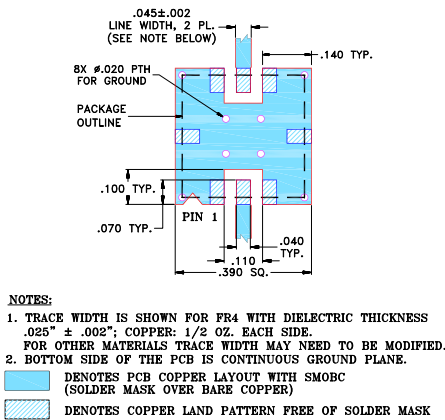


### Outline Dimensions (inch/mm)

A	B	C	D	E	F	G	H	J
.350	.350	.100	.175	.075	.100	.110	.040	.080
8.89	8.89	2.54	4.45	1.91	2.54	2.79	1.02	2.03
K	L	M	N	P	Q	R	wt.	
.050	.040	.195	.390	.120	.390	.070	grams	
1.27	1.02	4.95	9.91	3.05	9.91	1.78		0.25

Note: Please refer to case style drawing for details

### Demo Board MCL P/N: TB-332 Suggested PCB Layout (PL-176)



### Features

- low insertion loss, 0.3dB typ. @ passband
- high rejection
- shielded case
- aqueous washable

### Applications

- transmitters / receivers
- sub-harmonic rejection
- military communications



Generic photo used for illustration purposes only  
CASE STYLE: GP731

**+RoHS Compliant**

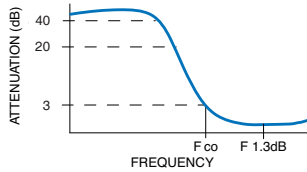
The +Suffix identifies RoHS Compliance. See our web site for RoHS Compliance methodologies and qualifications

Available Tape and Reel at no extra cost	
Reel Size	Devices/Reel
7"	10, 20, 50, 100, 200
13"	500, 1000

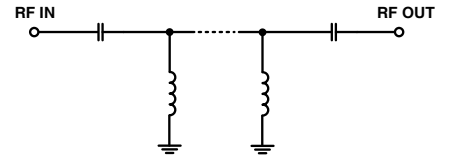
### High Pass Filter Electrical Specifications (T<sub>AMB</sub> = 25°C)

STOPBAND (MHz)	f <sub>co</sub> , MHz Nom.	PASSBAND (MHz)	VSWR (:1)
(Loss > 40dB)	(Loss > 20dB)	(Loss < 3dB)	Stopband Typ. Passband Typ.
DC - 25	DC - 32	44	18 1.2

### Typical Frequency Response

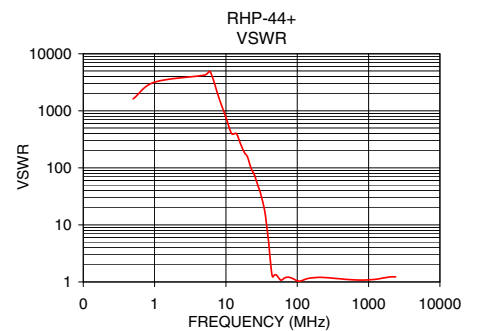
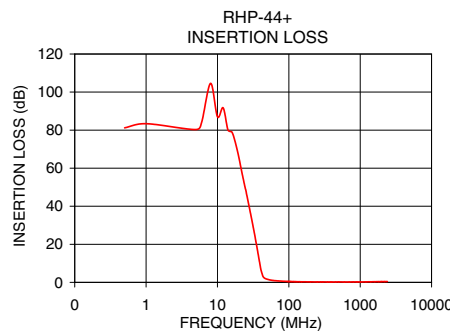


### Functional Schematic



### Typical Performance Data at 25°C

Frequency (MHz)	Insertion Loss (dB)	VSWR (:1)
0.5	81.20	1622.17
20.0	65.37	156.73
25.0	48.35	74.66
32.0	28.28	28.60
44.0	2.82	1.38
80.0	0.63	1.19
95.0	0.49	1.08
100.0	0.45	1.05
120.0	0.37	1.07
150.0	0.31	1.17
200.0	0.26	1.20
300.0	0.21	1.17
400.0	0.19	1.13
500.0	0.20	1.11
1000.0	0.23	1.09
1600.0	0.33	1.17
2000.0	0.39	1.22
2400.0	0.43	1.23



### Notes

- Performance and quality attributes and conditions not expressly stated in this specification document are intended to be excluded and do not form a part of this specification document.
- Electrical specifications and performance data contained in this specification document are based on Mini-Circuits' applicable established test performance criteria and measurement instructions.
- The parts covered by this specification document are subject to Mini-Circuits standard limited warranty and terms and conditions (collectively, "Standard Terms"); Purchasers of this part are entitled to the rights and benefits contained therein. For a full statement of the Standard Terms and the exclusive rights and remedies thereunder, please visit Mini-Circuits' website at [www.minicircuits.com/MCLStore/terms.jsp](http://www.minicircuits.com/MCLStore/terms.jsp)

