



ANATECH ELECTRONICS INC
RF & Microwave Filters & Products

1300 MHz Bandpass Filter

Part Number: AE1300B6365



Electrical Specifications

Center Frequency: 1300 MHz
Bandwidth: 100 MHz
Impedance: 50 Ohms
Rejection: 60dB @ 0- 900 MHz
Rejection: 60dB @1650-5000 MHz
Insertion loss: <3dB

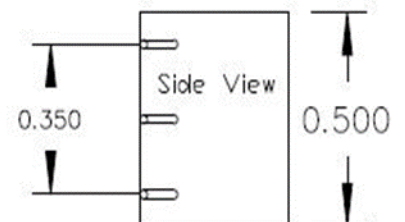
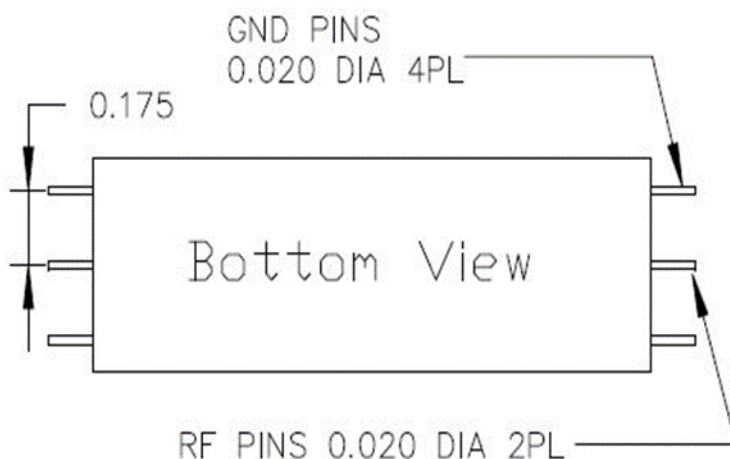
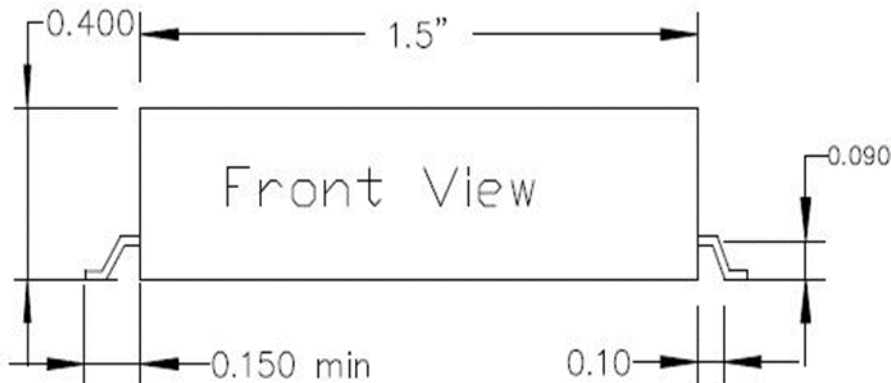
Mechanical

Connector Type: Surface Mount
Dimensions: 1.5" X 0.5" x 0.4" in.

Environmental

Operating Temperature: -25°C to +70°C
Storage Temperature: -40°C to +90°C
Shock: 10 G. 11ms
Vibration: 10 G. 5 to 200Hz

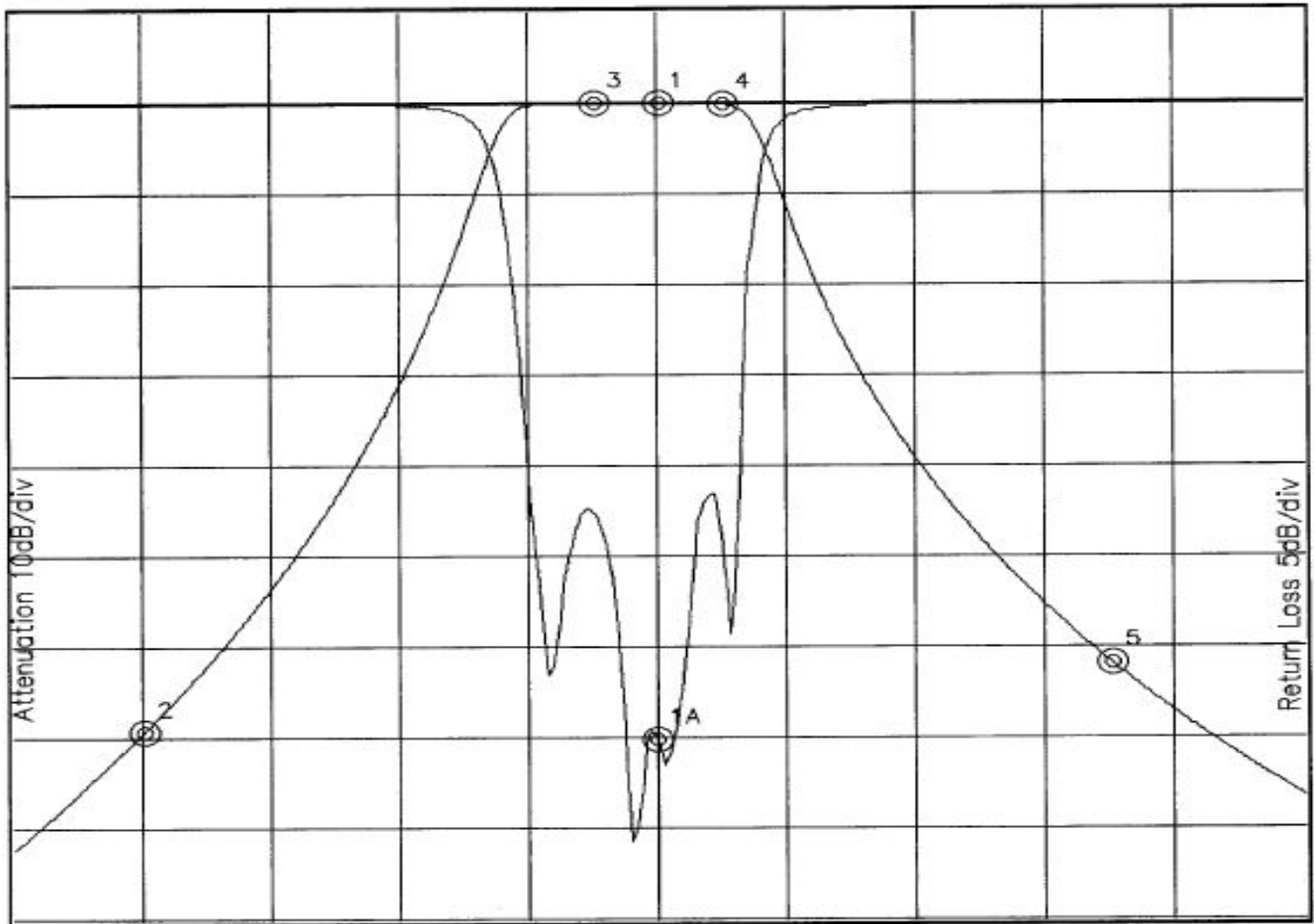
Outline Drawing:





Response Plot:

B6365.lad AUG 9, 2002 Attenuation/Return Loss



Attenuation Start: 800.0MHz Stop: 1.80GHz

Return Loss Start: 800.0MHz Stop: 1.80GHz

Offset -0.6521dB

- Marker 1 Freq 1.301GHz Atten -0.044dB
- Marker 2 Freq 900.16MHz Atten -69.737dB
- Marker 3 Freq 1.251GHz Atten -0.073dB
- Marker 4 Freq 1.351GHz Atten -0.296dB
- Marker 5 Freq 1.651GHz Atten -62.222dB

Marker 1A Freq 1.299GHz Ret Loss -35.367dB