



### Electrical specifications

**Center Frequency:** 3413.5 MHz  
**Passband bandwidth:** 10 MHz  
**Insertion loss over PB:** 3.0 dB@3408.5-3418.5 MHz  
**Return loss:** 16 dB@3408.5-3418.5 MHz  
**IL Variation:** 3.0 dB over PB  
**Rejection 1:** 60 dBc min@DC(CF-20) MHz,  
**Rejection 2:** 60 dBc min@(CF+20)MHz- 6200 MHz  
**Group delay variation:** 50 ns over any 0.5 MHz in PB  
**Power:** 1 Watt

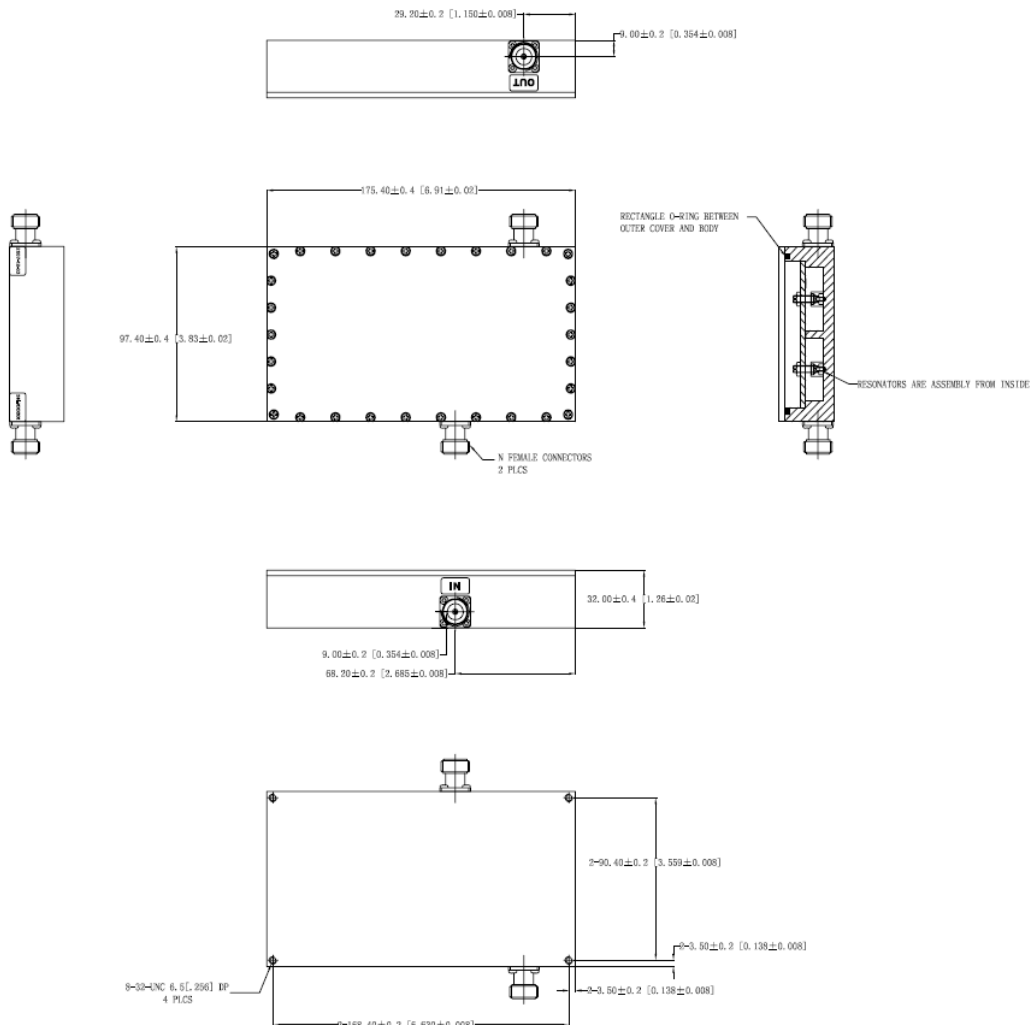
### Mechanical

**Mounting Method:** Threaded Mounting Holes  
**Connector Type:** N-Type female  
**Dimensions:** 6.93" x 3.86" x 1.28" in

### Environmental

**Operating Temperature:** -45 to +85° C  
**Storage Temperature:** -55 to +95° C  
**Shock:** 20 G. 11ms  
**Vibration:** 20 G. 5 to 200 MHz

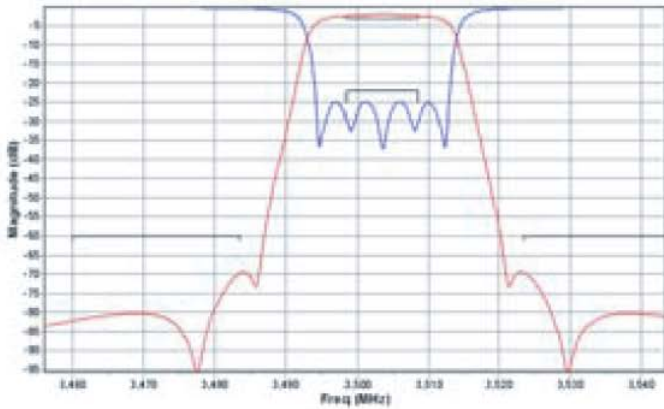
### Outline Drawing:



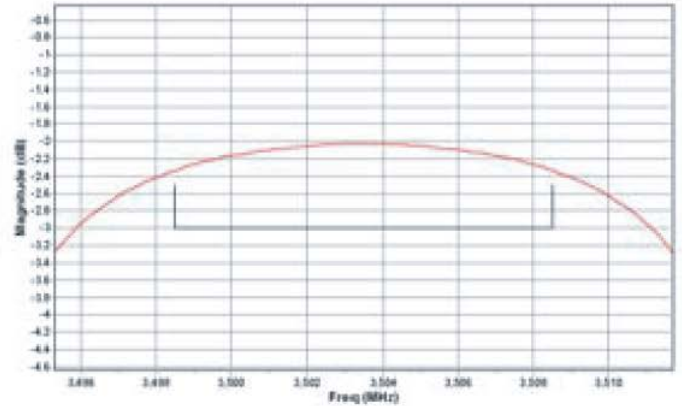


### Plot:

#### Rejection & Return Loss



#### Insertion loss



#### Group Delay

