



Electrical specifications

Center Frequency: 2533 MHz
Bandwidth: (-3 dB): 73 MHz
Input / Output Impedance: 50 Ohm
Passband: 2496.5-2569.5 MHz
Passband Insertion Loss: <1.1dB(0.9dB typical)
Passband Ripple: <0.2 dB
Passband Return Loss: 15dB (-18dB typical)
Selectivity: 30dB BW: <106MHz (Fc +/- 53MHz)
 60 dB BW: >150MHz (Fc+/- 75MHz)
Harmonic Rejection: >80 dB (90 dB typical)
Power Handling: 50 Watts

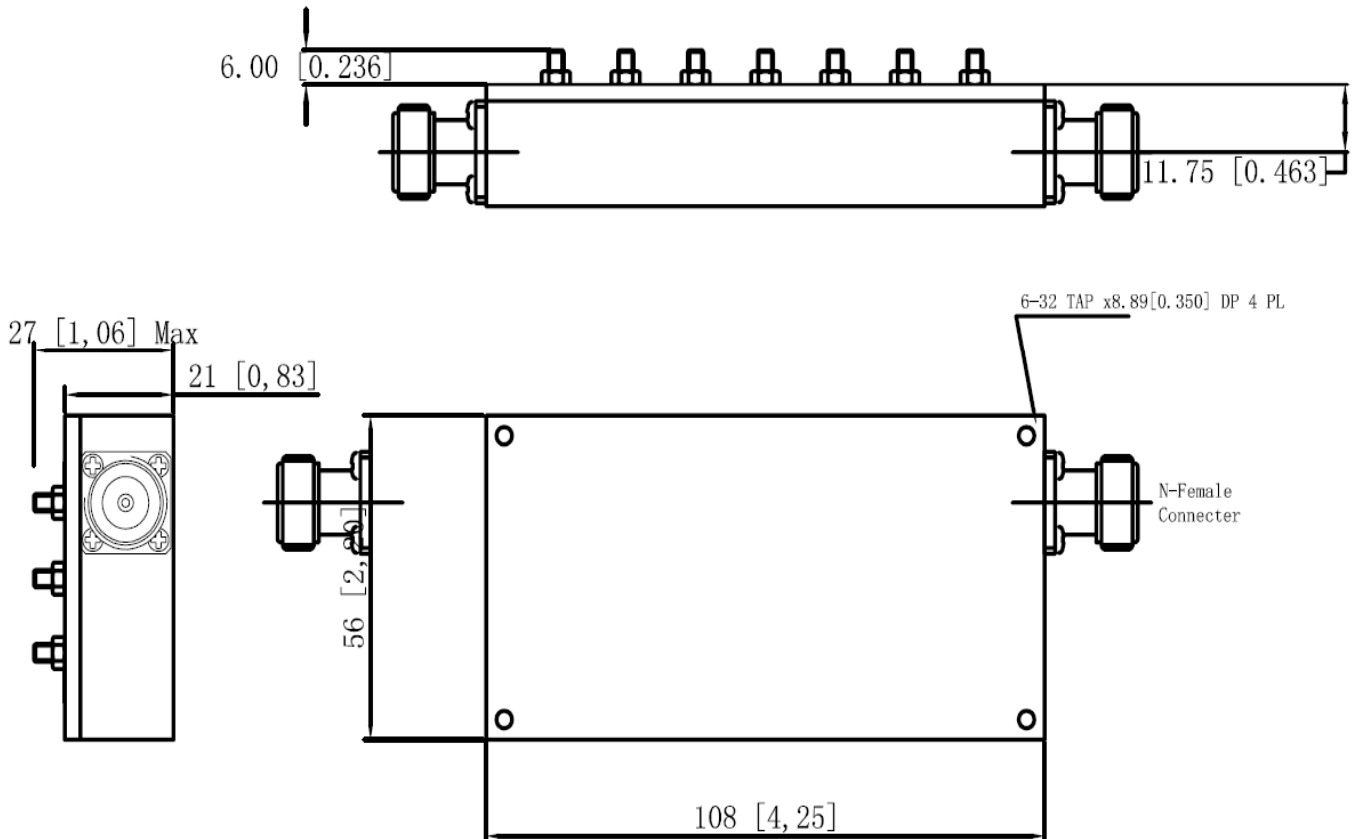
Mechanical

Mounting Method: Threaded Mounting Holes
Connector Type: 2 N-Type Female
Dimensions: 4.3" x 2.2" x 0.8"

Environmental

Operating Temperature: -40° C to +85° C
Storage Temperature: -55° C to +95° C
Shock: 20 G. 11ms
Vibration: 20 G. 5 to 200 MHz

Outline Drawing:





ANATECH ELECTRONICS INC
RF & Microwave Filters & Products

WiFi Bandpass Filter

Part Number: AB2533B594



Response Plot:

