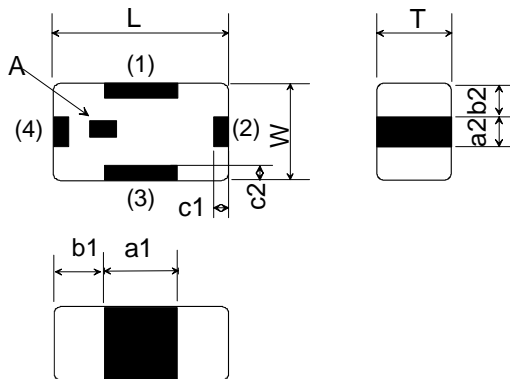


## BAND PASS FILTER

### 1. Characteristics ( at $-40 \sim +85 \text{ }^{\circ}\text{C}$ )

Part Number	LFB182G45SG9B740
Nominal Center Frequency	2450.00 MHz
Pass Band Range (BW)	$f_0 \pm 50.00 \text{ MHz}$
Insertion Loss in BW	1.80 dB max. at $25 \text{ }^{\circ}\text{C}$ 2.10 dB max. at $-40 \sim +85 \text{ }^{\circ}\text{C}$
Attenuation (Absolute value)	27.0 dB min. at 800.00 ~ 900.00MHz 34.0 dB min. at 4800.00 ~ 5000.00MHz 34.0 dB min. at 7200.00 ~ 7500.00MHz
Ripple	0.70 dB max.
V.S.W.R. in BW	2.00 max.
Power Capacity	500 mW max.

### 2. Construction,Dimensions&Marking



(in mm)

Mark	Meaning
A	Directional Input Mark

Mark	Dimension	Mark	Dimension
L	$1.6 \pm 0.1$	b1	$0.45 \pm 0.15$
W	$0.8 + 0.2 / -0.1$	b2	$0.25 \pm 0.15$
T	$0.6 \pm 0.1$	c1	$0.20 \pm 0.15$
a1	$0.70 \pm 0.15$	c2	$0.20 \pm 0.15$
a2	$0.30 + 0.10 / -0.15$	-	-

#### TERMINAL CONFIGURATION

Terminal No.	Terminal Name	Terminal No.	Terminal Name
(1)	GND	(3)	GND
(2)	OUT	(4)	IN

### 3. Land Pattern

