



Electrical specifications

Center Frequency: 5775 MHz
Bandwidth: 10 MHz
Input / Output Impedance: 50 Ohms
Passband: 5770-5780 MHz
Passband Insertion Loss: 1.75 dB @ 5770-5780 MHz
Passband Ripple: <0.2 dB
Passband Return Loss: >14 dB
Rejection: DC-(CF-20)MHz 40 dBc
Rejection 2: (CF+20)MHz -6200 MHz 40 dBc
Power Handling: 40 W
Group Delay Variation: 200ns over any 0.5 MHz

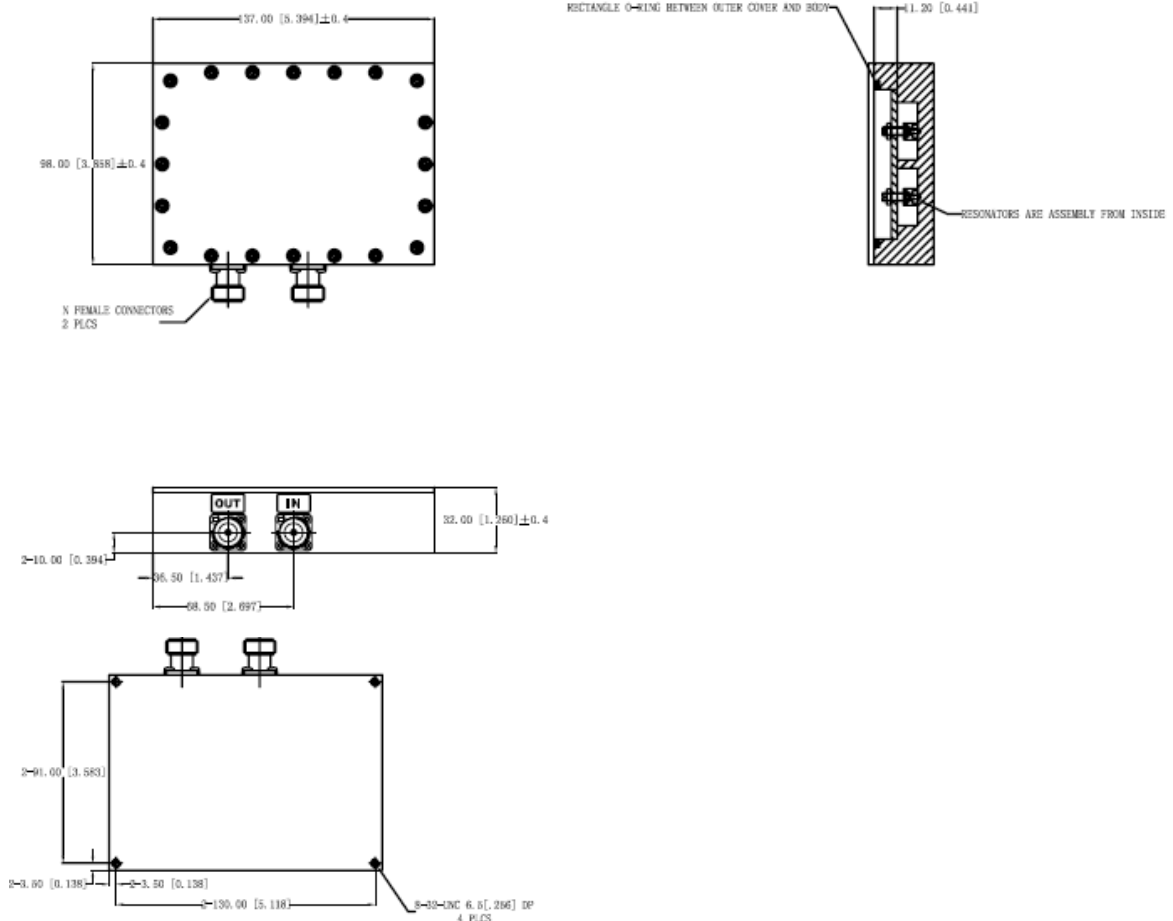
Mechanical

Mounting Method: Threaded Mounting Holes
Connector Type: N-Type (F) and N-Type (M)
Dimensions: 5.40" x 3.86" 1.26"
 (137mm x 98mm x 32mm)

Environmental

Operating Temperature: -30 to +60 deg.C
Storage Temperature: -55 to +95 deg.C
Shock: 20 G. 11ms
Vibration: 20 G. 5 to 200 MHz

Outline Drawing:





ANATECH ELECTRONICS INC
RF & Microwave Filters & Products

5775 MHz WIFI Cavity Filter

Part Number: AB5775B771



Response Plot:

