



**Electrical specifications**

**Center Frequency:** 913 MHz  
**Bandwidth:** 20 MHz  
**Input / Output Impedance:** 50 Ohms  
**Passband:** 903-923 MHz  
**Passband Insertion Loss:** 1.6dB MAX  
**Passband Ripple:** 1dB MAX  
**Passband Return Loss:** 15dB (18dB typical)  
**Rejection:** 40dB@ 895 MHz  
**Rejection 2:** 40dB@ 931 MHz  
**Power Handling:** 30 Watts

**Mechanical**

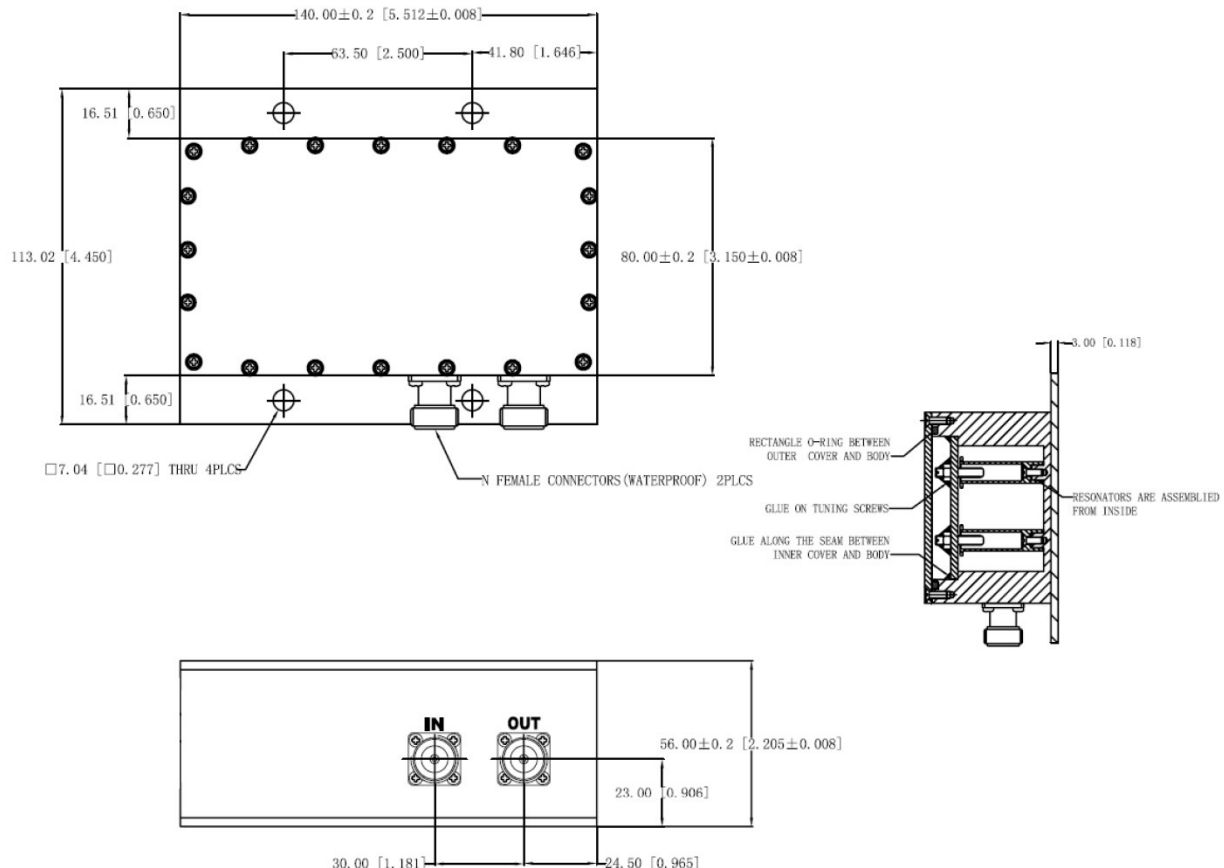
**Mounting Method:** Threaded Mounting Holes  
**Connector Type:** N-Type Female  
**Dimensions:** 140 x 113 x 80 mm.

**Environmental**

**Operating Temperature:** -40 to +85 Deg C  
**Storage Temperature:** -55 to +95 deg.C  
**Shock:** 20 G. 11ms  
**Vibration:** 20 G. 5 to 200 MHz



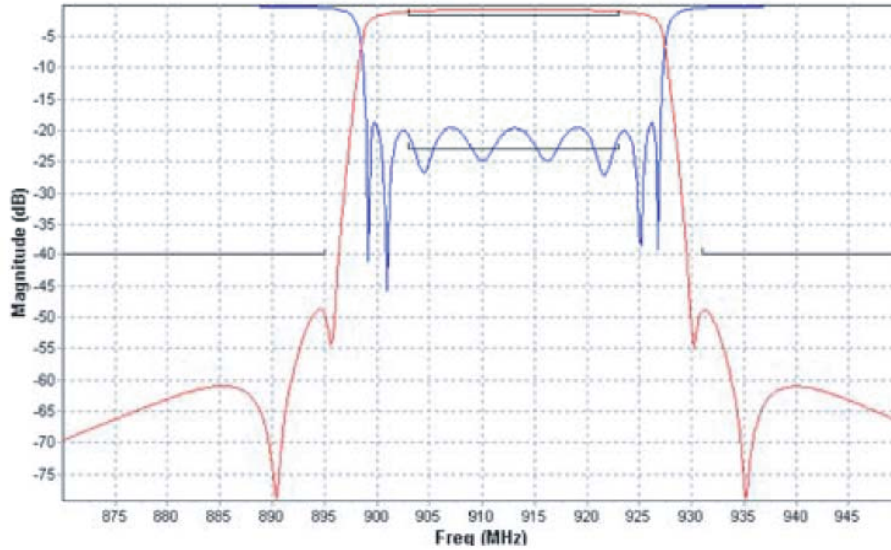
**Outline Drawing:**





**Response Plot:**

Rejection



Insertion Loss

