



Electrical specifications

Center Frequency: 36.16 MHz
Bandwidth: 1.8 MHz
Passband: 35.26-37.06 MHz
Insertion Loss: 5.0 dB Max
Return Loss: 14 dB Min
Rejection: >50 dB @ 0-39.16 MHz
 >50 dB @ 39.16-200 MHz

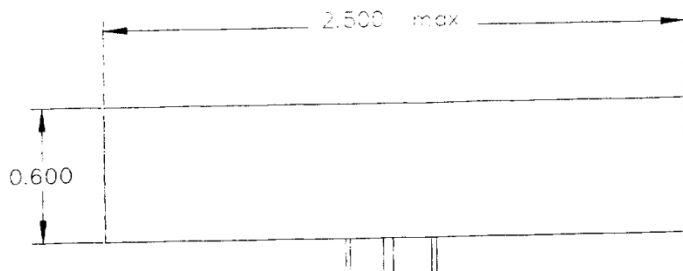
Mechanical

Dimensions: 2.5 x 1.0 x 0.6 inches

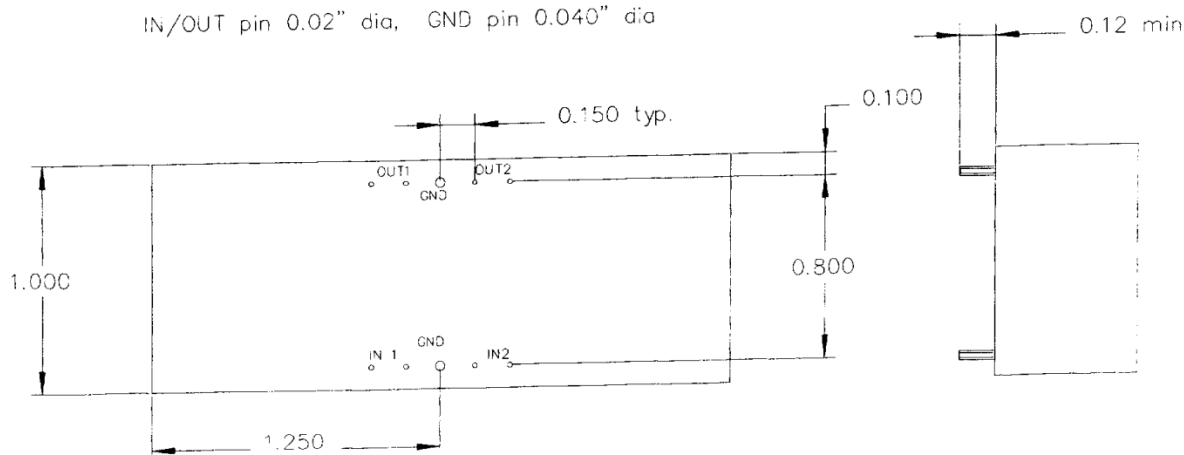
Environmental

Operating Temperature: -40 to +70° C

Outline Drawing:



IN/OUT pin 0.02" dia, GND pin 0.040" dia



DWG 987124 ajs 6/25/03

Outline Drawing

Anatech Electronics, Inc.