



ANATECH ELECTRONICS INC
RF & Microwave Filters & Products

668 MHz LC Bandpass Filter

Part Number: AE668B6380



Electrical Specifications

Center Frequency: 668 MHz
Bandwidth : 48 MHz
Passband: 639 MHz to 697 MHz
Insertion Loss: <3.3 dB
Impedance: 50 Ohms
Rejection1: >10 dB at 609 & 720 MHz
Rejection2: >50 dB at 522 & 800 MHz
Rejection3: >80 dB at 348 & 960 MHz

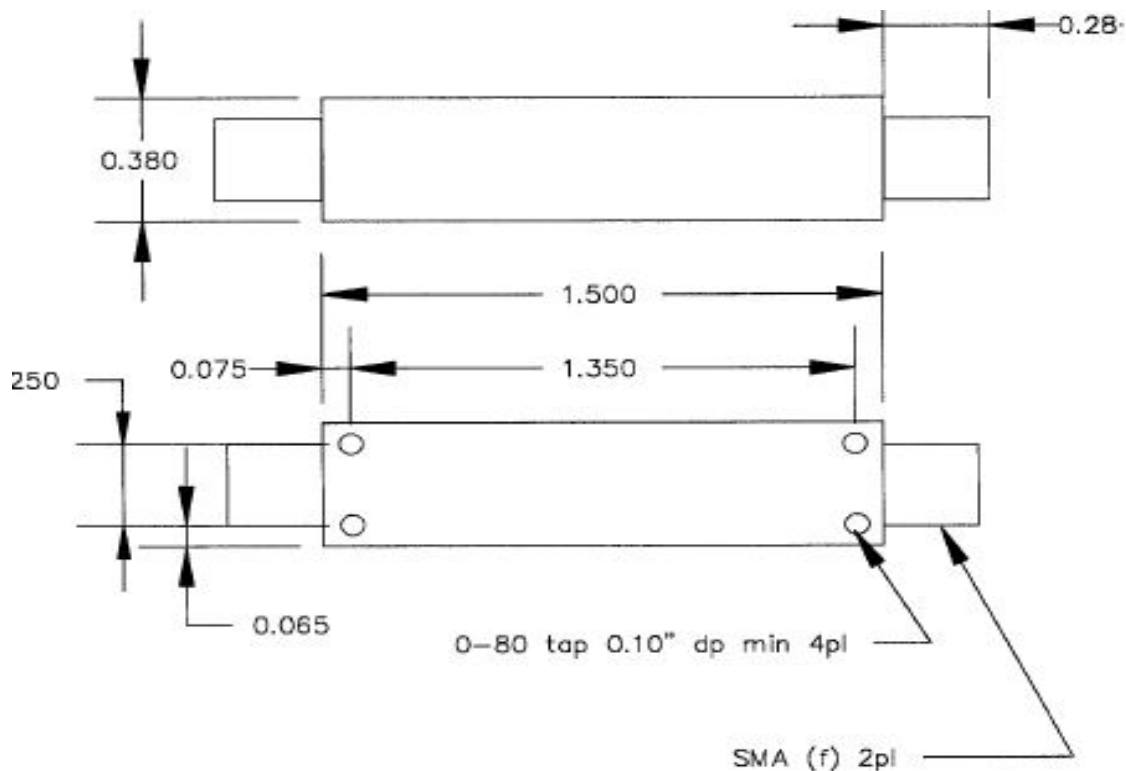
Mechanical

Connector Type: SMA(Female)
Dimensions: 1.5" X 0.38" x 0.38" in.

Environmental

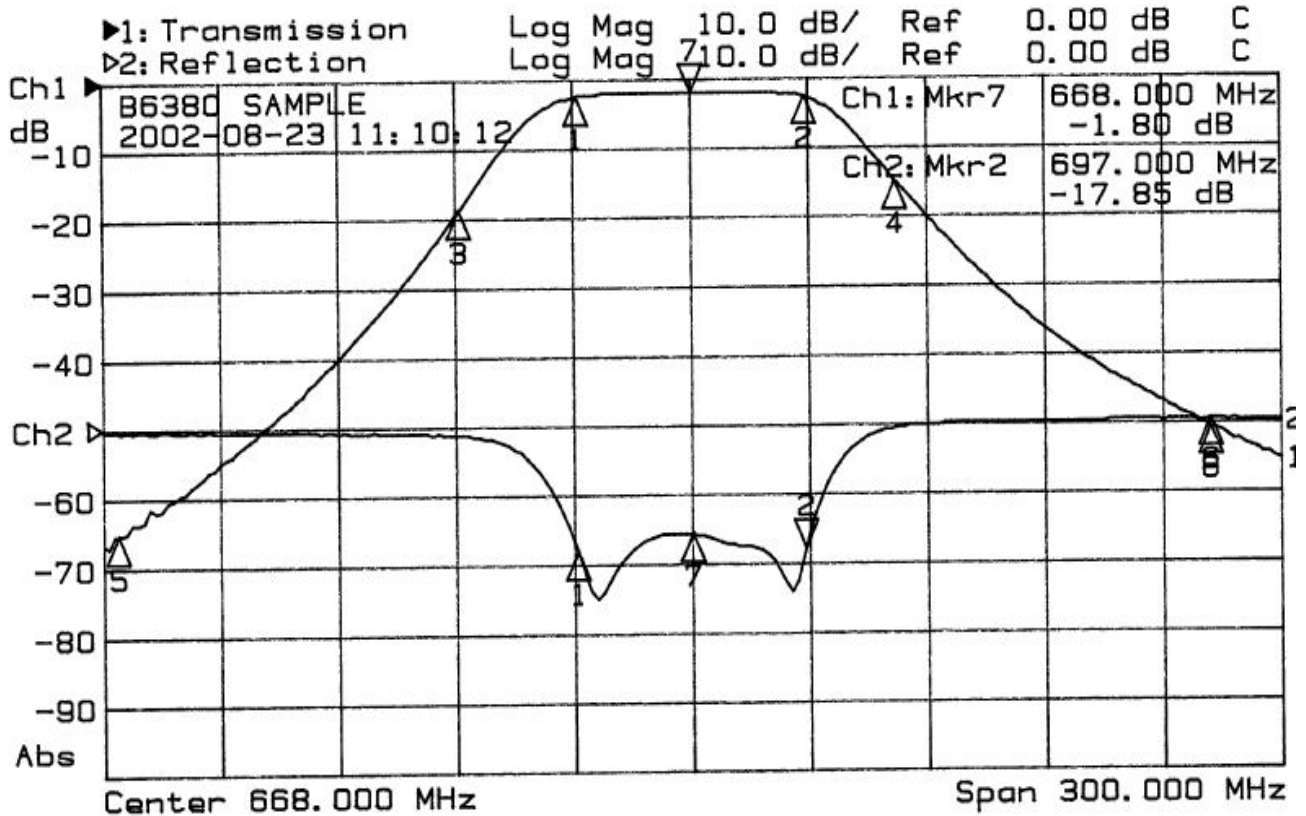
Operating Temperature: -25°C to +70°C
Storage Temperature: -40°C to +90°C
Shock: 10 G. 11ms
Vibration: 10 G. 5 to 200Hz

Outline Drawing:





Response Plot:



1: Mkr (MHz)	dB	2: Mkr (MHz)	dB
1: 639.00	-2.41	1: 639.00	-18.27
2: 697.00	-2.60	2> 697.00	-17.85
3: 609.00	-18.66		
4: 720.00	-14.96		
5: 522.00	-65.37		
6: 800.00	-50.49	6: 800.00	0.52
7> 668.00	-1.80	7: 668.00	-15.71