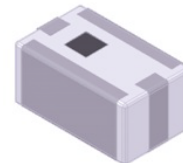


# SMD 2.45GHz Dielectric Band Pass Filter



1.6 x 0.8 x 0.60 mm

ADFC18-2450.00-A-T



**RoHS**  
Compliant

## FEATURES:

- Small and low profile enables high density mounting
- Low insertion loss & attenuation
- Internally shielded for enhanced performance
- Excellent solderability

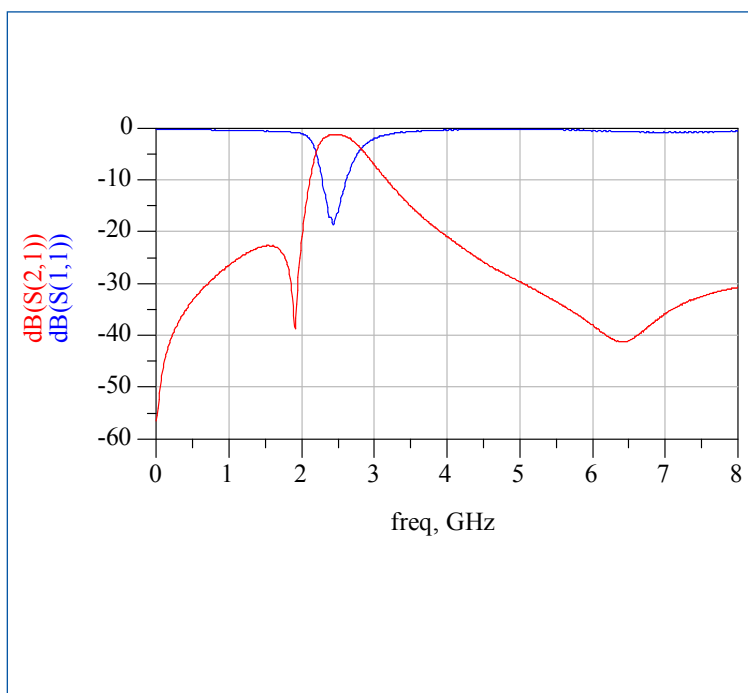
## APPLICATIONS:

- Mobile communication system
- Bluetooth, Wireless LAN, WIFI, GPS, etc.

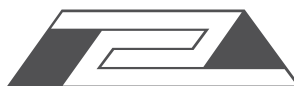
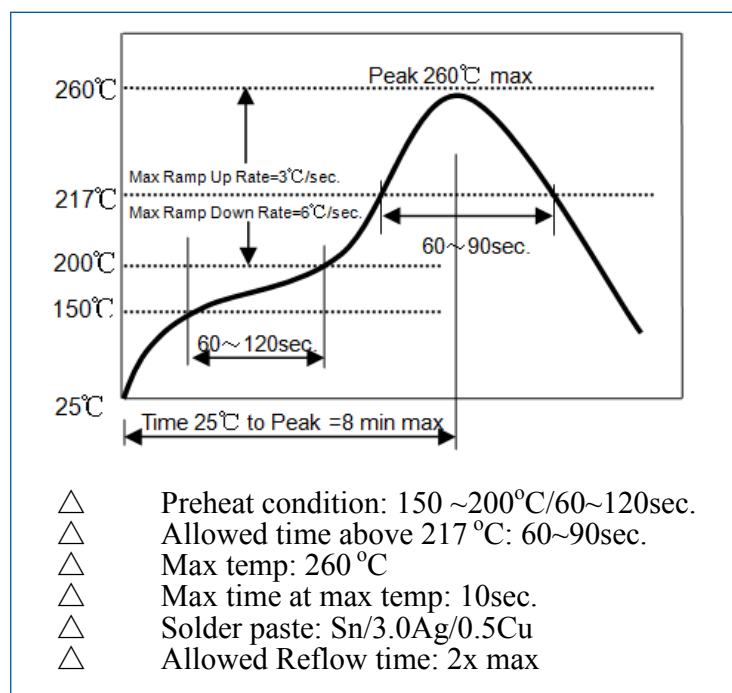
## STANDARD SPECIFICATIONS:

| Parameters                                  | Minimum | Typical | Maximum | Units    | Notes          |
|---|---------|---------|---------|----------|----------------|
| Center Frequency ( $f_0$ )                  |         | 2450.00 |         | MHz      |                |
| Passband width                              | 2400.00 |         | 2500.00 | MHz      |                |
| Insertion Loss (2400 ~ 2500MHz)             |         |         | 1.6     | dB       | @+25°C         |
|   |         |         | 1.8     | dB       | @ -40 ~ +85°C  |
| Amplitude Ripple (2400 ~ 2500MHz)           |         |         | 0.5     | dB       |                |
| V.S.W.R (2400 ~ 2500MHz)                    |         |         | 1.5     |          |                |
| Relative Attenuation (Reference level: 0dB) | 24      |         |         | dB       | 800 ~ 960MHz   |
|   | 20      |         |         |          | 1710 ~ 1990MHz |
|   | 25      |         |         |          | 4800 ~ 5000MHz |
|   | 25      |         |         |          | 7200 ~ 7500MHz |
| Characteristic Impedance                    |         | 50      |         | $\Omega$ |                |
| Operation Temperature Range                 | -40     |         | +85     | °C       |                |
| Storage Temperature Range                   | -10     |         | +40     | °C       | RH 70% Max     |

## CHARACTERISTIC CURVE:



## REFLOW PROFILE:

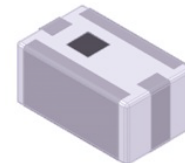


# SMD 2.45GHz Dielectric Band Pass Filter

ADFC18-2450.00-A-T

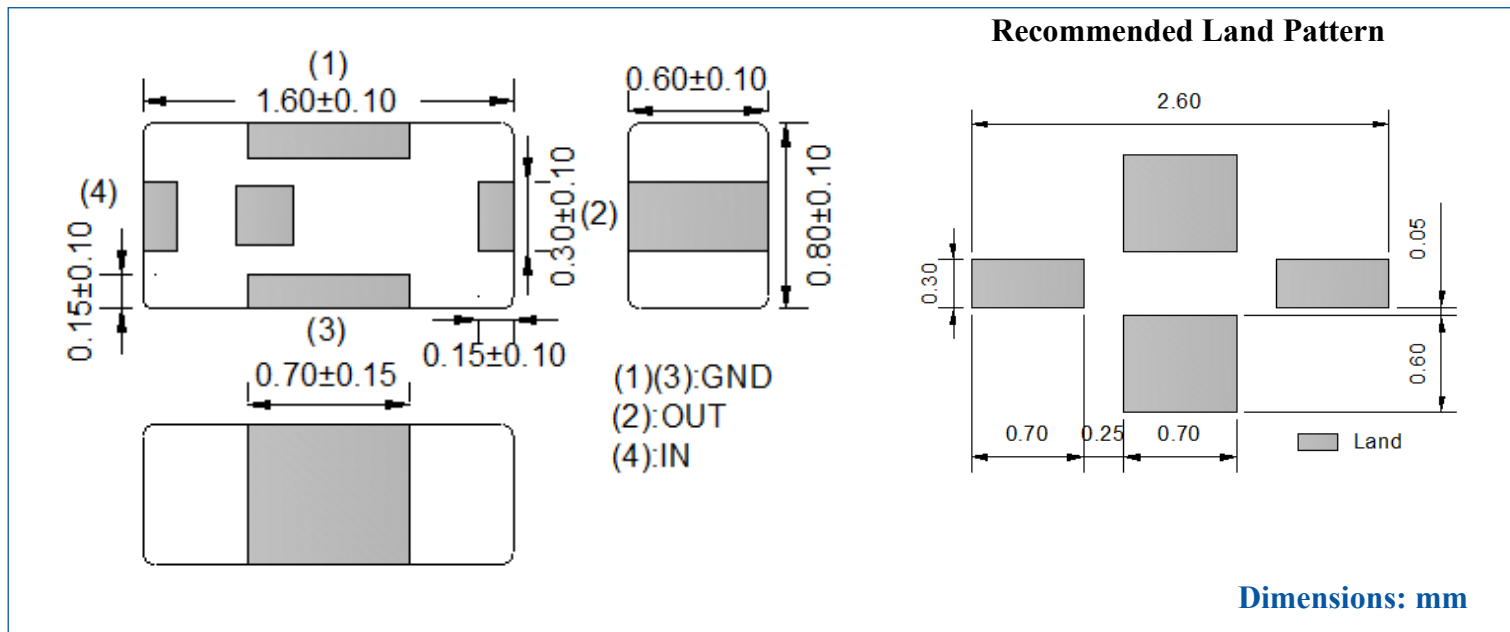


RoHS  
Compliant



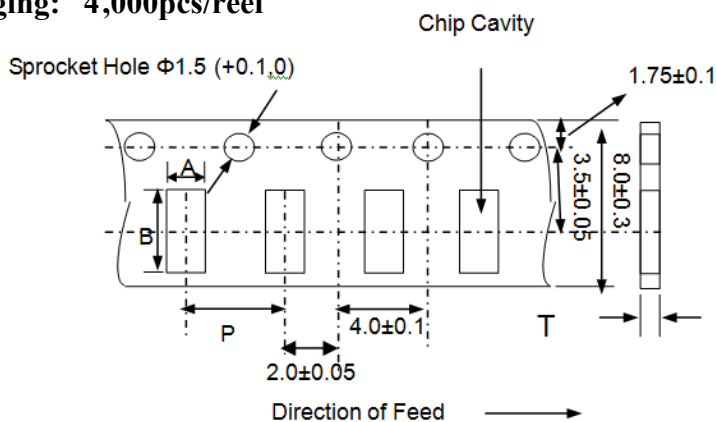
1.6 x 0.8 x 0.60 mm

## OUTLINE DRAWING:

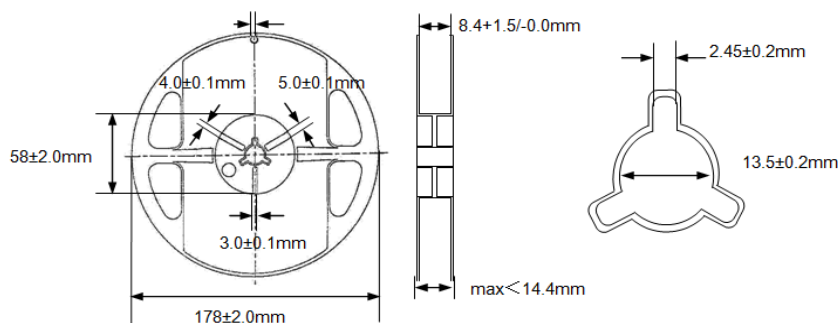


## TAPE & REEL:

Packaging: 4,000pcs/reel



| A         | B         | P        | T max |
|-----------|-----------|----------|-------|
| 1.00±0.10 | 1.80±0.10 | 4.0±0.10 | 0.75  |



Dimensions: mm

**ATTENTION:** Abracon Corporation's products are COTS – Commercial-Off-The-Shelf products; suitable for Commercial, Industrial and, where designated, Automotive Applications. Abracon's products are not specifically designed for Military, Aviation, Aerospace, Life-dependant Medical applications or any application requiring high reliability where component failure could result in loss of life and/or property. For applications requiring high reliability and/or presenting an extreme operating environment, written consent and authorization from Abracon Corporation is required. Please contact Abracon Corporation for more information.

ABRACON IS  
ISO 9001:2008  
CERTIFIED



**ABRACON**  
CORPORATION

Visit [www.abracon.com](http://www.abracon.com) for Terms & Conditions of Sale  
30332 Esperanza, Rancho Santa Margarita, California 92688  
tel 949-546-8000 | fax 949-546-8001 | [www.abracon.com](http://www.abracon.com)

Revised: 12.03.12