



1912 MHz Cavity Bandpass Filter

Part Number: AB1912B714



ANATECH ELECTRONICS INC
RF & Microwave Filters & Products

Electrical specifications

Operating bandwidth: 1865~1960 MHz

Insertion loss: =/ $<$ 1.0 dB

Return loss: =/ $>$ 18 dB

Rejection: $>$ 21 dB@DC~1835 MHz

Impedance: 50 Ohms In/Out

Average power handling: =/ $<$ 40 Watts

Peak power handling: =/ $<$ 1.4 KW

IMD3@1770MHz: 100 dBm@2x43 dBm

IMD3@1675MHz: 110 dBm@2x43 dBm

Mechanical

Mounting Method: Threaded Mounting Holes

Connector Type: 7/16 (F/M)

Dimensions: 6.77" x 5.00" x 1.73" in

Environmental

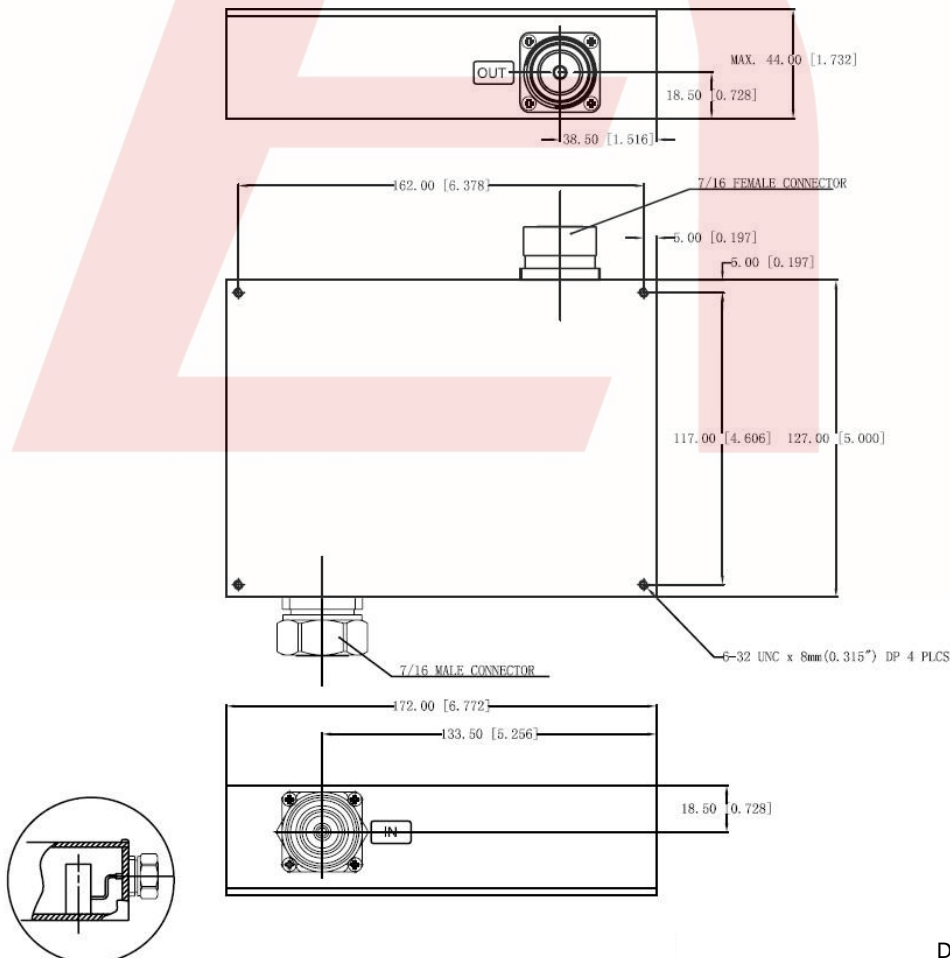
Operating Temperature: -45 to +85° C

Storage Temperature: -55 to +95° C

Shock: 20 G. 11ms

Vibration: 20 G. 5 to 200 Hz

Outline Drawing:



DS-B7141-01072022-Rev0



1912 MHz Cavity Bandpass Filter

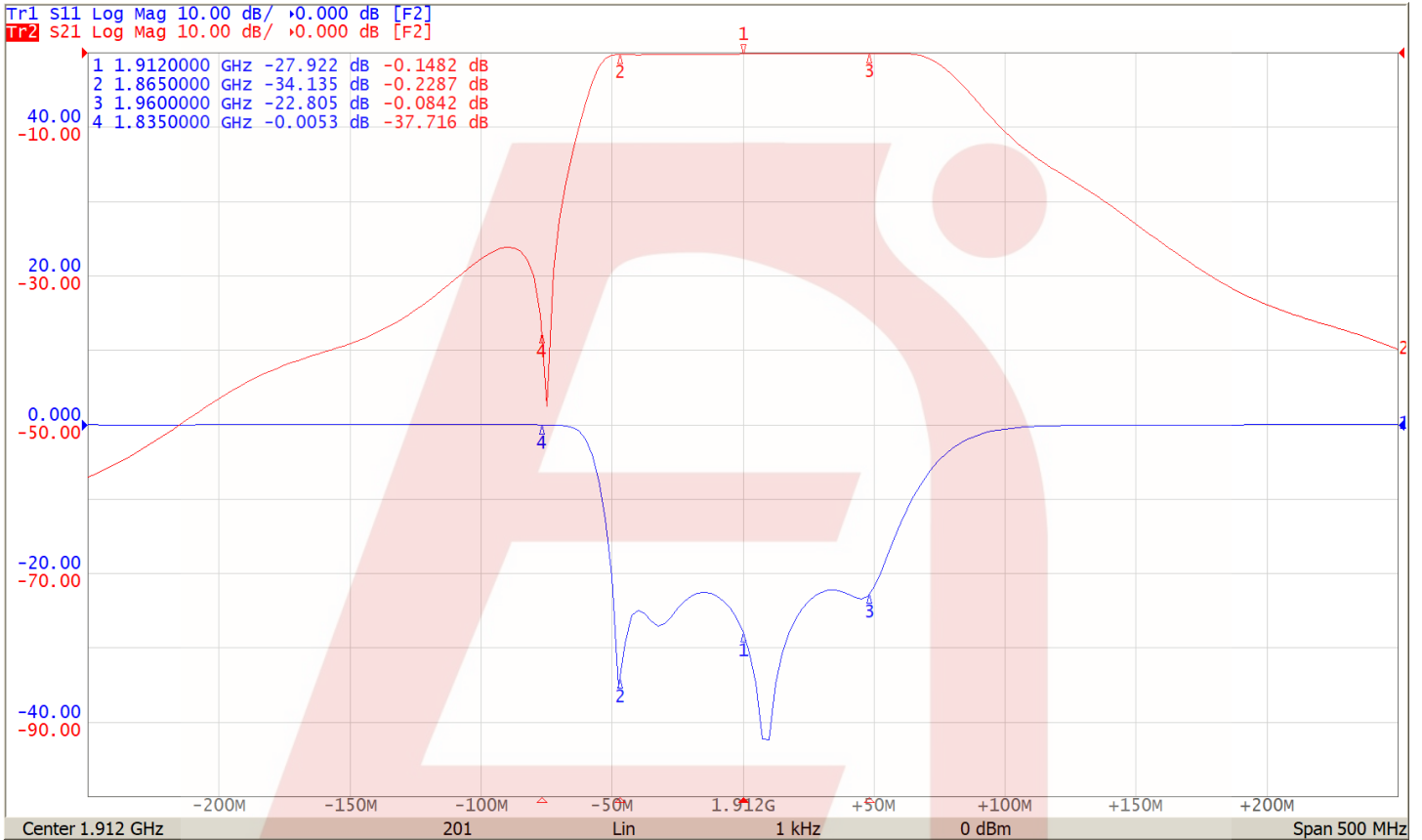
Part Number: AB1912B714

ANATECH ELECTRONICS INC
RF & Microwave Filters & Products



Plot:

5/20/2021 10:41:10 AM



DS-B7141-01072022-Rev0