



Electrical specifications

Center Frequency: 5495 MHz
Passband bandwidth: 20 MHz
Insertion loss over PB: 1.75 dB max over PB
IL Variation: 0.75 over PB
Rejection 1: 20 dBc min@DC-(CF-20) MHz
Rejection 2: 20 dBc min@(CF+20)MHz-6200 MHz
Group delay variation: 4 ns over any 0.5 MHz in PB
Power: 1 Watt

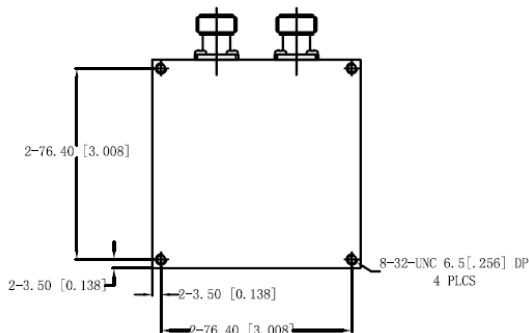
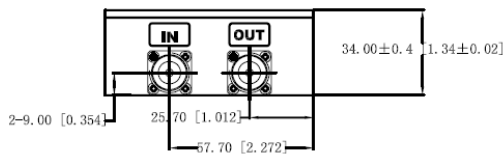
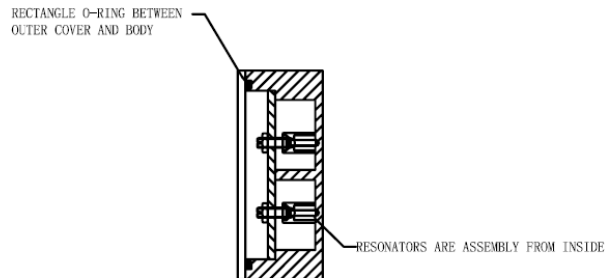
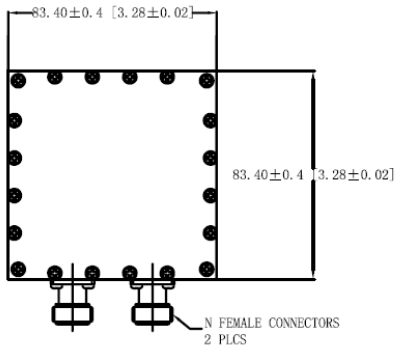
Mechanical

Mounting Method: Threaded Mounting Holes
Connector Type: N-Type female,
Dimensions: 3.28" x 3.28" x 1.34" in

Environmental

Operating Temperature: -45 to +85° C
Storage Temperature: -55 to +95° C
Shock: 20 G. 11ms
Vibration: 20 G. 5 to 200 MHz

Outline Drawing:





ANATECH ELECTRONICS INC
RF & Microwave Filters & Products

5495 MHz WiFi Cavity Filter

Part Number: AB5495B1045



Plot:

