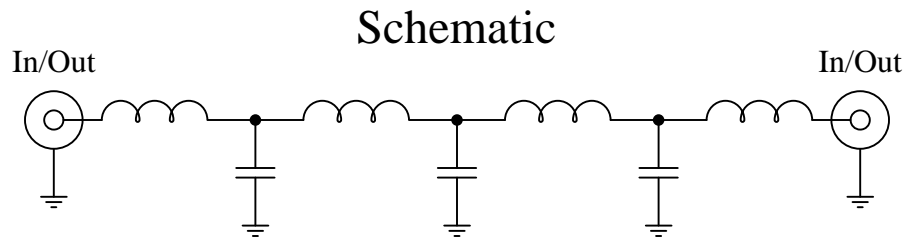


Part Number: CLPFL-0800

Low Pass Range  
DC to 800 MHz



### Features:

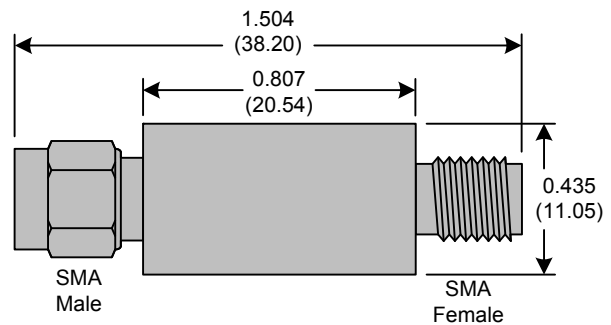
- 7<sup>th</sup> Order Butterworth Response
- 50Ω SMA Connectors

### Applications:

- Test Equipment
- Lab Use

### Maximum Ratings:

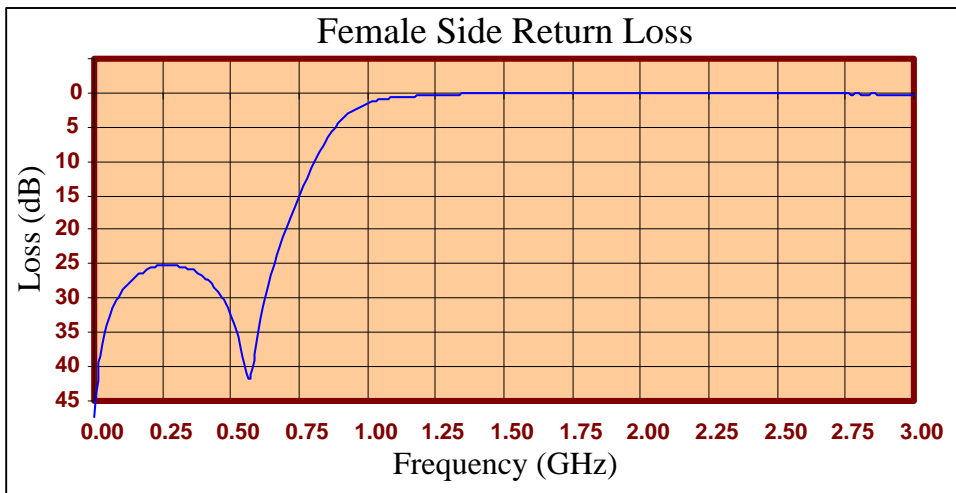
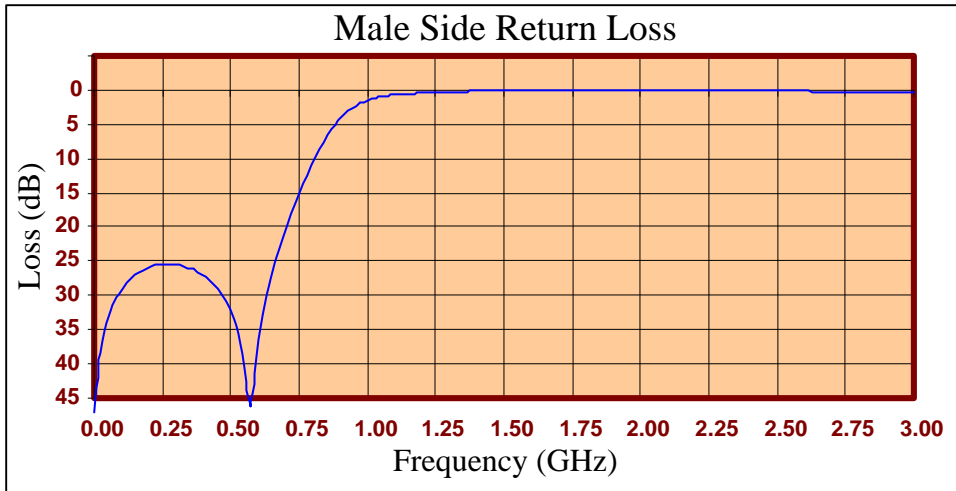
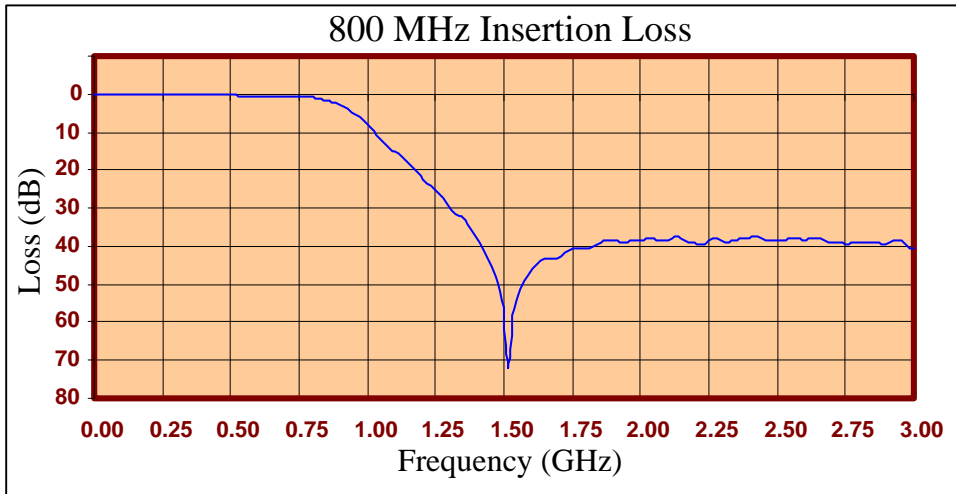
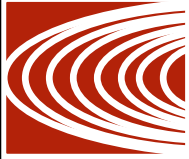
- +36dBm (4 Watts)
- Operating Temperature: -40°C to 85°C
- Storage Temperature: -55°C to 100°C

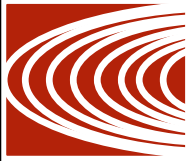


Crystek's new line of Low Pass Filters are designed in a rugged SMA housing. This filter line has excellent out-of-band rejection. Designed for Test Equipment and General Lab Use.

Rev C

Page 1 of 3





FREQ (MHz)	INSERTION LOSS (dB)	Male Return Loss (dB)	Female Return Loss (dB)
0.3	0.04	47.15	47.33
15.3	0.04	40.49	40.43
30.3	0.10	36.67	36.69
45.3	0.10	34.10	34.04
60.3	0.11	32.30	32.21
75.3	0.12	30.92	30.77
90.3	0.16	29.85	29.82
105	0.13	28.92	28.85
120	0.14	28.17	28.19
135	0.14	27.61	27.50
150	0.19	27.09	26.97
165	0.19	26.63	26.50
180	0.22	26.25	26.23
195	0.20	26.02	25.84
210	0.19	25.81	25.57
225	0.21	25.57	25.47
240	0.23	25.53	25.24
255	0.23	25.42	25.26
270	0.24	25.41	25.16
285	0.23	25.42	25.13
300	0.24	25.45	25.31
330	0.28	25.75	25.43
405	0.29	27.30	27.10
450	0.33	29.11	29.00
510	0.34	33.57	33.68
585	0.41	41.59	38.30
705	0.55	19.79	19.56
810	0.97	9.90	9.87
900	2.68	4.23	4.25
1005	7.93	1.45	1.43
1245	24.93	0.36	0.33
1500	52.14	0.08	0.04
1755	41.79	0.00	-0.09
1995	39.00	-0.01	-0.05
2250	39.17	0.01	0.00
2505	39.04	0.12	0.09
2745	39.78	0.24	0.17
3000	41.10	0.36	0.25

**Product Control:**

Crystek Part Number:	CLPFL-0800	Release Date:	04-Aug-2015
Revision Level:	C	Responsible:	K. Piotrowicz

Rev C
Page 3 of 3

