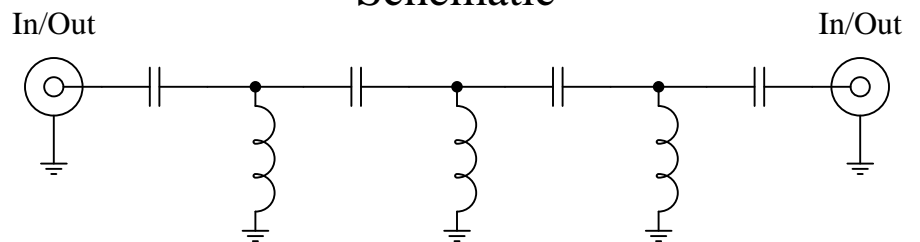


Part Number: CHPFL-0500



### Schematic



### Features:

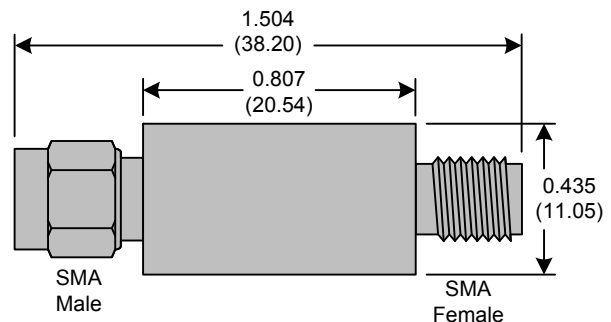
- 7<sup>th</sup> Order Butterworth Response
- 50Ω SMA Connectors

### Applications:

- Test Equipment
- Lab Use

### Maximum Ratings:

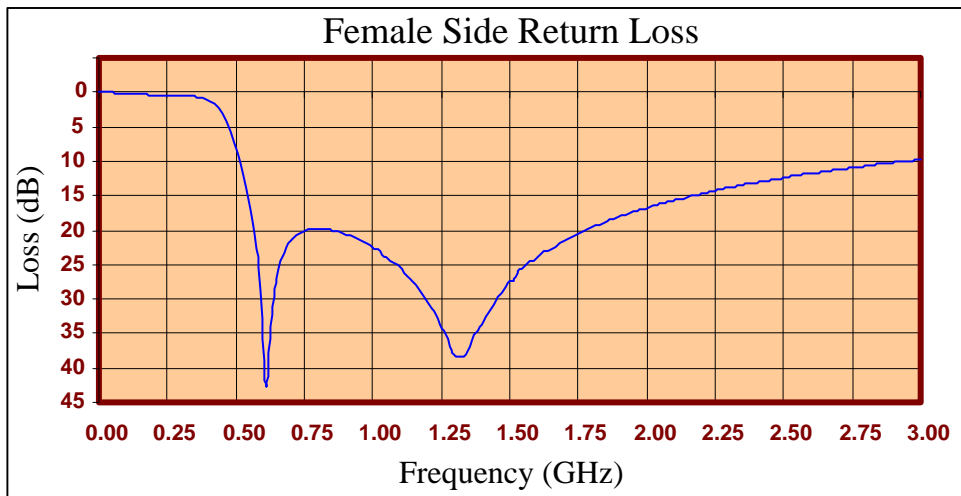
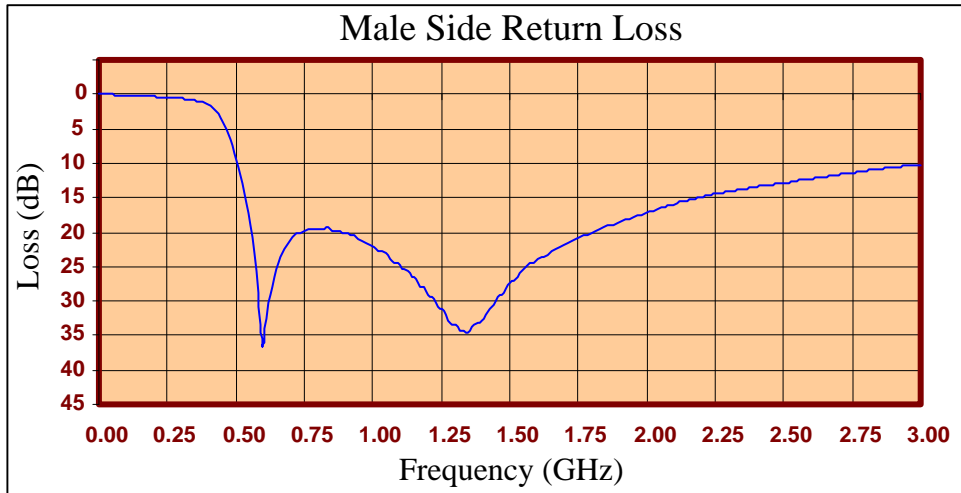
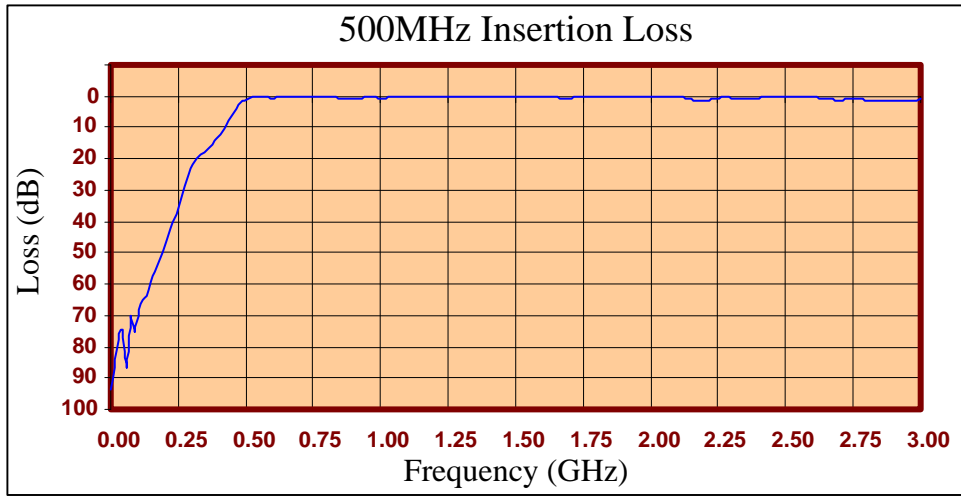
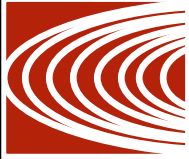
- +36dBm (4 Watts)
- Operating Temperature: -40°C to 85°C
- Storage Temperature: -55°C to 100°C



Crystek's line of High Pass Filters are designed in a rugged SMA housing. This filter line has excellent out-of-band rejection. Designed for Test Equipment and General Lab Use.

Rev E

Page 1 of 3





FREQ (MHz)	INSERTION LOSS (dB)	Male Return Loss (dB)	Female Return Loss (dB)
0.3	112.15	0.00	0.00
15.3	96.62	0.01	0.01
30.3	95.24	0.02	0.01
45.3	97.99	0.02	0.03
60.3	85.58	0.06	0.08
75.3	82.62	0.06	0.09
90.3	75.25	0.08	0.08
105	69.15	0.09	0.11
120	66.00	0.13	0.16
135	64.64	0.21	0.20
150	62.93	0.21	0.26
165	59.84	0.31	0.33
180	55.63	0.31	0.35
195	50.32	0.34	0.36
210	44.54	0.35	0.36
225	40.93	0.38	0.37
240	39.67	0.42	0.41
255	38.15	0.47	0.45
270	35.55	0.52	0.48
285	31.85	0.58	0.51
300	27.12	0.62	0.54
330	19.31	0.73	0.60
405	9.58	1.72	1.34
450	5.44	3.88	3.18
510	0.81	10.62	9.23
585	0.73	28.93	25.35
705	0.29	20.71	21.33
810	0.19	19.67	19.92
900	0.55	20.25	20.69
1005	0.38	22.15	22.87
1245	0.28	31.09	33.85
1500	0.13	27.51	27.36
1755	0.00	20.75	20.45
1995	0.31	17.24	16.86
2250	0.83	14.51	14.28
2505	0.80	12.90	12.38
2745	1.14	11.43	10.97
3000	1.51	10.21	9.77

**Product Control:**

Crystek Part Number:	CHPFL-0500	Release Date:	18-Aug-2015
Revision Level:	E	Responsible:	K. Piotrowicz

Rev E
Page 3 of 3

