

**Description: 2012 UWB Band Pass Filter**

**PART NUMBER: BPF2012LKAMR6580A**

**Features:**

- Compact size : 2.0 x1.25x0.95mm
- RoHS compliant
- AEC-Q200 Qualified

**Applications:**

- IEEE, 802.15.4

**ELECTRICAL SPECIFICATIONS**

DESCRIPTION	Value
Pass Band	6240~8240 MHz
Insertion Loss	1.55 dB (typ.) / 2.5 dB (Max.)
Return Loss	14.1 dB (typ.) / 10 dB (Min.)
Attenuation	36 dB(typ.) / 35 dB min. @ DC~5200 MHz 18.5 dB(typ.) / 15 dB min. @ 5200~5860 MHz 24 dB(typ.) / 10 dB min. @ 9000~9500 MHz 31 dB(typ.) / 30 dB min. @ 9500~18000 MHz
Group Delay (ns)	0.85 ns.(typ.) / 3.0 ns. (max.) @ 6240~8240 MHz
Group Delay Ripple (ns)	0.35 ns.(typ.) / 1.0 ns. (max.) @ 6240~8240 MHz
Operating Temperature	-40 ~ +125°C
Power Capacity	3W max.

In the effort to improve our products, we reserve the right to make changes judged to be necessary.

CONFIDENTIAL AND PROPRIETARY INFORMATION

This document contains confidential and proprietary information of Pulse Electronics, Inc. (Pulse) and is protected by copyright, trade secret and other state and federal laws. Its receipt or possession does not convey any rights to reproduce, disclose its contents, or to manufacture, use or sell anything it may describe. Reproduction, disclosure or use without specific written authorization of Pulse is strictly forbidden.

For more information:

Pulse Worldwide Headquarters  
15255 Innovation Drive #100  
San Diego, CA 92128  
USA  
Tel:1-858-674-8100

Pulse/Larsen Antennas  
18110 SE 34<sup>th</sup> St Bldg 2 Suite 250  
Vancouver, WA 98683  
USA  
Tel: 1-360-944-7551

Europe Headquarters  
Pulse GmbH & Do, KG  
Zeppelinstrasse 15  
Herrenberg, Germany  
Tel: 49 7032 7806 0

Pulse (Suzhou) Wireless Products Co, Inc.  
99 Huo Ju Road(#29 Bldg,4<sup>th</sup> Phase  
Suzhou New District  
Jiangsu Province, Suzhou 215009 PR China  
Tel: 86 512 6807 9998

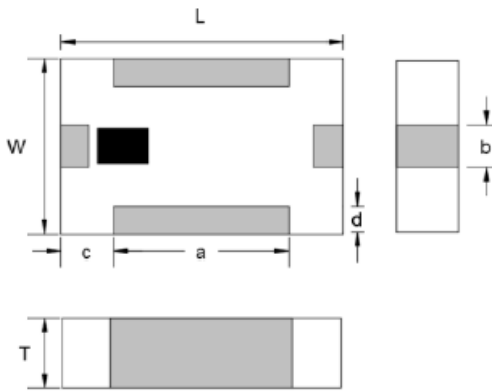


Description: 2012 UWB Band Pass Filter

PART NUMBER: BPF2012LKAMR6580A

MECHANICAL DIMENSION

Outline

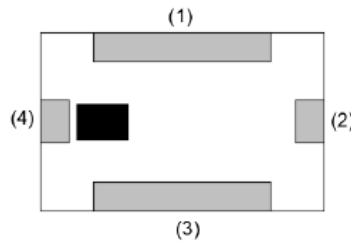


Termination

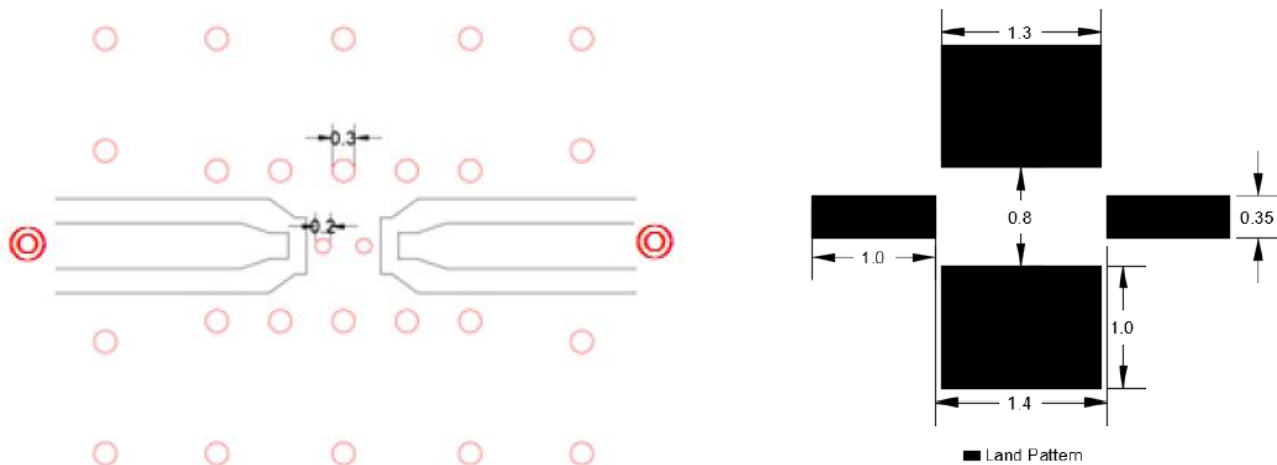
Terminal name	Function
P1	GND
P2	Input/Output
P3	GND
P4	Input/Output

Mechanical

	Dimension
L (mm)	2.00±0.15
W (mm)	1.25±0.10
T (mm)	0.95±0.10
a (mm)	1.25±0.15
b (mm)	0.30±0.15
c (mm)	0.35±0.15
d (mm)	0.25±0.15



Reference design of EVB



Unit : mm

Line width should be designed to match 50Ω characteristic impedance, depending on PCB material and thickness.

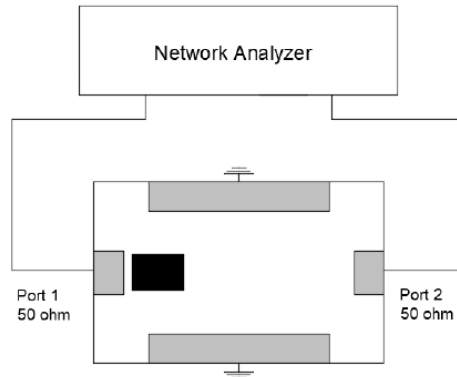
In the effort to improve our products, we reserve the right to make changes judged to be necessary.  
CONFIDENTIAL AND PROPRIETARY INFORMATION

This document contains confidential and proprietary information of Pulse Electronics, Inc. (Pulse) and is protected by copyright, trade secret and other state and federal laws. Its receipt or possession does not convey any rights to reproduce, disclose its contents, or to manufacture, use or sell anything it may describe. Reproduction, disclosure or use without specific written authorization of Pulse is strictly forbidden.

**Description: 2012 UWB Band Pass Filter**

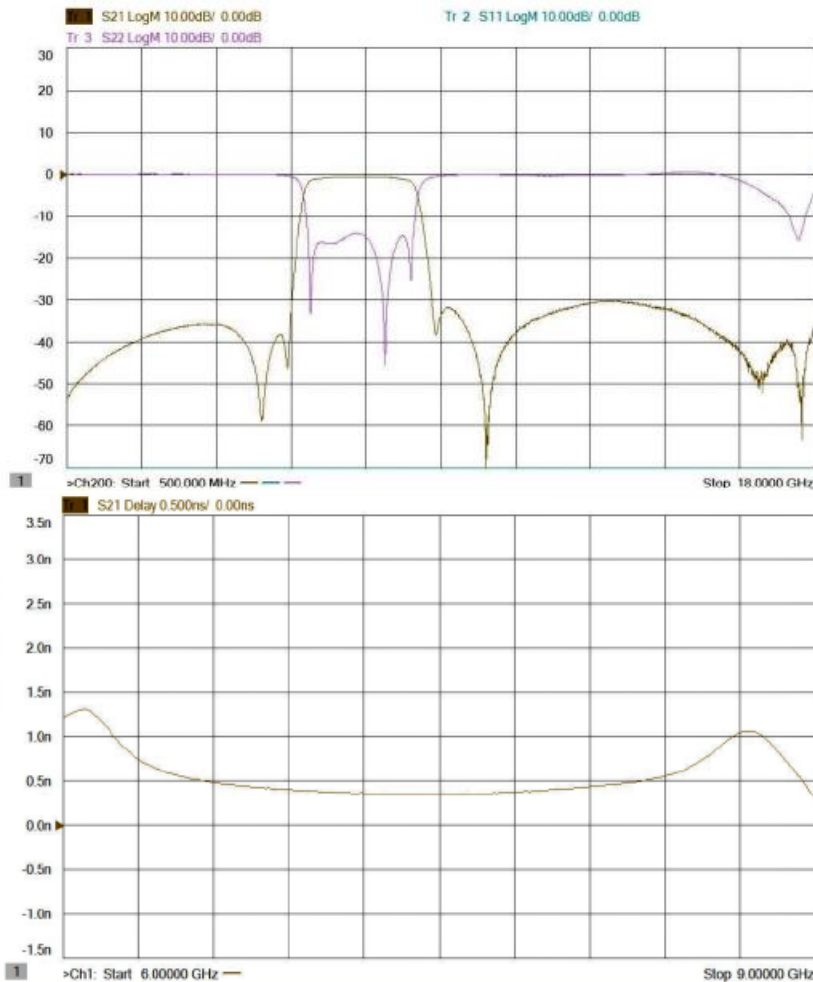
**PART NUMBER: BPF2012LKAMR6580A**

**MEASURING DIAGRAM**



Test Instrument :  
Agilent E5071A Network Analyzer.

**ELECTRICAL PERFORMANCES**



- Measured on Agilent E5071C Network Analyzer

Frequency Characteristics

In the effort to improve our products, we reserve the right to make changes judged to be necessary.

CONFIDENTIAL AND PROPRIETARY INFORMATION

This document contains confidential and proprietary information of Pulse Electronics, Inc. (Pulse) and is protected by copyright, trade secret and other state and federal laws. Its receipt or possession does not convey any rights to reproduce, disclose its contents, or to manufacture, use or sell anything it may describe. Reproduction, disclosure or use without specific written authorization of Pulse is strictly forbidden.

**Description: 2012 UWB Band Pass Filter****PART NUMBER: BPF2012LKAMR6580A****REVISION HISTORY**

Revision	Date	Description
Version 1	May. 13, 2022	- New issue