

Low Pass Filter

RLP-264+

50Ω DC to 264 MHz

Maximum Ratings

Operating Temperature	-40°C to 85°C
Storage Temperature	-55°C to 100°C
RF Power Input	0.5W Max

Permanent damage may occur if any of these limits are exceeded.

Pin Connections

RF IN	2
RF OUT	6
GROUND	1, 3, 4, 5, 7, 8

Features

- high rejection
- sharp insertion loss roll off
- excellent VSWR, 1.2:1 typ. @ passband
- aqueous washable

Applications

- wireless communications
- receivers / transmitters



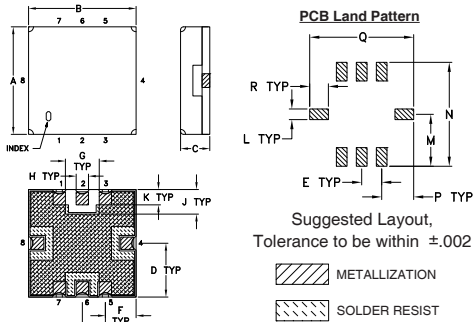
Generic photo used for illustration purposes only
CASE STYLE: GP731

+RoHS Compliant

The +Suffix identifies RoHS Compliance. See our web site for RoHS Compliance methodologies and qualifications

Available Tape and Reel at no extra cost	
Reel Size	Devices/Reel
7"	10, 20, 50, 100, 200
13"	500, 1000

Outline Drawing

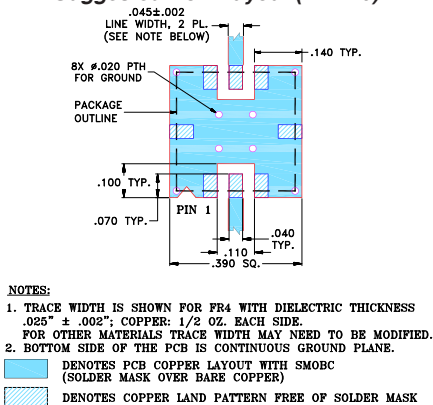


Outline Dimensions (inch/mm)

A	B	C	D	E	F	G	H	J
.350	.350	.100	.175	.075	.100	.110	.040	.080
8.89	8.89	2.54	4.45	1.91	2.54	2.79	1.02	2.03
K	L	M	N	P	Q	R	wt.	
.050	.040	.195	.390	.120	.390	.070	grams	
1.27	1.02	4.95	9.91	3.05	9.91	1.78	0.25	

Note: Please refer to case style drawing for details

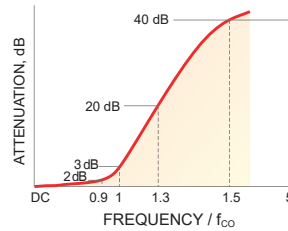
Demo Board MCL P/N: TB-332 Suggested PCB Layout (PL-176)



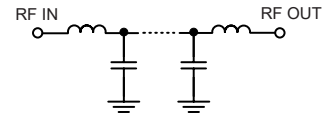
Low Pass Filter Electrical Specifications (T_{AMB} = 25°C)

PASSBAND (MHz)	f _{co} , MHz Nom.	STOPBAND (MHz)		VSWR (:1)	
		(Loss > 20dB)	(Loss > 40dB)	Passband Typ.	Stopband Typ.
DC - 264	288	365 - 425	425 - 1500	1.2	20

Typical Frequency Response

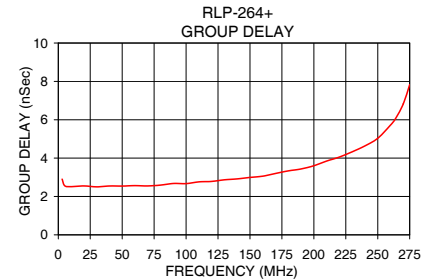
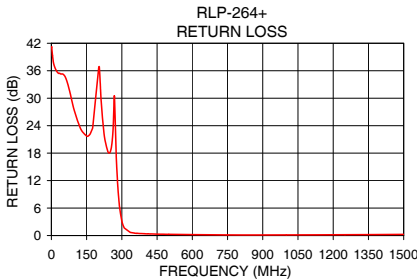
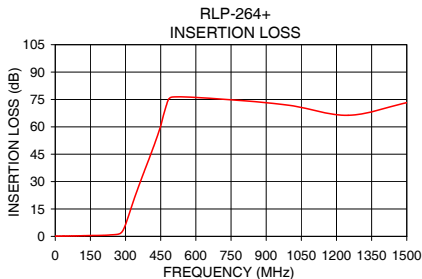


Functional Schematic



Typical Performance Data at 25°C

Frequency (MHz)	Insertion Loss (dB)		Return Loss (dB)	Frequency (MHz)	Group Delay (nSec)
	\bar{x}	σ			
0.5	0.08	0.07	40.94	3.0	2.90
50.0	0.19	0.07	35.24	5.0	2.56
80.0	0.26	0.07	31.06	10.0	2.51
125.0	0.38	0.07	23.29	30.0	2.50
150.0	0.45	0.07	21.73	50.0	2.54
202.0	0.58	0.07	36.85	70.0	2.55
264.0	1.09	0.08	24.64	90.0	2.68
276.0	1.52	0.10	17.67	100.0	2.67
288.0	3.07	0.21	7.44	120.0	2.79
300.0	6.45	0.33	3.13	140.0	2.92
311.0	10.57	0.37	1.62	160.0	3.06
335.0	19.87	0.37	0.71	190.0	3.44
365.0	30.57	0.37	0.48	200.0	3.60
425.0	51.05	0.76	0.36	220.0	4.05
500.0	76.32	8.01	0.27	240.0	4.64
1000.0	71.79	6.79	0.14	250.0	5.03
1250.0	66.32	2.76	0.18	264.0	6.07
1500.0	73.26	6.64	0.25	275.0	7.83



Notes

- Performance and quality attributes and conditions not expressly stated in this specification document are intended to be excluded and do not form a part of this specification document.
- Electrical specifications and performance data contained in this specification document are based on Mini-Circuit's applicable established test performance criteria and measurement instructions.
- The parts covered by this specification document are subject to Mini-Circuit's standard limited warranty and terms and conditions (collectively, "Standard Terms"); Purchasers of this part are entitled to the rights and benefits contained therein. For a full statement of the Standard Terms and the exclusive rights and remedies thereunder, please visit Mini-Circuit's website at www.minicircuits.com/MCLStore/terms.jsp

