



**Electrical specifications**

**Center Frequency:** 836.5 MHz  
**Bandwidth:** 25 MHz  
**Input / Output Impedance:** 50 Ohms  
**Passband:** 824-849 MHz  
**Passband Insertion Loss:** 824-849 MHz 3.8 dB  
**Passband Ripple:** 1.0 dB max  
**Passband Return Loss:** 824-849 MHz 8.5 dB min  
**Rejection:** 804 MHz 11.5 dB min  
**Rejection 2:** 869 MHz 22.5 dB min  
**Power Handling:** 1 W

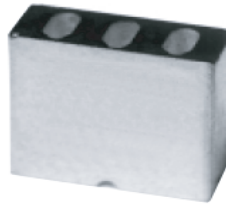
**Mechanical**

**Mounting Method:** SMT  
**Dimensions:** 11.8 x 10.7 x 4.5 mm

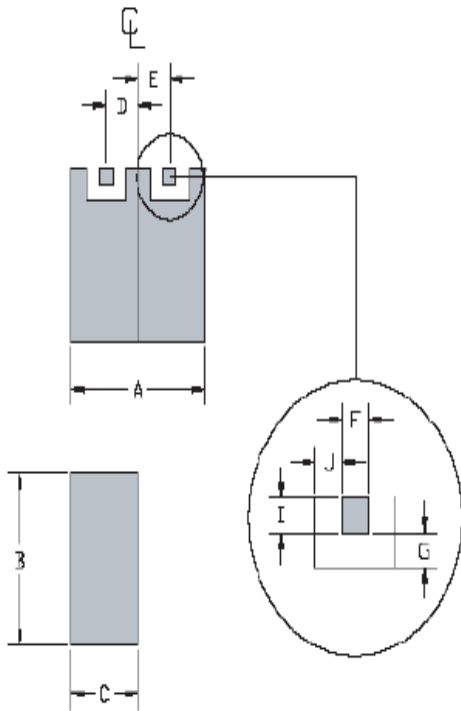
**Environmental**

**Operating Temperature:** -30°C to +70°C  
**Storage Temperature:** -50°C to +90°C

This product is RoHs compliant.



**Mechanical Drawing:**



Dim	Nominal (mm)	Tolerance (mm) +/- or max
A	11.8	max
B	10.7	max
C	4.5	max
D	3.31	0.127
E	3.31	0.127
F	1.3	0.127
G	0.77	0.127
H		
I	1.8	0.127
J	0.77	0.127



**ANATECH ELECTRONICS INC**  
RF & Microwave Filters & Products

# GSM/Cellular TX Filter

## Part Number: AM836B275



### Response Plot:

