



ANATECH ELECTRONICS INC
RF & Microwave Filters & Products

4000 MHz LC Band Pass Filter

Part Number: AE4000B6454



Electrical Specifications

Center Frequency: 4000 MHz
Bandwidth: 400 MHz
Passband: 3800 MHz to 4200 MHz
VSWR: 1.5:1
Insertion Loss: 1 dB Max. @ 3800-4200 MHz
Rejection1: 60 dB Min. @ 3000 MHz
Rejection2: 30 dB Min. @ 3500 MHz
Rejection3: 30 dB Min. @ 4500 MHz
Rejection4: 60 dB Min. @ 5000 MHz
Impedance: 50 Ohms

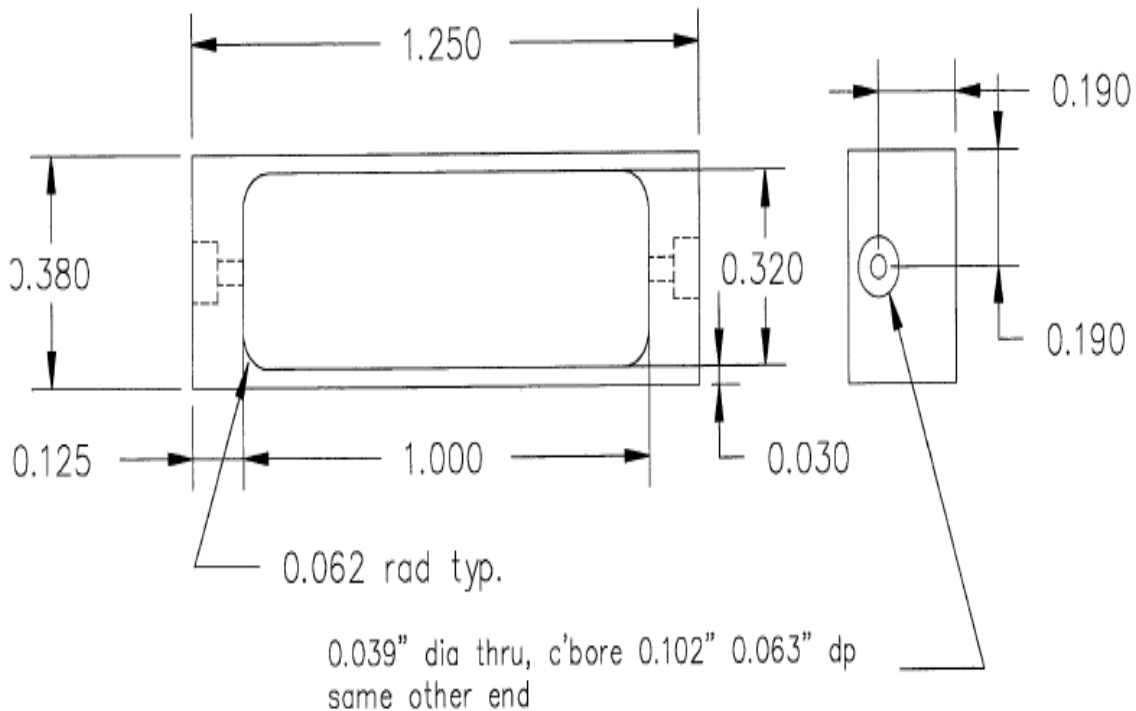
Mechanical

Connector Type: Drop-in
Dimensions: 1.25" X 0.38" x 0.38"

Environmental

Operating Temperature: -25°C to +70°C
Storage Temperature: -40°C to +90°C
Shock: 10 G. 11ms
Vibration: 10 G. 5 to 200Hz

Outline Drawing:



Tolerance: +/-0.01 inches [+/-0.3mm]

Angles: +/-1 Deg.

*Tolerance as shown unless otherwise specified in the datasheet electrical specification tables above.

*When max dimensions are called out the above tolerances do not apply as long as it is under the max call out.

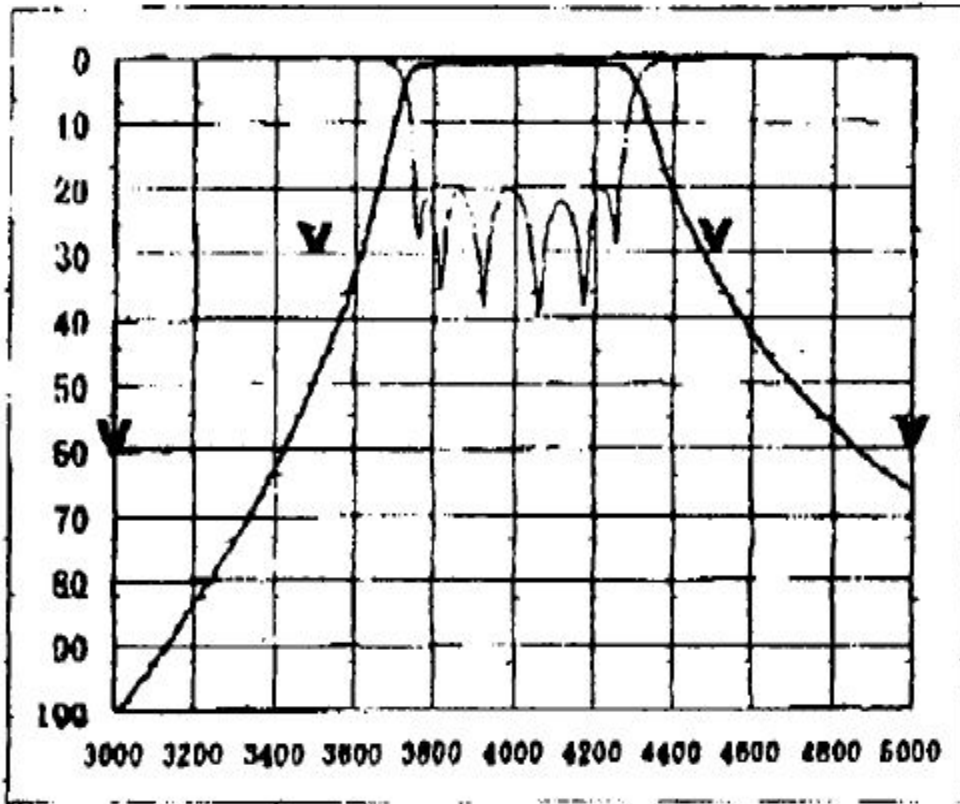
70 Outwater Lane Phone: (973) 772-4242
Garfield, NJ 07026 Fax : (973) 321-3941

Email: sales@anatechelectronics.com
Web: www.anatechelectronics.com



Simulation Plot:

Freq. [MHz]	ATT [dB]	SPEC	Flatness
3000	>60	60	
3500	49.76	30	
3800	0.94	(0.5)	0.28
4000	0.72	1	0.00
4200	0.85	(0.5)	0.13
4500	33.31	30	
5000	66.37	60	



Note: This is a simulation Plot. Actual response plot might differ once product is manufactured.