



# 910-915 MHz Cavity Bandpass Filter

## Part Number: AB912B782



**ANATECH ELECTRONICS INC**  
RF & Microwave Filters & Products

### Electrical specifications

- Center Frequency:** 912.5 MHz
- Bandwidth:** 5 MHz
- 1.5 dB Bandwidth:** 5 MHz max\*
- Input / Output Impedance:** 50 Ohms
- Passband:** 910-915 MHz
- Passband Insertion Loss:** 3 dB max
- Passband Ripple:** <0.2 db
- Passband Return Loss:** > 16 dB
- Out of Band Rejection:**
- >75 dB @ 855-894 MHz
- >75 dB @ 930-950 MHz
- Power Handling:** 20 Watts

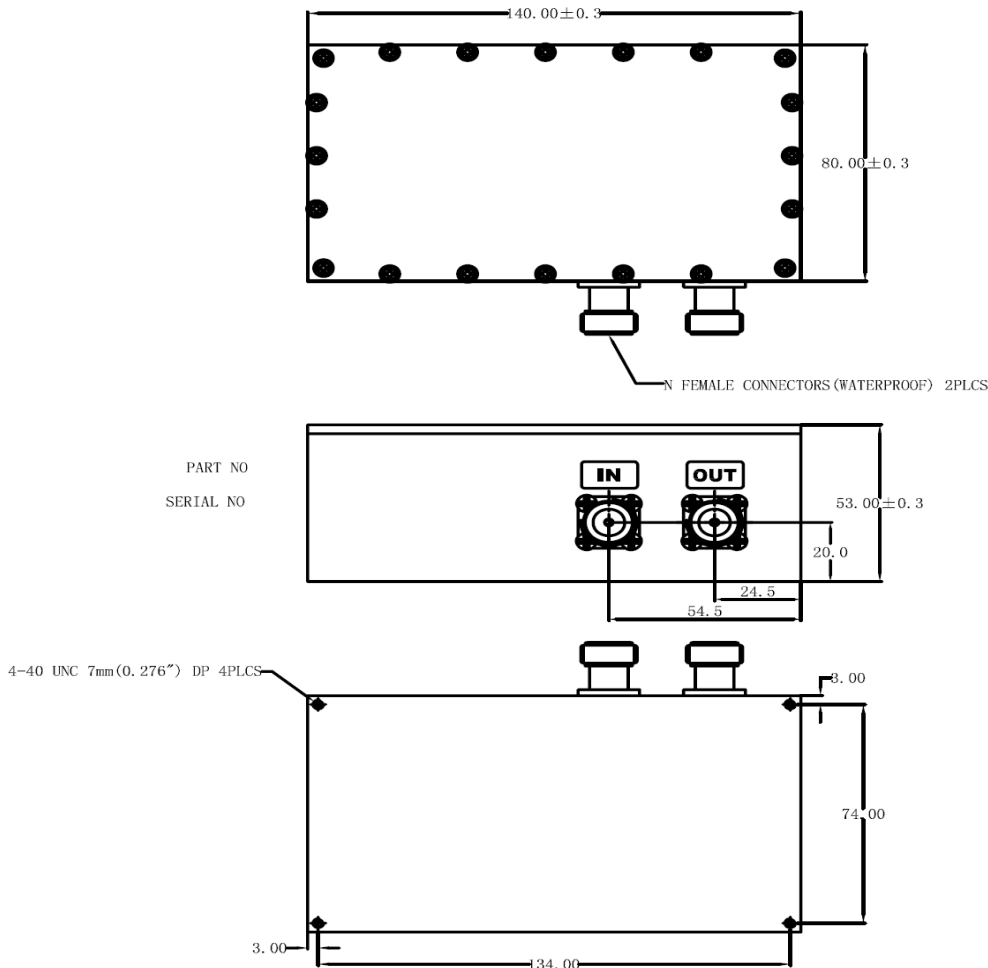
### Mechanical

- Mounting Method:** Threaded Mounting Holes
- Connector Type:** N-Type Female
- Dimensions:** 140 x 134 x 53 mm.

### Environmental

- Operating Temperature:** 0 to +50 deg.C
- Storage Temperature:** -55 to +95 deg.C
- Shock:** 20 G. 11ms
- Vibration:** 20 G.5 to 200 MHz

### Outline Drawing:





**ANATECH ELECTRONICS INC**  
RF & Microwave Filters & Products

# 910-915 MHz Cavity Bandpass Filter

Part Number: AB912B782



## Response Plot:

