



ANATECH ELECTRONICS INC
RF & Microwave Filters & Products

DC-20 MHz Lowpass Filter

Part Number: AE20L8953



Electrical Specifications

Pass Band Frequency: DC – 20 MHz
Insertion Loss: 1dB Max @ 1 – 20 MHz
Return Loss: 14dB Min @ 1-20 MHz
Stop Band Attenuation: 55dB Min. @ 30-40 MHz
Impedance: 50 Ohms

Note: For SMA Version Use PN: AE20L9248

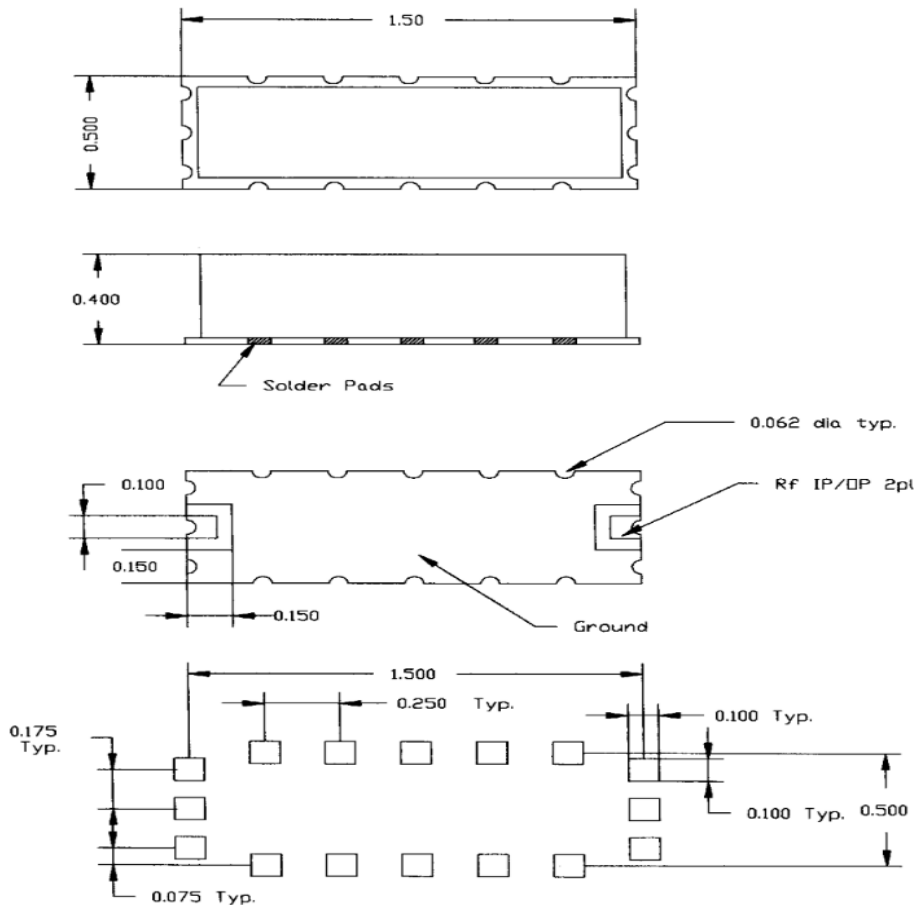
Mechanical

Mounting Method: SMT
Dimensions: 1.50" X 0.50" x 0.40"

Environmental

Operating Temperature: -25°C to +70°C
Storage Temperature: -55°C to +90°C
Shock: 10 G. 11ms
Vibration: 10 G. 5 to 200Hz

Outline Drawing:



2 decimal places: +/-0.01 inches [+/- 0.3mm]

3 decimal places: +/- 0.005 inches [+/- 0.13mm]

Angles: +/- 1 Deg.

When max dimensions are called out the above tolerances do not apply as long as it is under the max call out.

70 Outwater Lane Phone: (973) 772-4242
Garfield, NJ 07026 Fax : (973) 321-3941

Email: sales@anatechelectronics.com
Web: www.anatechelectronics.com



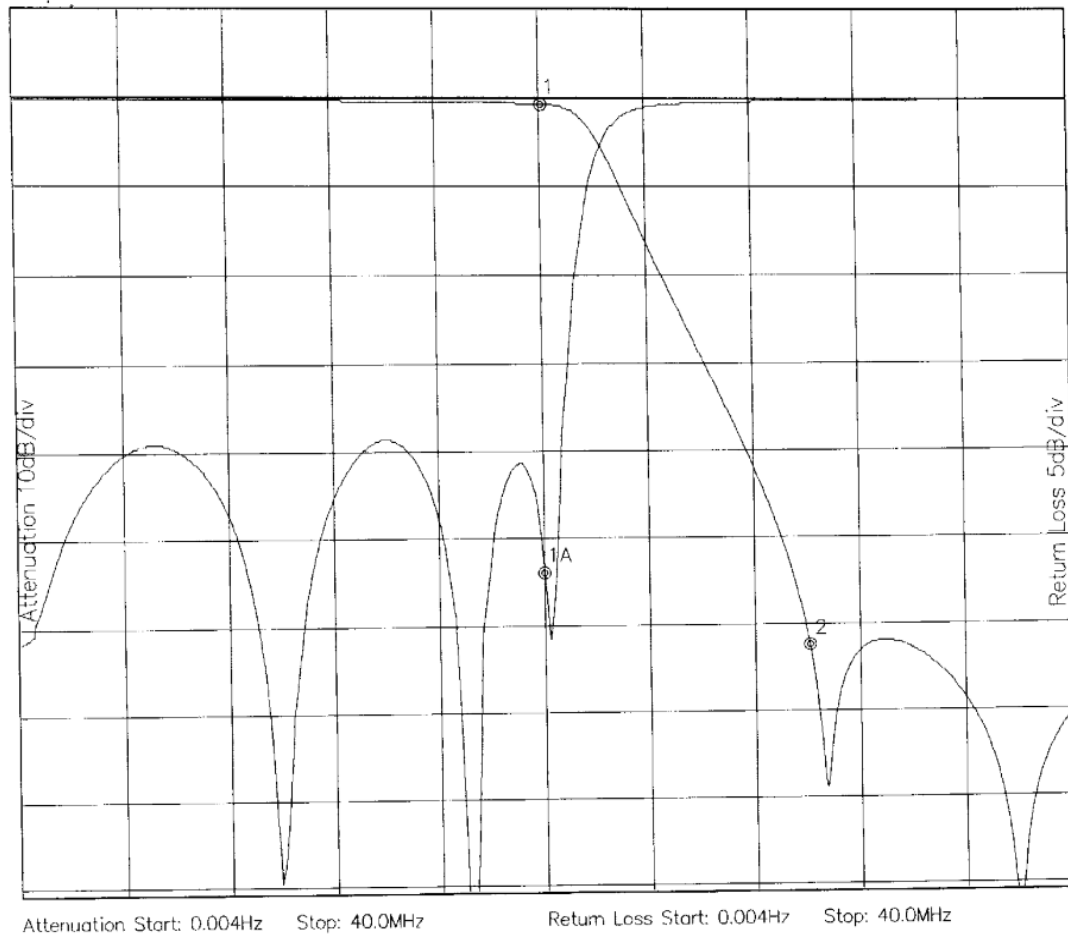
ANATECH ELECTRONICS INC
RF & Microwave Filters & Products

DC-20 MHz Lowpass Filter

Part Number: AE20L8953



Response Plot:



Marker 1 Freq 20.032MHz Atten -0.630dB
Marker 2 Freq 30.048MHz Atten -62.414dB

Marker 1A Freq 19.968MHz Ret Loss -26.919dB