



ANATECH ELECTRONICS INC
RF & Microwave Filters & Products

25 MHz LC Bandpass Filter

Part Number: AE25B5358



Electrical Specifications

Center Frequency: 25 MHz
3dB Passband: 24.4 MHz to 25.6 MHz
Insertion Loss: <3.0 dB
Rejection: ≥45dB @ 0-12.5 MHz
Rejection2: ≥50dB @ 50 MHz
Impedance: 50 Ohms

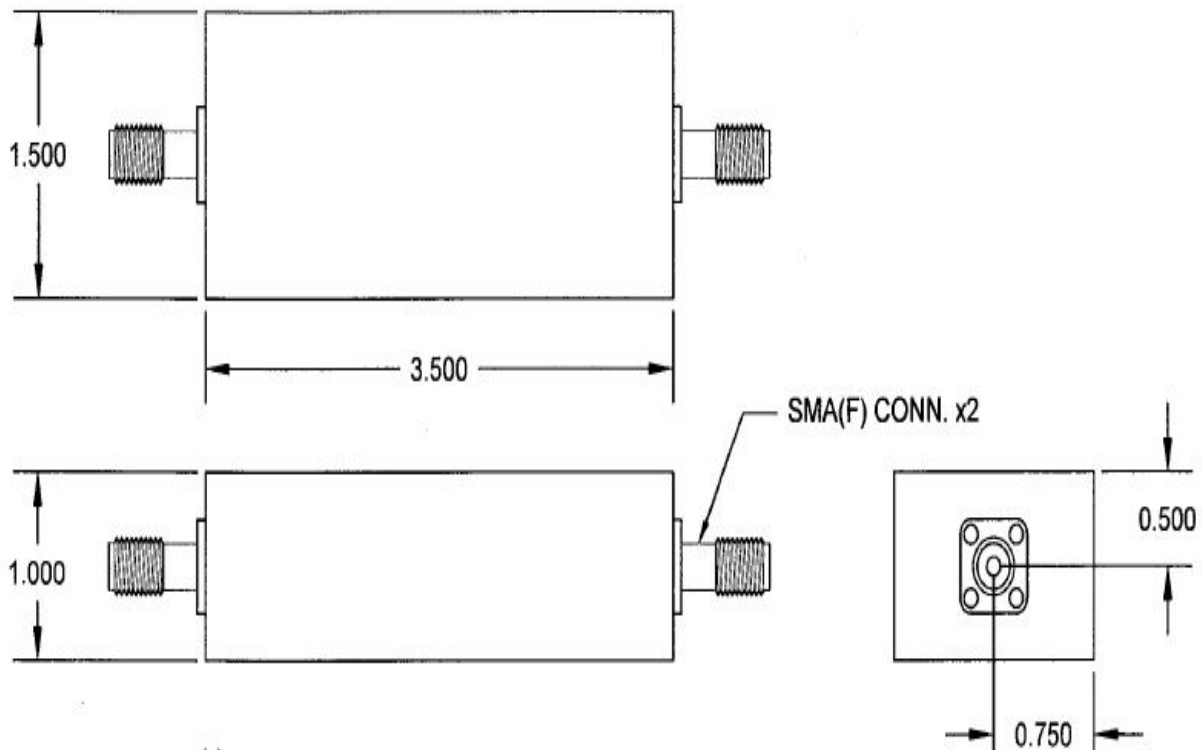
Mechanical

Connector Type: SMA(F)
Dimensions: 3.5" x 1.5" x 1.0" in.

Environmental

Operating Temperature: -25°C to +70°C
Storage Temperature: -40°C to +90°C
Shock: 10 G. 11ms
Vibration: 10 G. 5 to 200Hz

Outline Drawing:



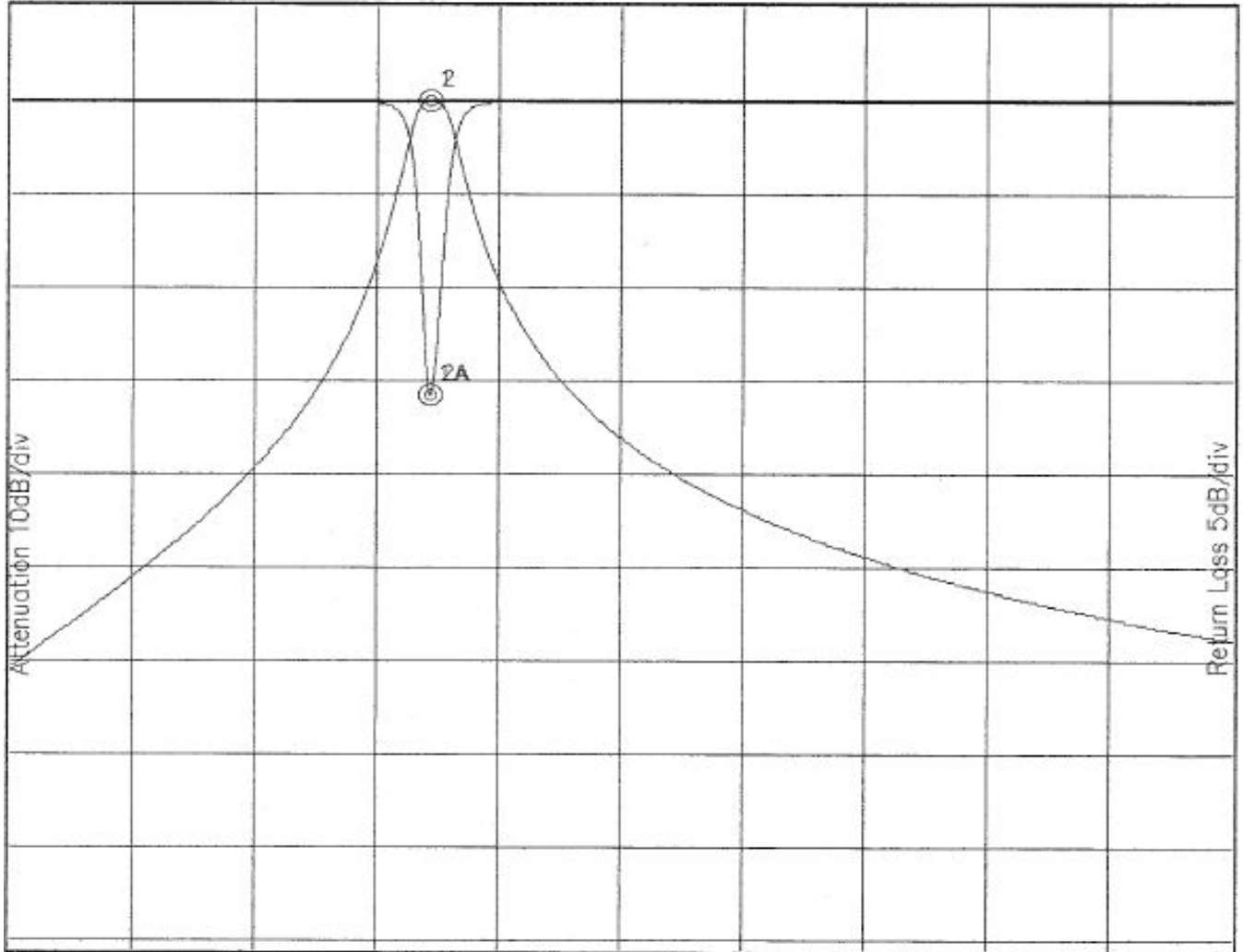


Response Plot:

B5358.lad

DEC 8, 1999

Attenuation/Return Loss



Attenuation Start: 12.0MHz Stop: 50.0MHz

Return Loss Start: 12.0MHz Stop: 50.0MHz

Offset -0.6521dB

Marker 1 Freq 25.015MHz Atten 0.009dB

Marker 1A Freq 25.015MHz Ret Loss -15.702dB

Marker 2 Freq 25.015MHz Atten 0.009dB

Marker 2A Freq 25.015MHz Ret Loss -15.702dB