



Electrical specifications

Center Frequency: 5530 MHz
Passband bandwidth: 10 MHz
Insertion loss over PB: 2 dB@5525-5535 MHz
Rejection 1: 60 dBc min@DC-(CF-20) MHz
Rejection 2: 60 dBc min@(CF+20)MHz-6200 MHz
Group delay variation: 200 ns over any 0.5 MHz in PB
Power: 1 Watt

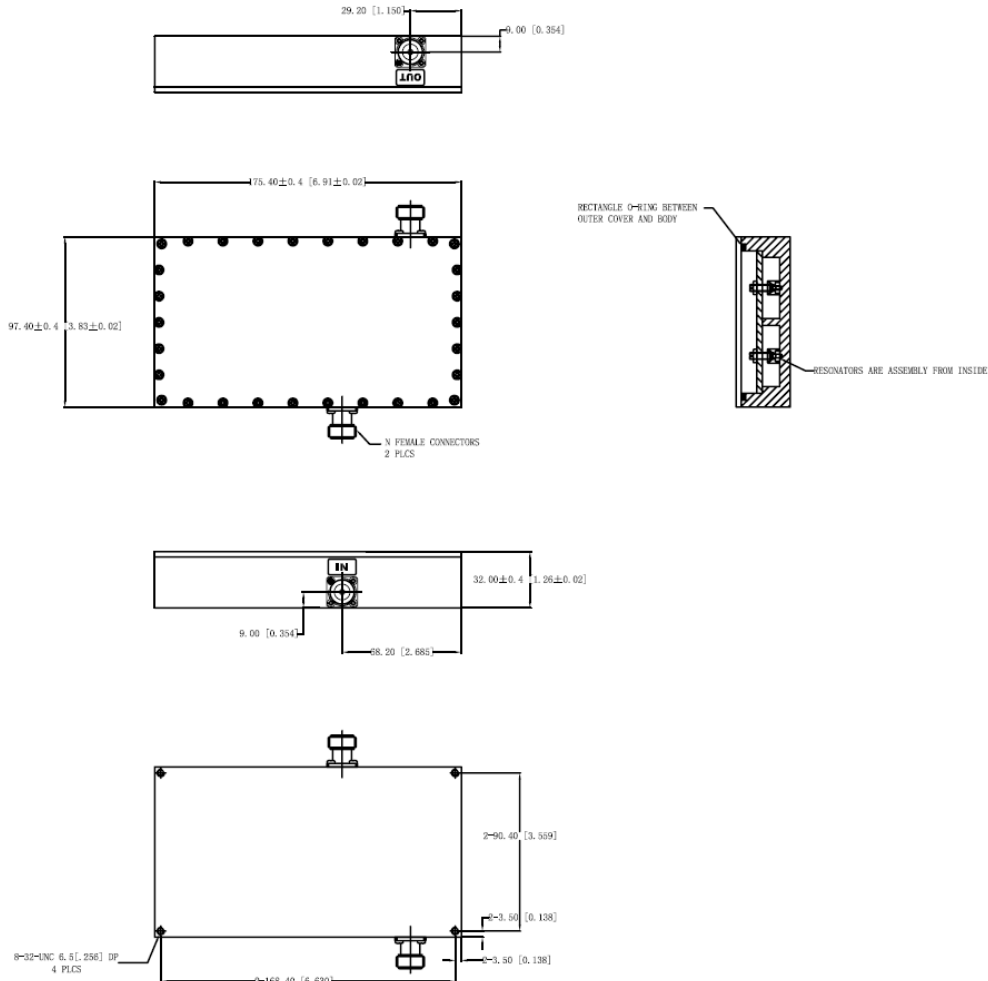
Mechanical

Mounting Method: Threaded Mounting Holes
Connector Type: N-Type female,
Dimensions: 6.93" x 3.86" x 1.26" in

Environmental

Operating Temperature: -45 to +85° C
Storage Temperature: -55 to +95° C
Shock: 20 G. 11ms
Vibration: 20 G. 5 to 200 MHz

Outline Drawing:





ANATECH ELECTRONICS INC
RF & Microwave Filters & Products

5530 MHz WiFi Cavity Filter

Part Number: AB5530B552



Plot:

