



# 915-920 MHz Cavity Bandpass Filter

Part Number: AB917B783

**ANATECH ELECTRONICS INC**  
RF & Microwave Filters & Products



## Electrical specifications

**Passband:** 915-920 MHz  
**Insertion loss(CF):** 3 dB max  
**1.5 dB Bandwidth:** 5 MHz max  
**Return loss:**  $\geq 16$  dB  
**Out of band rejection 1:** 75 dB@860-899 MHz  
**Out of band rejection 2:** 75 dB@934-960 MHz  
**Power Handling:** 20 Watts

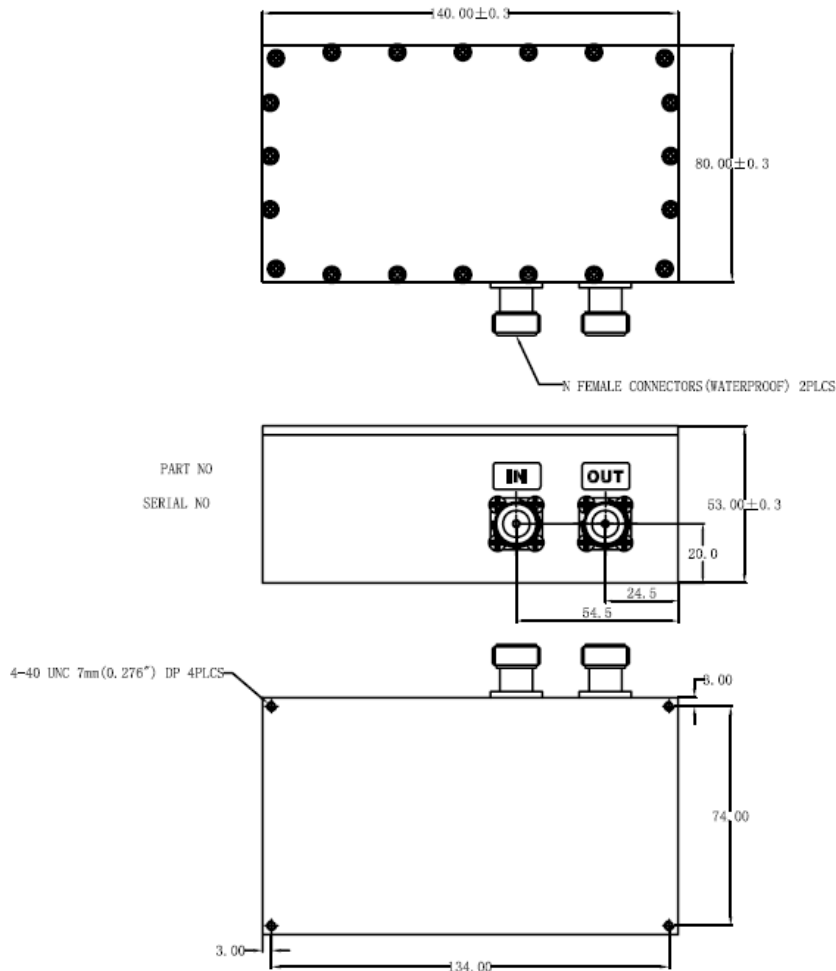
## Mechanical

**Mounting Method:** Threaded Mounting Holes  
**Connector Type:** N Female  
**Dimensions:** 140 X 80 X 53 mm

## Environmental

**Operating Temperature:** -45 to +85° C  
**Storage Temperature:** -55 to +95° C  
**Shock:** 20 G. 11ms  
**Vibration:** 20 G. 5 to 200 MHz

## Outline Drawing:





Plot:

