



Insertion module, Suitable for relay socket base PRS, LED red status display, With free-wheel diode

### Business data

Article number	<u>15422.2</u>
Article name	PRS LED(RD)/110V DC
GTIN (EAN)	4044211104306
Packaging unit	1
Quantity unit	PC
Weight per piece (not including packaging)	2.7 g
Weight per piece (including packaging)	2.8 g
Unit of weight	G
Customs number	85389099
Country of origin	CN
Product description	Status display

---

### Technical data

---

#### Further technical data

Status display red	✓
Voltage range	60-110 VDC
Free-wheel diode	✓

#### Environmental Product Compliance

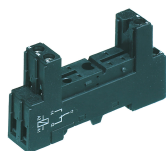
REACH Conform	yes
REACH Reference date	2022-06-10
REACH Candidate Substance Note	No
RoHS Conform	yes

### Media

---

### Accessories

#### ##INVERSE##CONTA-ELECTRONICS



Relay socket base PRS, for miniature power relay with 1 CO contact, Screw connection, Plug-in option for input/suppression modules, Mounting type: Mounting rail TS 35

Article number	Article name	GTIN (EAN)	Packaging unit
<a href="#">15135.2</a>	PRS 1	4044211046187	1 ST



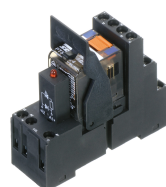
Relay socket base PRS, for industrial relay with 4 CO contacts, Screw connection, Plug-in option for input/suppression modules, Mounting type: Mounting rail TS 35

Article number	Article name	GTIN (EAN)	Packaging unit
<a href="#">15324.2</a>	PRS 4 G	4044211047139	1 ST



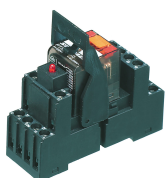
Relay socket base PRS, for industrial relay with 4 CO contacts, Tension-spring connection, Plug-in option for input/suppression modules, Mounting type: Mounting rail TS 35

Article number	Article name	GTIN (EAN)	Packaging unit
<a href="#">15431.2</a>	PRS 4 Z	4044211121488	1 ST



Pre-assembled relay module PRS..., Screw connection, Consisting of: relay socket base, power contact relay, pluggable display/suppression module and holding clip, 4 CO contacts, Input voltage: 110 VDC

Article number	Article name	GTIN (EAN)	Packaging unit
<a href="#">15731.2</a>	PRSU 4G/110V DC	4044211138516	1 ST



Pre-assembled relay module PRS..., Screw connection, Consisting of: relay socket base, power contact relay, pluggable display/suppression module and holding clip, 4 CO contacts, Input voltage: 60 VDC

Article number	Article name	GTIN (EAN)	Packaging unit
<a href="#">15725.2</a>	PRSU 4/60V DC	4044211138455	1 ST

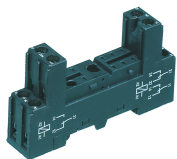


Pre-assembled relay module PRS..., Tension-spring connection, Consisting of: relay socket base, power contact relay, pluggable display/suppression module and holding clip, 4 CO contact, Input voltage: 60 VDC

Article number	Article name	GTIN (EAN)	Packaging unit
<a href="#">15801.2</a>	PRSU 4Z/60V DC	4044211135454	1 ST

## 15422.2 PRS LED(RD)/110V DC

### ##INVERSE##CONTA-ELECTRONICS



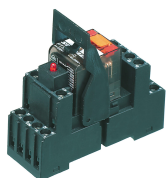
Relay socket base PRS, for miniature power relay with 2 CO contacts, Screw connection, Plug-in option for input/suppression modules, Mounting type: Mounting rail TS 35

Article number	Article name	GTIN (EAN)	Packaging unit
<u>15136.2</u>	PRS 2	4044211046194	1 ST



Relay socket base PRS, for miniature power relay with 2 CO contacts, Screw connection, Plug-in option for input/suppression modules, Mounting type: Mounting rail TS 35

Article number	Article name	GTIN (EAN)	Packaging unit
<u>15320.2</u>	PRS 2 G	4044211047115	1 ST



Pre-assembled relay module PRS..., Screw connection, Consisting of: relay socket base, power contact relay, pluggable display/suppression module and holding clip, 4 CO contacts, Input voltage: 110 VDC

Article number	Article name	GTIN (EAN)	Packaging unit
<u>15726.2</u>	PRSU 4/110V DC	4044211138462	1 ST



Pre-assembled relay module PRS..., Screw connection, Consisting of: relay socket base, power contact relay, pluggable display/suppression module and holding clip, 4 CO contacts, Input voltage: 60 VDC

Article number	Article name	GTIN (EAN)	Packaging unit
<u>15730.2</u>	PRSU 4G/60V DC	4044211138509	1 ST



Pre-assembled relay module PRS..., Tension-spring connection, Consisting of: relay socket base, power contact relay, pluggable display/suppression module and holding clip, 4 CO contact, Input voltage: 110 VDC

Article number	Article name	GTIN (EAN)	Packaging unit
<u>15802.2</u>	PRSU 4Z/110V DC	4044211135461	1 ST



Pre-assembled relay module PRS..., Screw connection, Consisting of: relay socket base, power contact relay, pluggable display/suppression module and holding clip, 2 CO contacts, Input voltage: 60 VDC

Article number	Article name	GTIN (EAN)	Packaging unit
<u>15416.2</u>	PRSU 2G/60V DC	4044211080839	1 ST

## 15422.2 PRS LED(RD)/110V DC

### ##INVERSE##CONTA-ELECTRONICS



Relay socket base PRS, for miniature power relay with 2 CO contacts, Tension-spring connection, Plug-in option for input/suppression modules, Mounting type: Mounting rail TS 35

Article number	Article name	GTIN (EAN)	Packaging unit
<u>15789.2</u>	PRS 2 Z	4044211135256	1 ST



Pre-assembled relay module PRS..., Tension-spring connection, Consisting of: relay socket base, power contact relay, pluggable display/suppression module and holding clip, 2 CO contact, Input voltage: 60 VDC

Article number	Article name	GTIN (EAN)	Packaging unit
<u>15793.2</u>	PRSU 2Z/60V DC	4044211135379	1 ST



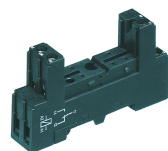
Pre-assembled relay module PRS..., Screw connection, Consisting of: relay socket base, power contact relay, pluggable display/suppression module and holding clip, 2 CO contacts, Input voltage: 60 VDC

Article number	Article name	GTIN (EAN)	Packaging unit
<u>15412.2</u>	PRSU 2/60V DC	4044211080785	1 ST



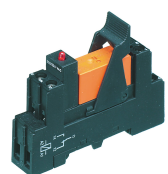
Relay socket base PRS, for miniature power relay with 1 CO contact, Tension-spring connection, Plug-in option for input/suppression modules, Mounting type: Mounting rail TS 35

Article number	Article name	GTIN (EAN)	Packaging unit
<u>15780.2</u>	PRS 1 Z	4044211135249	1 ST



Relay socket base PRS, for miniature power relay with 1 CO contact, Screw connection, Plug-in option for input/suppression modules, Mounting type: Mounting rail TS 35

Article number	Article name	GTIN (EAN)	Packaging unit
<u>15135.2</u>	PRS 1	4044211046187	1 ST

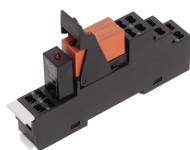


Pre-assembled relay module PRS..., Screw connection, Consisting of: relay socket base, power contact relay, pluggable display/suppression module and holding clip, 1 CO contact, Input voltage: 60 VDC

Article number	Article name	GTIN (EAN)	Packaging unit
<u>15720.2</u>	PRSU 1/60V DC	4044211138400	1 ST

## 15422.2 PRS LED(RD)/110V DC

### ##INVERSE##CONTA-ELECTRONICS



Pre-assembled relay module PRS..., Tension-spring connection, Consisting of: relay socket base, power contact relay, pluggable display/suppression module and holding clip, 1 CO contact, Input voltage: 60 VDC

Article number	Article name	GTIN (EAN)	Packaging unit
<u>15783.2</u>	PRSU 1Z/60V DC	4044211135287	1 ST



Relay socket base PRS, for industrial relay with 4 CO contacts, Push-in connection, Plug-in option for input/suppression modules and cross connections, Mounting type: Mounting rail TS 35

Article number	Article name	GTIN (EAN)	Packaging unit
<u>16504.2</u>	PPRS 4	4044211236250	10 ST



Relay socket base PRS, for miniature power relay with 2 CO contacts, Push-in connection, Plug-in option for input/suppression modules and cross connections, Mounting type: Mounting rail TS 35

Article number	Article name	GTIN (EAN)	Packaging unit
<u>16503.2</u>	PPRS 2	4044211236298	20 ST