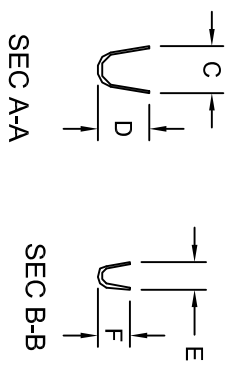
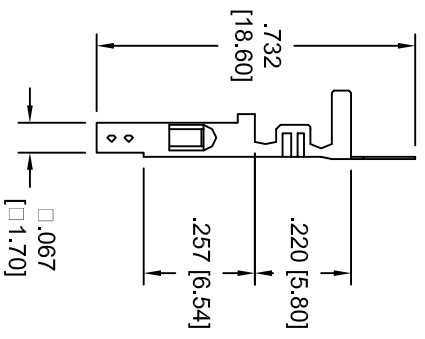
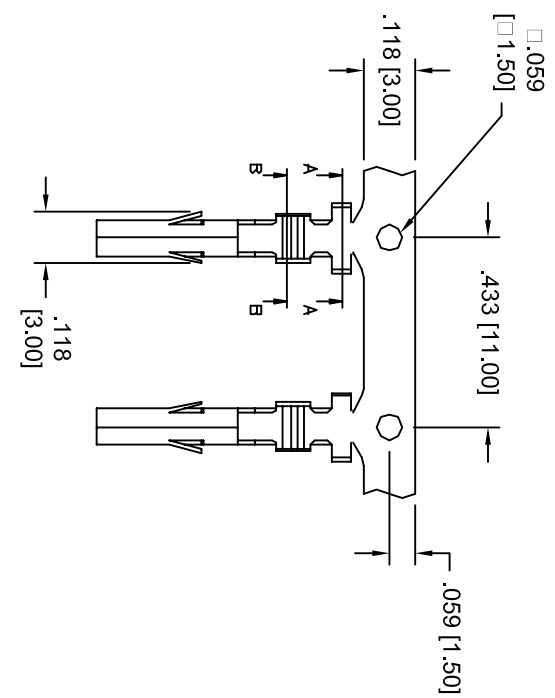


Rev	AWO #	Description	Date	Appr
-		RELEASED	8/11/05	

APPROVED: _____
 DATE: _____ TITLE: _____



WIRE SIZE	CIRCUITS		
AWG	2	4-6	8-10
18	9 A	8 A	7 A
20	7 A	6 A	5 A
22	5 A	4 A	4 A
24	4 A	3 A	3 A

PART #	WIRE AWG	DIMENSIONS			
		C	D	E	F
DMH-A-C-F-R	22 ~ 24	.134 [3.4]	.130 [3.3]	.098 [2.5]	.090 [2.3]
DMH-B-C-F-R	18 ~ 22	.157 [4.0]	.177 [4.5]	.098 [2.5]	.090 [2.3]
DMH-C-C-F-R	16 ~ 18	.157 [4.0]	.177 [4.5]	.110 [2.8]	.106 [2.7]

SPECIFICATIONS:
 Material: _____
 Contacts: Brass
Plating:
 Tin over Copper underplate overall
Electrical:
 Operating voltage: 600 VAC max
 Current rating: / Contact (See Chart)
 Contact resistance: 10 mohms max
 Environmental:
 Lead free, RoHS compliant.

Operating voltage: 600 VAC max
 Current rating: / Contact (See Chart)
 Contact resistance: 10 mohms max
 Environmental:
 Lead free, RoHS compliant.

UNLESS OTHERWISE SPECIFIED
 ALL DIMENSIONS ARE INCHES [MM]
 TOLERANCES: EXCEPT AS NOTED
 INCHES HOLES
 .X ± .10 Ø.X ± .10
 .XX ± .020 Ø.XXX ± .015
 .XXX ± .015 Ø.XXXX ± .010

ADAM TECH
 909 Ratway Avenue, Union, NJ 07083
 Phone: 908-687-5000 Fax: 908-687-5710

TITLE: CRIMP CONTACT, DMH SERIES
 FEMALE, TIN PLATED, ON REELS

DRAWN	SS	8/11/05	DATE
CHECKED			
APPROVED			
SIZE	PART NO.	SCALE	SHEET 1 OF 1
X	DMH-X-C-F-R	NTS	