

RP188

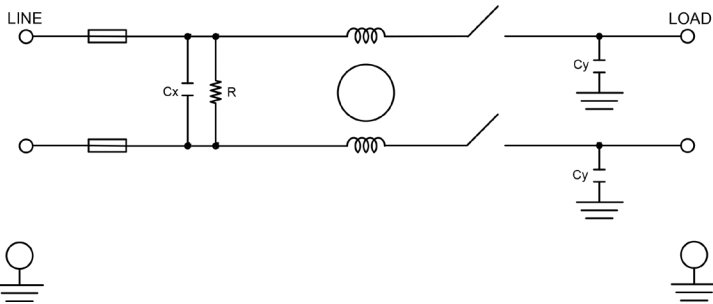
POWER ENTRY MODULE SINGLE STAGE IEC INLET FILTER WITH FUSE AND SWITCH

FEATURES

- » Rated currents include **3A, 6A and 10 A**
- » Single Stage Line Filter
- » Available with **QD** tabs
- » High Performance
- » Agency Approved to UL1283 / 60929, CSA C22.2, EN 60939
- » Y-cap value can be adjusted to fit specifications



ELECTRICAL SCHEMATIC



SPECIFICATIONS

OPERATING FREQUENCY	50/60Hz
IEC INLET	C14
MAX. OPERATING VOLTAGE*	250V +10%
AMBIENT TEMPERATURE	-25 TO 40°C
CLIMATIC CATEGORY	25/100/21
TERMINALS (-T)	QD: 0.25" TABS

TYP. WEIGHT, LBS (KG)	0.2 (0.1)
-----------------------	-----------

TYPICAL LEAKAGE CURRENT

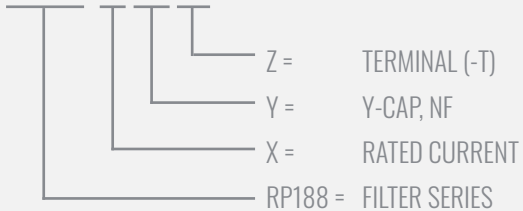
@ 250 VAC 50 Hz	0 - 0.8 mA Max.
@ 120 VAC 60 Hz	0 - 0.4 mA Max.

HIPOT RATINGS

LINE TO GROUND	2121 VDC
----------------	----------

HOW TO ORDER

RP188- X - Y - Z



NOTE: USE ANY COMBINATION OF -X (AMPS) WITH ANY -Y RATINGS
E.G. **RP188-3-0-QD** (3AMPS WITH 0 NF YCAP)

For **X, Y** and **Z** options see product specification table.

TYPICAL APPLICATIONS

- ✓ Medical Devices
- ✓ Industrial Equipment
- ✓ Single-Phase Power Supplies
- ✓ Household Appliances
- ✓ Industrial Equipment
- ✓ Electronic Equipment

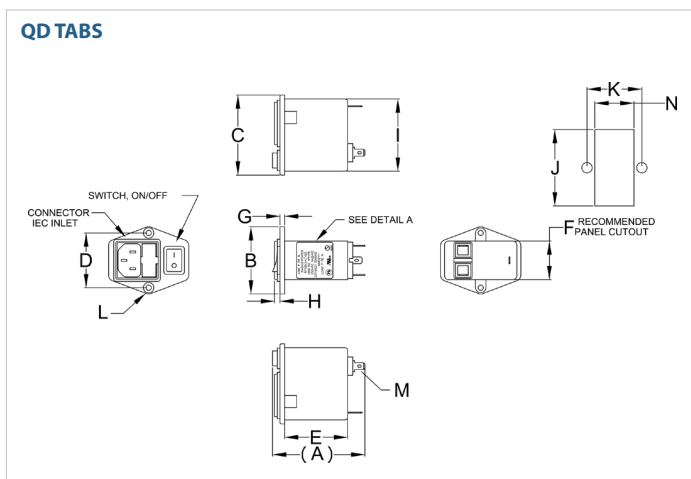
RP188

POWER ENTRY MODULE SINGLE STAGE IEC INLET FILTER WITH FUSE AND SWITCH

MODEL NO.	RATED CURRENT, A @ 40° C	Y-CAP, nF	LEAKAGE CURRENT, mA @ 250V AC, 50 Hz / @ 120V AC, 60 Hz		TERMINAL OPTIONS	MAX. DIMENSIONS" (MM)		
					(QD) OUTPUT	WIDTH	(LENGTH)	HEIGHT
RP188-3-0-QD	3	0	-	-	✓	1.93" (49.1)	2.65" (67.4)	2.30" (58.5)
RP188-3-47-QD	3	0.47	0.07	0.04	✓	1.93" (49.1)	2.65" (67.4)	2.30" (58.5)
RP188-3-1-QD	3	1	0.15	0.09	✓	1.93" (49.1)	2.65" (67.4)	2.30" (58.5)
RP188-3-2.2-QD	3	2.2	0.34	0.19	✓	1.93" (49.1)	2.65" (67.4)	2.30" (58.5)
RP188-3-4.7-QD	3	4.7	0.73	0.42	✓	1.93" (49.1)	2.65" (67.4)	2.30" (58.5)
RP188-6-0-QD	6	0	-	-	✓	1.93" (49.1)	2.65" (67.4)	2.30" (58.5)
RP188-6-47-QD	6	0.47	0.07	0.04	✓	1.93" (49.1)	2.65" (67.4)	2.30" (58.5)
RP188-6-1-QD	6	1	0.15	0.09	✓	1.93" (49.1)	2.65" (67.4)	2.30" (58.5)
RP188-6-2.2-QD	6	2.2	0.34	0.19	✓	1.93" (49.1)	2.65" (67.4)	2.30" (58.5)
RP188-6-4.7-QD	6	4.7	0.73	0.42	✓	1.93" (49.1)	2.65" (67.4)	2.30" (58.5)
RP188-10-0-QD	10	0	-	-	✓	1.93" (49.1)	2.65" (67.4)	2.30" (58.5)
RP188-10-47-QD	10	0.47	0.07	0.04	✓	1.93" (49.1)	2.65" (67.4)	2.30" (58.5)
RP188-10-1-QD	10	1	0.15	0.09	✓	1.93" (49.1)	2.65" (67.4)	2.30" (58.5)
RP188-10-2.2-QD	10	2.2	0.34	0.19	✓	1.93" (49.1)	2.65" (67.4)	2.30" (58.5)
RP188-10-4.7-QD	10	4.7	0.73	0.42	✓	1.93" (49.1)	2.65" (67.4)	2.30" (58.5)

*Contact factory for dimensions.

RP188 MECHANICAL OUTLINES (MM)



SERIES	(A)	B	C	D	E	F	G	H	I	H	K	L	M	N
QD TABS	2.65" (67.4)	1.93" (49.1)	2.30" (58.5)	1.57" (40)	1.81" (46)	1.15" (29.2)	0.13" (3.3)	0.16" (4)	2.12" (53.8)	2.22" (56.3)	1.57" (40)	M3 HOLE, 2x COUNTERSUNK	0.18", 3x (QD, MALE, 4.7, 3x)	1.13" (28.7)

TYPICAL TOLERANCE: +/-0.02" (0.50MM)

RP188

POWER ENTRY MODULE SINGLE STAGE IEC INLET FILTER WITH FUSE AND SWITCH

TYPICAL INSERTION LOSS, dB (50/50 Ohm)

Amps	Freq (MHz)	0.15	0.5	1.0	10	30
3	CM (dB)	28	38	50	50	50
	DM (dB)	18	28	38	60	60
6	CM (dB)	24	38	50	50	50
	DM (dB)	18	28	36	55	55
10	CM (dB)	10	22	30	55	45
	DM (dB)	18	28	36	50	50