

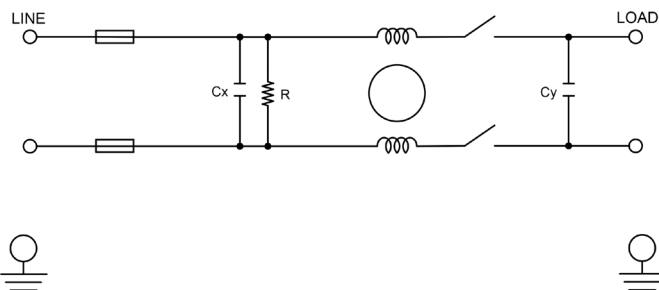
RP188HSN

HIGH PERFORMANCE POWER ENTRY MODULE SINGLE STAGE IEC INLET FILTER WITH FUSE AND SWITCH

FEATURES

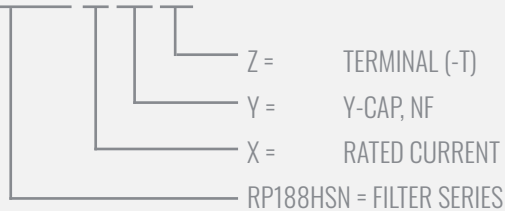
- » Rated currents include **3A, 6A and 10A**
- » Single Stage Line Filter
- » Dual Fuse
- » Available with **QD** tabs
- » High Performance
- » Agency Approved to UL1283 / 60929, CSA C22.2, EN 60939
- » Y-cap value can be adjusted to fit specification

ELECTRICAL SCHEMATIC



HOW TO ORDER

RP188HSN-X-Y-Z



NOTE: USE ANY COMBINATION OF -X (AMPS) WITH ANY -Y RATINGS
E.G. **RP188HSN-3-1-QD** (3 AMPS WITH 1 NF YCAP)

For **X, Y** and **Z** options see product specification table.



SPECIFICATIONS

OPERATING FREQUENCY	50/60Hz
IEC INLET	C14
MAX. OPERATING VOLTAGE	250V +10%
AMBIENT TEMPERATURE	-25 TO 40°C
CLIMATIC CATEGORY	25/100/21
TERMINALS (-T)	QD: 0.187" TABS

TYP. WEIGHT, LBS (KG)	0.2 (0.1)
-----------------------	-----------

TYPICAL LEAKAGE CURRENT

@ 250 VAC 50 Hz	0 - 0.8 mA Max.
@ 120 VAC 60 Hz	0 - 0.4 mA Max.

HIPOT RATINGS

LINE TO GROUND	2121 VDC
----------------	----------

TYPICAL APPLICATIONS

- ✓ Medical Devices
- ✓ Industrial Equipment
- ✓ Single-Phase Power Supplies
- ✓ Household Appliances
- ✓ Industrial Equipment
- ✓ Electronic Equipment

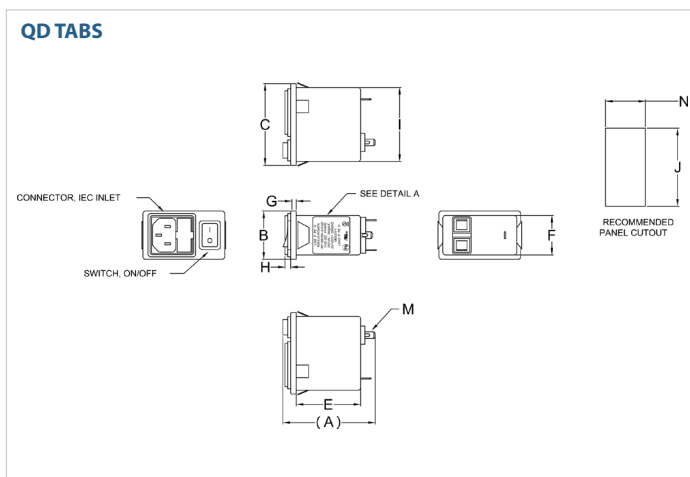
RP188HSN

HIGH PERFORMANCE POWER ENTRY MODULE SINGLE STAGE IEC INLET FILTER WITH FUSE AND SWITCH

MODEL NO.	RATED CURRENT, A @ 40° C	Y-CAP, nF	LEAKAGE CURRENT, mA @ 250V AC, 50 Hz / @ 120V AC, 60 Hz		TERMINAL OPTIONS	MAX. DIMENSIONS" (MM)		
					(QD) OUTPUT	WIDTH	(LENGTH)	HEIGHT
RP188HSN-3-0-QD	3	0	-	-	✓	1.36" (34.5)	2.59" (65.9)	2.30" (58.35)
RP188HSN-3-.47-QD	3	0.47	0.07	0.04	✓	1.36" (34.5)	2.59" (65.9)	2.30" (58.35)
RP188HSN-3-1-QD	3	1	0.15	0.09	✓	1.36" (34.5)	2.59" (65.9)	2.30" (58.35)
RP188HSN-3-2.2-QD	3	2.2	0.34	0.19	✓	1.36" (34.5)	2.59" (65.9)	2.30" (58.35)
RP188HSN-3-4.7-QD	3	4.7	0.73	0.42	✓	1.36" (34.5)	2.59" (65.9)	2.30" (58.35)
RP188HSN-6-0-QD	6	0	-	-	✓	1.36" (34.5)	2.59" (65.9)	2.30" (58.35)
RP188HSN-6-.47-QD	6	0.47	0.07	0.04	✓	1.36" (34.5)	2.59" (65.9)	2.30" (58.35)
RP188HSN-6-1-QD	6	1	0.15	0.09	✓	1.36" (34.5)	2.59" (65.9)	2.30" (58.35)
RP188HSN-6-2.2-QD	6	2.2	0.34	0.19	✓	1.36" (34.5)	2.59" (65.9)	2.30" (58.35)
RP188HSN-6-4.7-QD	6	4.7	0.73	0.42	✓	1.36" (34.5)	2.59" (65.9)	2.30" (58.35)
RP188HSN-10-0-QD	10	0	-	-	✓	1.36" (34.5)	2.59" (65.9)	2.30" (58.35)
RP188HSN-10-.47-QD	10	0.47	0.07	0.04	✓	1.36" (34.5)	2.59" (65.9)	2.30" (58.35)
RP188HSN-10-1-QD	10	1	0.15	0.09	✓	1.36" (34.5)	2.59" (65.9)	2.30" (58.35)
RP188HSN-10-2.2-QD	10	2.2	0.34	0.19	✓	1.36" (34.5)	2.59" (65.9)	2.30" (58.35)
RP188HSN-10-4.7-QD	10	4.7	0.73	0.42	✓	1.36" (34.5)	2.59" (65.9)	2.30" (58.35)

*Contact factory for dimensions.

RP188HSN MECHANICAL OUTLINES (MM)



SERIES	(A)	B	C	D	E	F	G	H	I	J	K	L	M	N
QD TABS	2.59" (65.9)	1.36" (34.5)	2.30" (58.35)	N/A	1.81" (46)	1.15" (29.2)	0.12" (3)	0.16" (4)	2.12" (53.8)	2.22" (56.3)	N/A	N/A	QD, MALE, 4.75, 3x	1.13" (28.7)

TYPICAL TOLERANCE: +/-0.02" (0.50MM)

RP188HSN

HIGH PERFORMANCE POWER ENTRY MODULE SINGLE STAGE IEC INLET FILTER WITH FUSE AND SWITCH

TYPICAL INSERTION LOSS, dB (50/50 Ohm)

Amps	Freq (MHz)	0.15	0.5	1.0	10	30
3	CM (dB)	28	38	50	50	50
	DM (dB)	18	28	38	60	60
6	CM (dB)	24	38	50	50	50
	DM (dB)	18	28	36	55	55
10	CM (dB)	10	22	30	55	45
	DM (dB)	18	28	36	50	50