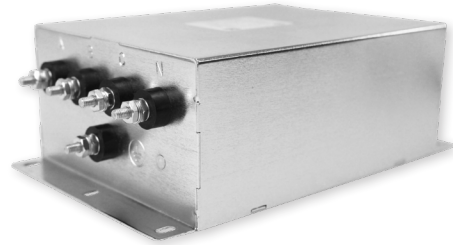


3V

PREMIUM PERFORMANCE 3-PHASE Π FILTER

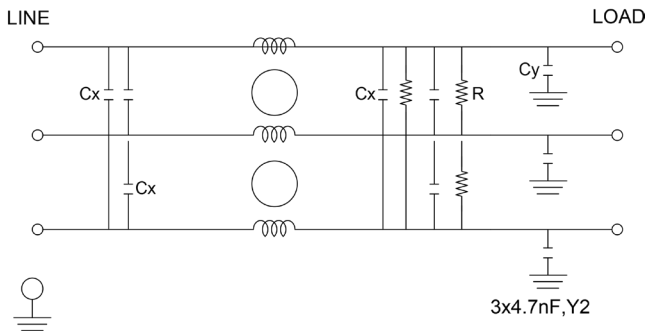
FEATURES

- » **Rated currents** include **16A and 24A**
- » Dual Stage Line Filter
- » Available with **S** (studs) option
- » Flange Mount Available
- » Premium performance design
- » Y-cap value can be adjusted to fit specification



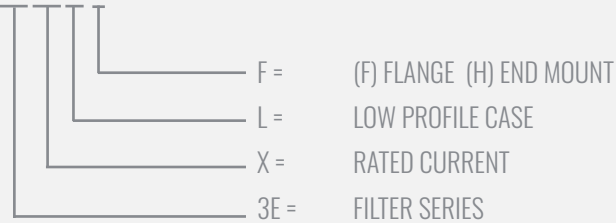
ELECTRICAL SCHEMATIC

DELTA - SUFFIX "D"



HOW TO ORDER

3F15 L F



NOTE: USE ANY COMBINATION OF -X (AMPS) WITH ANY -Y RATINGS
E.G. **3F15 LF**(15 AMPS, LOW PROFILE CASE, FLANGE MOUNT)

SPECIFICATIONS

OPERATING FREQUENCY 50/60HZ
MAX. OPERATING VOLTAGE 440AC +10%
TERMINALS (-T) STUDS:10-32(15-45A),

TYP. WEIGHT, LBS (KG) 11.55 (5.23)

LEAKAGE CURRENT

@ **250 VAC 60 HZ** 0 - 3.6 mA Max.

HIPOT RATINGS

LINE TO GROUND 2200 VDC - 3200 VDC

TYPICAL APPLICATIONS

- ✓ High Power Rectifiers
- ✓ Uninterrupted Power Supplies
- ✓ Processing Equipment
- ✓ Alternative Energy (EV Charging & Solar)
- ✓ Factory Machinery

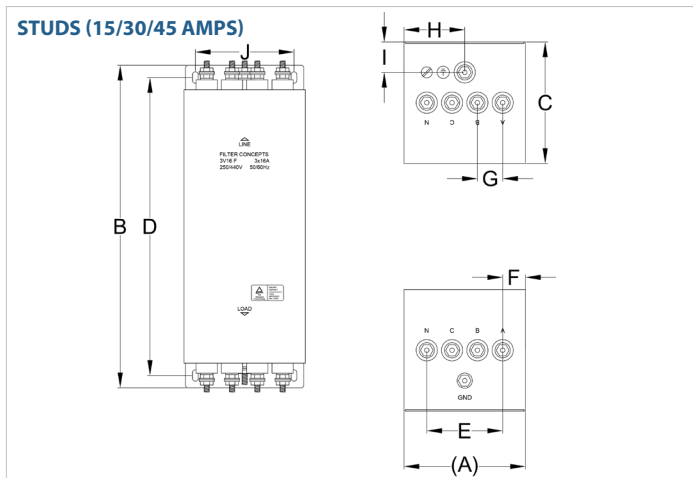
3V

PREMIUM PERFORMANCE 3-PHASE Π FILTER

MODEL NO.	RATED CURRENT (A) @ 40° C	Y-CAP, nF	LEAKAGE CURRENT, mA @ 250V AC, 60 Hz	TERMINAL OPTIONS		MAX. DIMENSIONS" (MM)		
				(QD)INPUT/OUTPUT	(S) INPUT/OUTPUT	WIDTH	(LENGTH)	HEIGHT
3V16	16	*	1.8mA	*	*	4.00"(102)	10.62"(270)	4.00"(102)
3V16B F	16	4x.001μF/4x.022μF	3.6mA		✓	4.00"(102)	10.62"(270)	4.00"(102)
3V16D F	16	3x.001μF/3x.01μF	1.8mA		✓	4.00"(102)	10.62"(270)	4.00"(102)
3V24	24	*	1.8mA	*	*	5.00"(127)	14.96"(380)	4.75"(121)

*Contact factory for dimensions.

3V MECHANICAL OUTLINES



SERIES	(A)	B	C	D	E	F	G	H	I	J
16 amps	4.00" (102)	10.62" (270)	4.00" (102)	9.81" (249)	2.50" (64)	0.75" (19)	0.83" (21)	2.00" (51)	1.00" (25)	3.25" (83)
24 amps	5.00" (127)	14.96" (380)	4.75" (121)	13.98" (355)	3.00" (76)	1.00" (25)	1.00" (25)	2.50" (64)	1.43" (36)	4.00" (102)

TYPICAL TOLERANCE: +/-0.02" (0.50MM)

3V

PREMIUM PERFORMANCE 3-PHASE Π FILTER

TYPICAL INSERTION LOSS, dB (50/50 Ohm)

Amps	Freq (MHz)	0.15	0.5	1.0	10	30
16	CM (dB)	55	60	54	58	59
	DM (dB)	40	50	45	54	58
24	CM (dB)	55	60	54	58	59
	DM (dB)	40	50	45	54	58