

RP610

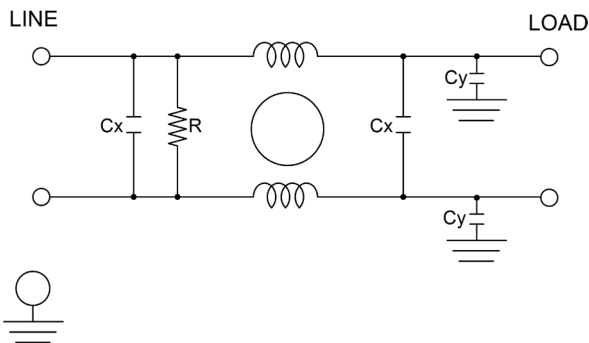
HIGH PERFORMANCE SINGLE STAGE DC POWER LINE FILTER

FEATURES

- » Rated currents include **3A, 6A, 10A, 12A, and 20A**
- » Single Stage Line Filter
- » Available with **QD** (tabs), **W** (wires), and **S** (studs) option
- » High Performance Design
- » Agency Approved to UL1283 / 60929, CSA C22.2, EN 60939
- » Y-cap value can be adjusted to fit specification



ELECTRICAL SCHEMATIC



SPECIFICATIONS

MAX. OPERATING VOLTAGE	250V +10%
AMBIENT TEMPERATURE	-25 TO 55°C
CLIMATIC CATEGORY	25/100/21
TERMINALS (-T)	QD TABS: 0.25"
	WIRE LEADS
	STUDS 3-20A (M4)
TYP. WEIGHT, LBS (KG)	0.7 (0.3)

HIPOT RATINGS

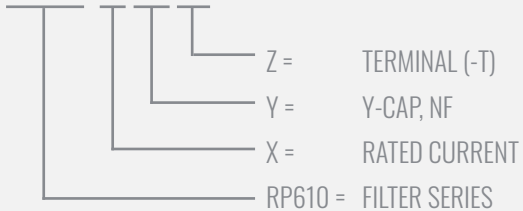
LINE TO GROUND	1800 VDC
-----------------------	----------

TYPICAL APPLICATIONS

- ✓ High power rectifiers
- ✓ Uninterrupted power supplies
- ✓ Inverters
- ✓ VFD
- ✓ PWM

HOW TO ORDER

RP610-X-Y-Z



NOTE: USE ANY COMBINATION OF -X (AMPS) WITH ANY -Y RATINGS
E.G. **RP610-10-1000-S** (10AMPS WITH 1000 NF YCAP)

For **X**, **Y**, and **Z** options see product specification table.

RP610

HIGH PERFORMANCE SINGLE STAGE DC POWER LINE FILTER

MODEL NO.	RATED CURRENT, A @ 40° C	Y-CAP, nF	TERMINAL OPTIONS			MAX. DIMENSIONS" (MM)		
			(QD) INPUT/ OUTPUT	(W) INPUT/ OUTPUT	(S) INPUT/ OUTPUT	WIDTH	(LENGTH)	HEIGHT
RP610-3-4.7-QD	3	4.7	✓			2.01"(51)	3.45"(88)	1.61"(41)
RP610-3-4.7-S	3	4.7			✓	2.01"(51)	3.90"(99)	1.57"(40)
RP610-3-4.7-W	3	4.7		✓		*	*	*
RP610-3-10-QD	3	10	✓			2.01"(51)	3.45"(88)	1.61"(41)
RP610-3-10-S	3	10			✓	2.01"(51)	3.90"(99)	1.57"(40)
RP610-3-10-W	3	10		✓		*	*	*
RP610-3-100-QD	3	100	✓			2.01"(51)	3.45"(88)	1.61"(41)
RP610-3-100-S	3	100			✓	2.01"(51)	3.90"(99)	1.57"(40)
RP610-3-100-W	3	100		✓		*	*	*
RP610-3-1000-QD	3	1000	✓			2.01"(51)	3.45"(88)	1.61"(41)
RP610-3-1000-S	3	1000			✓	2.01"(51)	3.90"(99)	1.57"(40)
RP610-3-1000-W	3	1000		✓		*	*	*
RP610-6-4.7-QD	6	4.7	✓			2.01"(51)	3.45"(88)	1.61"(41)
RP610-6-4.7-S	6	4.7			✓	2.01"(51)	3.90"(99)	1.57"(40)
RP610-6-4.7-W	6	4.7		✓		*	*	*
RP610-6-10-QD	6	10	✓			2.01"(51)	3.45"(88)	1.61"(41)
RP610-6-10-S	6	10			✓	2.01"(51)	3.90"(99)	1.57"(40)
RP610-6-10-W	6	10		✓		*	*	*
RP610-6-100-QD	6	100	✓			2.01"(51)	3.45"(88)	1.61"(41)
RP610-6-100-S	6	100			✓	2.01"(51)	3.90"(99)	1.57"(40)
RP610-6-100-W	6	100		✓		*	*	*
RP610-6-1000-QD	6	1000	✓			2.01"(51)	3.45"(88)	1.61"(41)
RP610-6-1000-S	6	1000			✓	2.01"(51)	3.90"(99)	1.57"(40)
RP610-6-1000-W	6	1000		✓		*	*	*
RP610-10-4.7-QD	10	4.7	✓			2.01"(51)	3.45"(88)	1.61"(41)
RP610-10-4.7-S	10	4.7			✓	2.01"(51)	3.90"(99)	1.57"(40)
RP610-10-4.7-W	10	4.7		✓		*	*	*
RP610-10-10-QD	10	10	✓			2.01"(51)	3.45"(88)	1.61"(41)
RP610-10-10-S	10	10			✓	2.01"(51)	3.90"(99)	1.57"(40)
RP610-10-10-W	10	10		✓		*	*	*
RP610-10-100-QD	10	100	✓			2.01"(51)	3.45"(88)	1.61"(41)
RP610-10-100-S	10	100			✓	2.01"(51)	3.90"(99)	1.57"(40)
RP610-10-100-W	10	100		✓		*	*	*
RP610-10-1000-QD	10	1000	✓			2.01"(51)	3.45"(88)	1.61"(41)

ADDITIONAL MODEL NO. >>

RP610

HIGH PERFORMANCE SINGLE STAGE DC POWER LINE FILTER

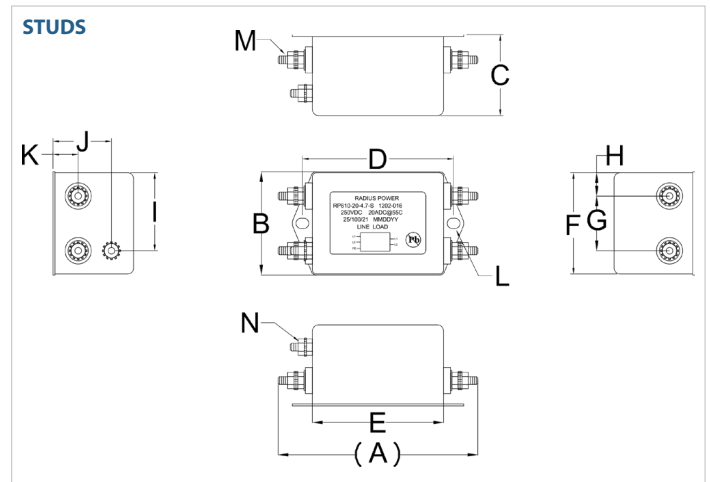
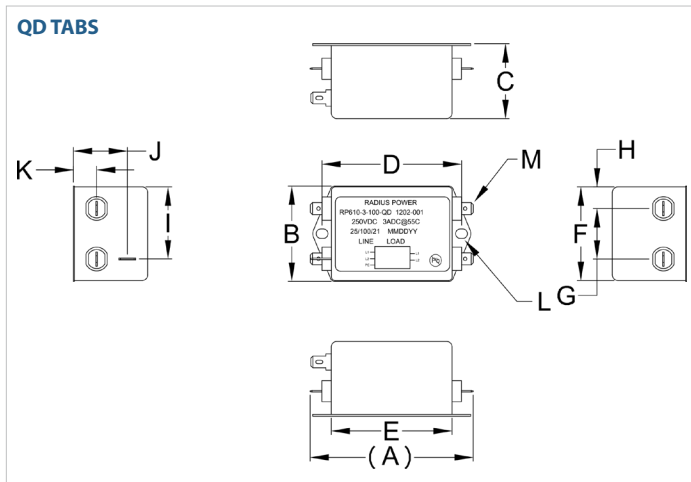
MODEL NO.	RATED CURRENT, A @ 40° C	Y-CAP, nF	TERMINAL OPTIONS			MAX. DIMENSIONS" (MM)		
			(QD) INPUT/ OUTPUT	(W) INPUT/ OUTPUT	(S) INPUT/ OUTPUT	WIDTH	(LENGTH)	HEIGHT
RP610-10-1000-S	10	1000			✓	2.01"(51)	3.90"(99)	1.57"(40)
RP610-10-1000-W	10	1000		✓		*	*	*
RP610-12-10-QD	12	10	✓			2.01"(51)	3.45"(88)	1.61"(41)
RP610-12-10-S	12	10			✓	2.01"(51)	3.90"(99)	1.57"(40)
RP610-12-10-W	12	10		✓		*	*	*
RP610-12-100-QD	12	100	✓			2.01"(51)	3.45"(88)	1.61"(41)
RP610-12-100-S	12	100			✓	2.01"(51)	3.90"(99)	1.57"(40)
RP610-12-100-W	12	100		✓		*	*	*
RP610-12-1000-QD	12	1000	✓			2.01"(51)	3.45"(88)	1.61"(41)
RP610-12-1000-S	12	1000			✓	2.01"(51)	3.90"(99)	1.57"(40)
RP610-12-1000-W	12	1000		✓		*	*	*
RP610-20-4.7-QD	20	4.7	✓			2.01"(51)	3.45"(88)	1.61"(41)
RP610-20-4.7-S	20	4.7			✓	2.01"(51)	3.90"(99)	1.57"(40)
RP610-20-4.7-W	20	4.7		✓		*	*	*
RP610-20-10-QD	20	10	✓			2.01"(51)	3.45"(88)	1.61"(41)
RP610-20-10-S	20	10			✓	2.01"(51)	3.90"(99)	1.57"(40)
RP610-20-10-W	20	10		✓		*	*	*
RP610-20-100-QD	20	100	✓			2.01"(51)	3.45"(88)	1.61"(41)
RP610-20-100-S	20	100			✓	2.01"(51)	3.90"(99)	1.57"(40)
RP610-20-100-W	20	100		✓		*	*	*
RP610-20-1000-QD	20	1000	✓			2.01"(51)	3.45"(88)	1.61"(41)
RP610-20-1000-S	20	1000			✓	2.01"(51)	3.90"(99)	1.57"(40)
RP610-20-1000-W	20	1000		✓		*	*	*

*Contact factory for dimensions.

RP610

HIGH PERFORMANCE SINGLE STAGE DC POWER LINE FILTER

RP610 MECHANICAL OUTLINES (MM)



SERIES	(A)	B	C	D	E	F	G	H	I	J	K	L	M	N
QD TABS	3.45" (88)	2.01" (51)	1.61" (41)	2.95" (75)	2.60" (66)	1.97" (50)	1.06" (27)	0.46" (12)	1.52" (39)	1.14" (29)	0.49" (13)	Ø0.25"x0.20", 2x (Ø 6.4x5.1, 2x)	0.25", 5x QD, MALE, 6.35, 5x	N/A
STUDS	3.90" (99)	2.01" (51)	1.57" (40)	2.95" (75)	2.56" (65)	1.97" (50)	1.06" (27)	0.45" (12)	1.52" (39)	1.14" (29)	0.49" (13)	Ø0.25"x0.20", 2x (Ø 6.4x5.1, 2x)	STUD, M5, 4x	STUD, GND, M5

TYPICAL TOLERANCE: +/-0.02" (0.50MM)

TYPICAL INSERTION LOSS, dB (50/50 Ohm)

Amps	Freq (MHz)	0.15	0.5	1.0	10	30
3	CM (dB)	40	55	65	65	60
	DM (dB)	40	60	65	75	70
6	CM (dB)	40	55	65	65	60
	DM (dB)	42	62	65	75	70
10	CM (dB)	40	55	65	65	60
	DM (dB)	45	65	65	75	70
12	CM (dB)	40	55	65	65	60
	DM (dB)	45	65	65	75	70
20	CM (dB)	20	28	34	55	60
	DM (dB)	30	55	58	60	60