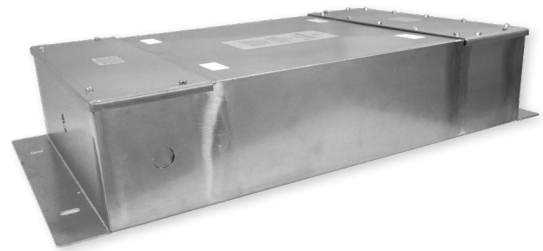


057-01/057-02

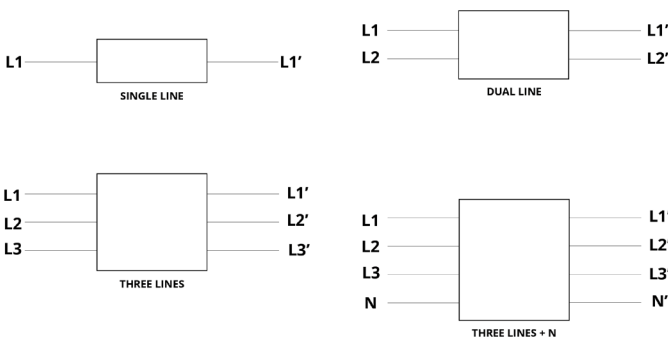
100 dB HIGH PERFORMANCE SHIELDED ROOM FILTERS (@ 14KHz & @150 KHz)

FEATURES

- » Rated currents include **10A, 30A, 60A, 100A, and 250A**
- » Single line, dual line, three line and four line model
- » Shielded, sealed and robust filters for shielded facilities
- » Easy mounting and installation
- » Threaded pipe with EMI gasket (load) and knockouts inlets (line)
- » Meets MIL-STD 220 and CISPR 17
- » UL Listed (Specific Models)



WIRING DIAGRAM



SPECIFICATIONS

OPERATING FREQUENCY	50/60Hz
MAX. OPERATING VOLTAGE	277/480VAC
STORAGE TEMPERATURE	FROM -40° C TO 85° C
OPERATING TEMPERATURE	FROM -40° C TO 85° C
CLIMATIC CATEGORY	25/85/21
TERMINALS (-T)	SCREWS (M6- 10A/30A/60A) (M10 - 100) (M12 - 250)

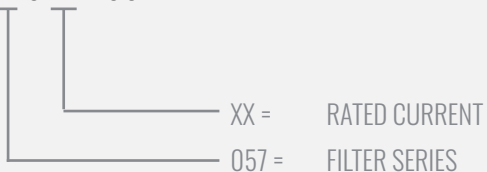
TYP. WEIGHT, LBS (KG) 0.3 (0.1)

HIPOT RATINGS

LINE TO GROUND 2200 VDC

HOW TO ORDER

057.0XX11.00



NOTE: USE ANY COMBINATION OF -X (AMPS) WITH ANY -Y RATINGS
E.G. **057.01011.00**(10AMPS)

For **X** options see product specification table.

TYPICAL APPLICATIONS

- ✓ Shielded rooms and facilities
- ✓ Shielded enclosures
- ✓ Secured communication areas
- ✓ EMC test laboratories
- ✓ Anechoic chambers
- ✓ MRI screened facilities

WARNING*

High capacitance reactive current to ground. Connect filter to ground (PE) before applying power to filter.

057-01/057-02

100 dB HIGH PERFORMANCE SHIELDED ROOM FILTERS

(@ 14KHz & @150 KHz)

MODEL NO.	RATED CURRENT, A @ 40° C	RATED VOLTAGE	REACTIVE A PER LINE @230V/50Hz	100dB FROM		TERMINAL OPTIONS		MAX. DIMENSIONS" (MM)		
				14KHz	150KHz	INPUT	OUTPUT	WIDTH	(LENGTH)	HEIGHT
057.01011.00	10	277	1.9	✓		M6 Screws	M6 Screws	4.33" (110)	20.87"(530)	3.94"(100)
057.01012.00	10	277/480	1.9	✓		M6 Screws	M6 Screws	4.33" (110)	20.87"(530)	3.94"(100)
057.01013.00	10	277/480	1.9	✓		M6 Screws	M6 Screws	4.33" (110)	20.87"(530)	3.94"(100)
057.01014.00	10	277/480	1.9	✓		M6 Screws	M6 Screws	4.33" (110)	20.87"(530)	3.94"(100)
057.01041.00	10	277	1.9		✓	M6 Screws	M6 Screws	4.33" (110)	18.11"(460)	3.94"(100)
057.01042.00	10	277/480	1.9		✓	M6 Screws	M6 Screws	4.33" (110)	18.11"(460)	3.94"(100)
057.01043.00	10	277/480	1.9		✓	M6 Screws	M6 Screws	4.33" (110)	18.11"(460)	3.94"(100)
057.01044.00	10	277/480	1.9		✓	M6 Screws	M6 Screws	4.33" (110)	18.11"(460)	3.94"(100)
057.03011.00	30	277	3.3	✓		M6 Screws	M6 Screws	4.72" (120)	22.84" (580)	5.12" (130)
057.03012.00	30	277/480	3.3	✓		M6 Screws	M6 Screws	4.72" (120)	22.84" (580)	5.12" (130)
057.03013.00	30	277/480	3.3	✓		M6 Screws	M6 Screws	4.72" (120)	22.84" (580)	5.12" (130)
057.03014.00	30	277/480	3.3	✓		M6 Screws	M6 Screws	4.72" (120)	22.84" (580)	5.12" (130)
057.03041.00	30	277	3.3		✓	M6 Screws	M6 Screws	4.72" (120)	19.69" (500)	5.12" (130)
057.03042.00	30	277/480	3.3		✓	M6 Screws	M6 Screws	4.72" (120)	19.69" (500)	5.12" (130)
057.03043.00	30	277/480	3.3		✓	M6 Screws	M6 Screws	4.72" (120)	19.69" (500)	5.12" (130)
057.03044.00	30	277/480	3.3		✓	M6 Screws	M6 Screws	4.72" (120)	19.69" (500)	5.12" (130)
057.06011.00	60	277	4.1	✓		M6 Screws	M6 Screws	5.51" (140)	27.16" (690)	5.12" (130)
057.06012.00	60	277/480	4.1	✓		M6 Screws	M6 Screws	5.51" (140)	27.16" (690)	5.12" (130)
057.06013.00	60	277/480	4.1	✓		M6 Screws	M6 Screws	5.51" (140)	27.16" (690)	5.12" (130)
057.06014.00	60	277/480	4.1	✓		M6 Screws	M6 Screws	5.51" (140)	27.16" (690)	5.12" (130)
057.06041.00	60	277	4.1		✓	M6 Screws	M6 Screws	5.51" (140)	22.05" (560)	5.12" (130)
057.06042.00	60	277/480	4.1		✓	M6 Screws	M6 Screws	5.51" (140)	22.05" (560)	5.12" (130)
057.06043.00	60	277/480	4.1		✓	M6 Screws	M6 Screws	5.51" (140)	22.05" (560)	5.12" (130)
057.06044.00	60	277/480	4.1		✓	M6 Screws	M6 Screws	5.51" (140)	22.05" (560)	5.12" (130)
057.10011.00	100	277	5.5	✓		M10 Screws	M10 Screws	5.91" (150)	33.46" (850)	5.51" (140)
057.10012.00	100	277/480	5.5	✓		M10 Screws	M10 Screws	5.91" (150)	33.46" (850)	5.51" (140)
057.10013.00	100	277/480	5.5	✓		M10 Screws	M10 Screws	5.91" (150)	33.46" (850)	5.51" (140)
057.10014.00	100	277/480	5.5	✓		M10 Screws	M10 Screws	5.91" (150)	33.46" (850)	5.51" (140)
057.10041.00	100	277	5.5		✓	M10 Screws	M10 Screws	5.91" (150)	28.35" (720)	5.51" (140)

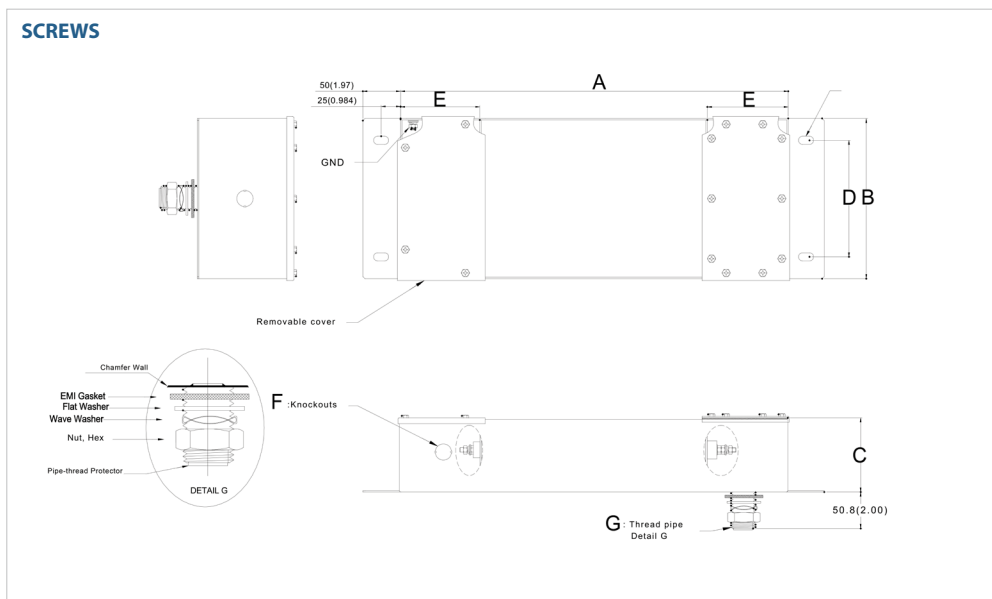
ADDITIONAL MODEL NO. >>

057-01/057-02

100 dB HIGH PERFORMANCE SHIELDED ROOM FILTERS (@ 14KHz & @150 KHz)

MODEL NO.	RATED CURRENT, A @ 40° C	RATED VOLTAGE	REACTIVE A PER LINE @230V/50Hz	100dB FROM		TERMINAL OPTIONS		MAX. DIMENSIONS" (MM)		
				14KHz	150KHz	INPUT	OUTPUT	WIDTH	(LENGTH)	HEIGHT
057.10043.00	100	277/480	5.5		✓	M10 Screws	M10 Screws	5.91"(150)	28.35"(720)	5.51"(140)
057.10044.00	100	277/480	5.5		✓	M10 Screws	M10 Screws	5.91"(150)	28.35"(720)	5.51"(140)
057.25011.00	250	277	5.5	✓		M12 Screws	M12 Screws	7.88"(200)	43.31"(1100)	5.51"(140)
057.25012.00	250	277/480	5.5	✓		M12 Screws	M12 Screws	7.88"(200)	43.31"(1100)	5.51"(140)
057.25013.00	250	277/480	5.5	✓		M12 Screws	M12 Screws	7.88"(200)	43.31"(1100)	5.51"(140)
057.25014.00	250	277/480	5.5	✓		M12 Screws	M12 Screws	7.88"(200)	43.31"(1100)	5.51"(140)
057.25041.00	250	277	5.5		✓	M12 Screws	M12 Screws	7.88"(200)	28.35"(720)	5.51"(140)
057.25042.00	250	277/480	5.5		✓	M12 Screws	M12 Screws	7.88"(200)	28.35"(720)	5.51"(140)
057.25043.00	250	277/480	5.5		✓	M12 Screws	M12 Screws	7.88"(200)	28.35"(720)	5.51"(140)
057.25044.00	250	277/480	5.5		✓	M12 Screws	M12 Screws	7.88"(200)	28.35"(720)	5.51"(140)

057-1/057-2 MECHANICAL OUTLINES" (MM)



SERIES @ 14KHz	A	B	C	D	E	F	G
SCREWS (10A)	20.87" (530)	4.33" (110)	3.94" (100)	3.15" (80)	4.33" (110)	0.875" (22.23)	1-11.5
SCREWS (30A)	22.84" (580)	4.72" (120)	5.12" (130)	3.15" (80)	4.33" (110)	0.875" (22.23)	1-11.5
SCREWS (60A)	27.16" (690)	5.51" (140)	5.12" (130)	3.15" (80)	4.33" (110)	0.875" (22.23)	1-11.5
SCREWS (100A)	33.46" (850)	5.91" (150)	5.51" (140)	3.94" (100)	5.90" (150)	1.375" (34.93)	1-11.5
SCREWS (250A)	43.31" (1100)	7.88" (200)	5.51" (140)	3.94" (100)	5.90" (150)	1.375" (34.93)	1-11.5

057-01/057-02

100 dB HIGH PERFORMANCE SHIELDED ROOM FILTERS
(@ 14HKz & @150 KHz)

SERIES @ 150KHz	A	B	C	D	E	F	G
SCREWS (10A)	18.11"(460)	4.33"(110)	3.94"(100)	3.15"(80)	4.33"(110)	0.875"(22.23)	1-11.5
SCREWS (30A)	19.69"(500)	4.72"(120)	5.12"(130)	3.15"(80)	4.33"(110)	0.875"(22.23)	1-11.5
SCREWS (60A)	22.05"(560)	5.51"(140)	5.12"(130)	3.15"(80)	4.33"(110)	0.875"(22.23)	1-11.5
SCREWS (100A)	28.35"(720)	5.91"(150)	5.51"(140)	3.94"(100)	5.90"(150)	1.375"(34.93)	1-11.5
SCREWS (250A)	28.35"(720)	7.88"(200)	5.51"(140)	3.94"(100)	5.90"(150)	1.375"(34.93)	1-11.5

TYPICAL TOLERANCE: +/- 0.02" (0.50MM)

***CONTACT FACTORY FOR TYPICAL INSERTION LOSS, dB (50/50 Ohm)**