

3H

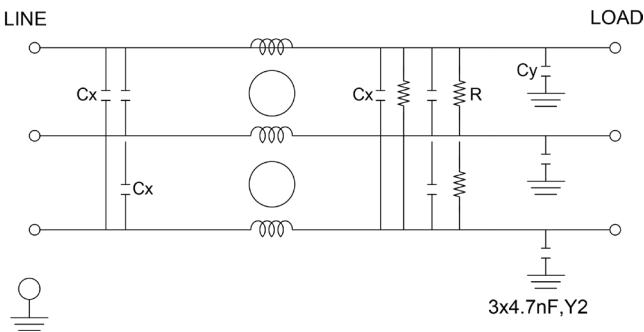
HIGH VOLTAGE 3-PHASE POWER FILTER

FEATURES

- » Rated currents include **15A, 30A, 45A, 60A, 100A, and 140A**
- » Dual Stage Line Filter
- » Available with **S** (studs) option
- » High Voltage Design
- » End Mount Case & Flange Mount Available
- » Agency Approvals UL E78081 and CSA LR53652
- » Y-cap value can be adjusted to fit specification

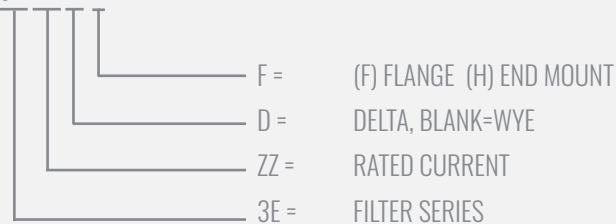
ELECTRICAL SCHEMATIC

DELTA - SUFFIX "D"

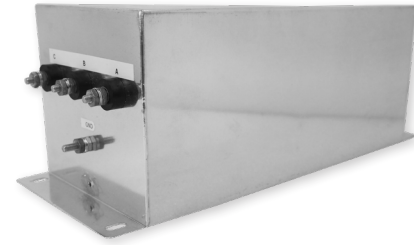


HOW TO ORDER

3HZZD F



NOTE: USE ANY COMBINATION OF -X (AMPS) WITH ANY -Y RATINGS
E.G. **3H45D F**(45 AMPS, DELTA DESIGN, FLANGE MOUNT)



SPECIFICATIONS

OPERATING FREQUENCY	50/60HZ
MAX. OPERATING VOLTAGE*	480AC +10%
TERMINALS (-T)	STUDS:10-32(15-45A), 1/4-20 (60A), 5/16-18 (100A) 3/8-16 (140A)

TYP. WEIGHT, LBS (KG)	6.36-62 (2.88-28.12)
-----------------------	----------------------

LEAKAGE CURRENT

@ 480 VAC 60 HZ	0 - 3.9 mA Max.
-----------------	-----------------

HIPOT RATINGS

LINE TO GROUND	3200 VDC - 3500 VDC
----------------	---------------------

TYPICAL APPLICATIONS

- ✓ High Power Rectifiers
- ✓ Uninterrupted Power Supplies
- ✓ Processing Equipment
- ✓ Alternative Energy (EV Charging & Solar)
- ✓ Factory Machinery

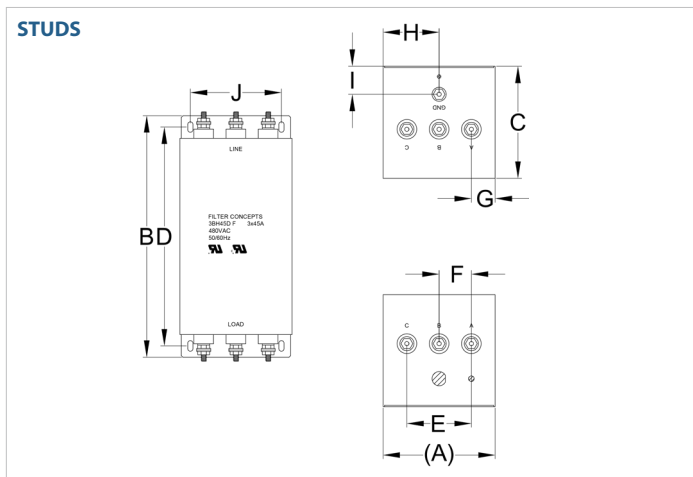
3H

HIGH VOLTAGE 3-PHASE POWER FILTER

MODEL NO.	RATED CURRENT (A) @ 40° C	Y-CAP, nF	LEAKAGE CURRENT, mA @ 480V AC, 60 Hz	TERMINAL OPTIONS		MAX. DIMENSIONS" (MM)		
				(QD)INPUT/OUTPUT	(S) INPUT/OUTPUT	WIDTH	(LENGTH)	HEIGHT
3H15	15	*	3.9	*	*	5.50"(140)	8.87"(225)	3.00"(76)
3H15D	15	*	3.9	*	*	5.50"(140)	8.87"(225)	3.00"(76)
3H15D F	15	3x.01µF/3x.0047µF	3.9		✓	5.50"(140)	8.87"(225)	3.00"(76)
3H15D H	15	3x.01µF/3x.0047µF	3.9		✓	5.50"(140)	8.87"(225)	3.00"(76)
3H30	30	*	3.9	*	*	5.00"(127)	9.96"(253)	4.75"(121)
3H30D	30	*	3.9	*	*	5.00"(127)	9.96"(253)	4.75"(121)
3H30D H	30	3x.01µF/3x.0047µF	3.9		✓	5.00"(127)	9.96"(253)	4.75"(121)
3H45	45	*	3.9	*	*	5.00"(127)	12.96"(329)	4.75"(121)
3H45D	45	*	3.9	*	*	5.00"(127)	12.96"(329)	4.75"(121)
3H45D F	45	3x.01µF/3x.0047µF	3.9		✓	5.00"(127)	12.96"(329)	4.75"(121)
3H60	60	*	3.9	*	*	6.50"(165)	14.00"(356)	4.75"(121)
3H60 F	60	4x.01µF/4x.0047µF	5.2		✓	6.50"(165)	14.00"(356)	4.75"(121)
3H60D	60	*	3.9	*	*	6.50"(165)	14.00"(356)	4.75"(121)
3H60D F	60	3x.01µF/3x.0047µF	3.9		✓	6.50"(165)	14.00"(356)	4.75"(121)
3H60D H	60	3x.01µF/3x.0047µF	3.9		✓	6.50"(165)	14.00"(356)	4.75"(121)
3H100	100	*	3.9	*	*	7.50"(191)	17.50"(445)	5.75"(146)
3H100D	100	*	3.9	*	*	7.50"(191)	17.50"(445)	5.75"(146)
3H100D F	100	3x.01µF/3x.0047µF	3.9		✓	7.50"(191)	17.50"(445)	5.75"(146)
3H140D	140	*	3.9	*	*	7.50"(191)	20.50"(521)	5.75"(146)
3H140D F	140	3x.01µF/3x.0047µF	3.9		✓	7.50"(191)	20.50"(521)	5.75"(146)

*Contact factory for dimensions.

3H MECHANICAL OUTLINES (MM)



3H

HIGH VOLTAGE 3-PHASE POWER FILTER

SERIES	(A)	B	C	D	E	F	G	H	I	J	K
15 amps	5.50" (140)	8.87" (225)	3.00" (76)	8.06" (205)	3.38" (86)	1.06" (27)	1.13" (29)	2.75" (70)	1.00" (25)	4.75" (121)	N/A
30 amps	5.00" (127)	9.96" (253)	4.75" (121)	8.86" (225)	3.00" (76)	1.00" (25)	1.50" (38)	2.50" (64)	1.43" (36)	4.00" (102)	N/A
45 amps	5.00" (127)	12.96" (329)	4.75" (121)	11.98" (304)	3.00" (76)	1.00" (25)	1.50" (38)	2.50" (64)	1.43" (36)	4.00" (102)	N/A
60 amps	6.50" (165)	14.00" (356)	4.75" (121)	13.00" (330)	3.00" (76)	1.75" (44)	1.50" (38)	3.25" (83)	1.43" (36)	4.25" (108)	N/A
100 amps	7.50" (191)	17.50" (445)	5.75" (146)	16.24" (412)	5.00" (127)	1.25" (32)	1.25" (32)	1.25" (32)	3.50" (89)	6.37" (162)	N/A
140 amps	7.50" (191)	20.50" (521)	5.75" (146)	19.24" (489)	5.25" (133)	1.13" (29)	1.75" (44)	1.13" (29)	3.50" (89)	6.37" (162)	3.19" (81)

TYPICAL TOLERANCE: +/-0.02" (0.50MM)

TYPICAL INSERTION LOSS, dB (50/50 Ohm)

Amps	Freq (MHz)	Insertion Loss (dB)				
		0.15	0.5	1.0	10	30
15	CM (dB)	40	60	48	64	71
	DM (dB)	50	60	50	63	70
30	CM (dB)	40	60	48	64	71
	DM (dB)	50	60	50	63	70
45	CM (dB)	40	60	48	64	71
	DM (dB)	50	60	50	63	70
60	CM (dB)	40	60	48	64	71
	DM (dB)	50	60	50	63	70
100	CM (dB)	40	60	48	64	71
	DM (dB)	50	60	50	63	70
140	CM (dB)	40	60	48	64	71
	DM (dB)	50	60	50	63	70