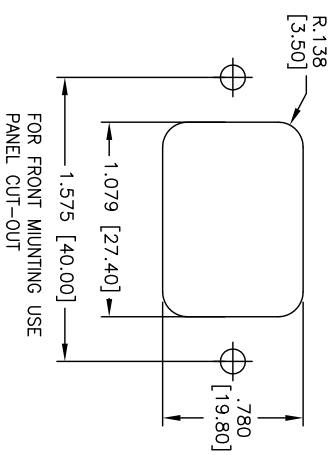
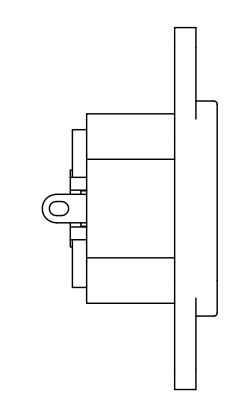
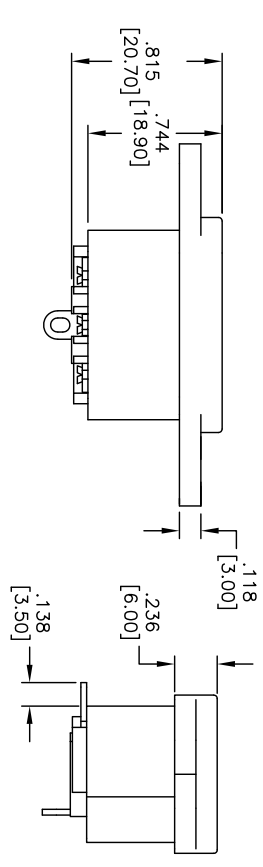
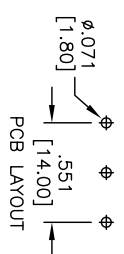
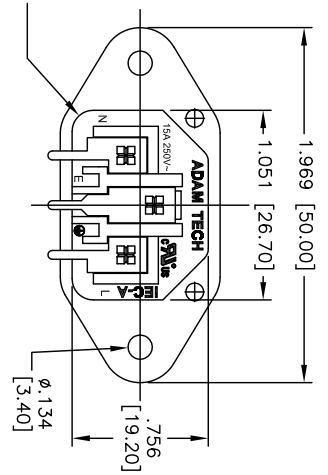
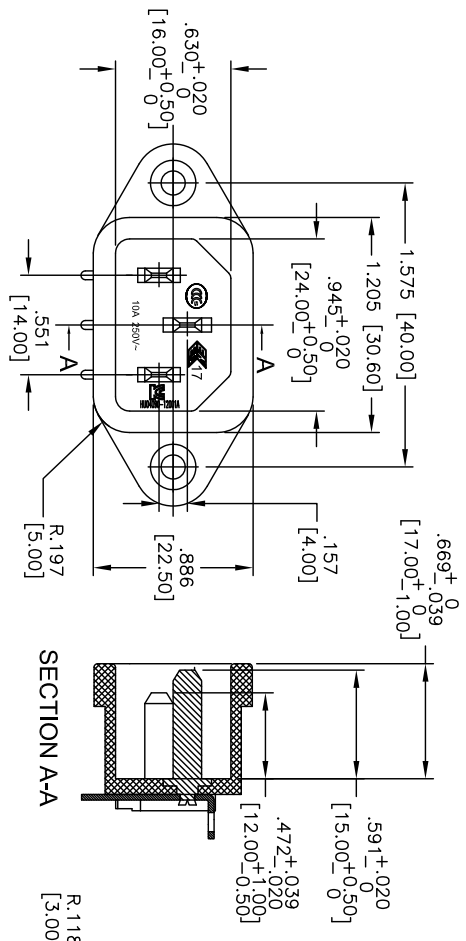


APPROVED: _____
 DATE: _____ TITLE: _____

Rev	AWO #	Description	Date	Appr
-		RELEASED	7/10/07	
A		REDRAWN	7/11/13	



SPECIFICATIONS:
 Material: PBT, rated UL 94V-0
 Insulator color: Black
 Contact: Copper Alloy, Tin Plated
 Pin: Copper Alloy, Nickel Plated
 Electrical:
 Rating: 15A @ 250V C-ULus
 10A @ 250V ENEC & CCC & KC
 Dielectric resistance: 100 Mohms min @ 500 VDC
 Insulation withstanding voltage: 3000 VAC for 1 minute
 Environmental:
 Lead free, RoHS compliant.

UNLESS OTHERWISE SPECIFIED
 ALL DIMENSIONS ARE INCHES [MM]
 TOLERANCES: EXCEPT AS NOTED

INCHES	HOLDS
.X ± .10	Ø.X ± .10
.XX ± .020	Ø.XX ± .015
.XXX ± .015	Ø.XXX ± .010

APPROVALS	DATE
DRAWN SS	7/10/07
CHECKED	
APPROVED	

ADAM TECH
 909 Rahway Avenue, Union, NJ 07083
 Phone: 908-687-5000 Fax: 908-687-5710

IEC MALE INLET, FLANGED PANEL MOUNT
 RIGHT ANGLE, PCB TAILS

SIZE PART NO. IEC-A-4
 REF: S00087C

SCALE: NTS SHEET 1 OF 1

REV. A

