



Screw-distributor block, Screw connection, Mounting type: Mounting rail TS 35/7.5 and mounting surface, Rated cross-section of input: 70 mm², Rated cross-section of output: 16 mm², Colour: Light grey

RAL: 9018

Business data

Article number	<u>1745.0</u>
Article name	SVB 175/3 LG
GTIN (EAN)	4044211143527
Packaging unit	1
Quantity unit	PC
Weight per piece (not including packaging)	379.4 g
Weight per piece (including packaging)	403 g
Unit of weight	G
Customs number	85369010
Country of origin	FR
Product description	Screw-type distribution block
Colour	Light grey

Technical data

Dimensions

Length	71 mm
Width	80 mm
Height	43 mm
Height TS 35/7.5	46 mm

Ratings

Rated voltage AC	1000 V
Rated voltage DC	1500 V
Rated current Cu	160 A
Input: rated cross section	70 mm ²
Output: rated cross section	16 mm ²
Rated impulse voltage	2,5 kV
Overvoltage category	III
Contamination degree	3

Technical data

Connection data

Connection principle	Screw connection
Connections	3 x 7
Number of inputs	3 x 1
Number of outputs	3 x 6
Input: wire cross-section rigid, min.	16 mm ²
Input: wire cross-section rigid, max.	70 mm ²
Input: wire cross-section stranded, min.	16 mm ²
Input: wire cross-section stranded, max.	50 mm ²
Input: wire cross-section stranded, with wire-endferrules, min.	16 mm ²
Input: wire cross-section stranded, with wire-endferrules, max.	50 mm ²
Input: wire cross-section rigid AWG, min.	8
Input: wire cross-section rigid AWG, max.	2/0
Input: wire cross-section stranded AWG, min.	8
Input: wire cross-section stranded AWG, max.	2/0
Input: wire cross-section stranded, with wire-endferrules AWG, min.	8
Input: wire cross-section stranded, with wire-endferrules AWG, max.	2/0
Input: diameter	12 mm
Input: stripping length	16 mm
Input: screw head	Inner hex (Allen)
Input: screw threading	M 10
Input: torque, min.	6 Nm
Input: torque, max.	10 Nm
Output: wire cross-section rigid, min.	2.5 mm ²
Output: wire cross-section rigid, max.	16 mm ²
Output: wire cross-section stranded, min.	2.5 mm ²
Output: wire cross-section stranded, max.	10 mm ²
Output: wire cross-section stranded, with wire-end ferrules, min.	2.5 mm ²
Output: wire cross-section stranded, with wire-end ferrules, max.	10 mm ²
Output: wire cross-section rigid AWG, min.	14
Output: wire cross-section rigid AWG, max.	4
Output: wire cross-section stranded AWG, min.	14
Output: wire cross-section stranded AWG, max.	4
Output: wire cross-section stranded, with wire-end ferrules AWG, min.	14
Output: wire cross-section stranded, with wire-end ferrules AWG, max.	4
Output: diameter	6.5 mm
Output: stripping length	12 mm

Technical data

Materials

Insulation housing	Polyamide 6.6
Flammability class UL 94	V-0
Working temperature, min.	-40 °C
Working temperature, max.	120 °C

Further technical data

Mounting type	Mounting rail TS 35/7.5 and mounting surface
Short-circuit current resistance IPK (peak value)	30 kA
Short-circuit current resistance ICW over 1 s	11 kA
SCCR rating	100
Req. Series fuse class J	175 A

Environmental Product Compliance

REACH Conform	No
REACH Reference date	2022-06-10
REACH Candidate Substance Note	No
REACH CAS 1 Substance	LEAD
REACH CAS 1 Percent minimal	0.1 %
REACH CAS 1 Percent maximum	4 %
REACH CAS 1 Number	7439-92-1
RoHS Conform	yes
RoHS Exception rule	6c

Approvals

Standards and regulations

EAC approval	TR ZU 004/2011
--------------	----------------

EAC approval granted	yes
----------------------	-----

cUL Recognized

cUL approval	C22.2 No 158
--------------	--------------

cUL Usegroup B: rated voltage	600 V
-------------------------------	-------

cUL Usegroup B: rated current	175 A
-------------------------------	-------

cUL Usegroup C: rated voltage	600 V
-------------------------------	-------

cUL Usegroup C: rated current	175 A
-------------------------------	-------

cUL input: wire cross-section AWG, min.	8
-----------------------------------------	---

cUL input: wire cross-section AWG, max.	2/0
-----------------------------------------	-----

cUL output: wire cross-section AWG, min.	14
------------------------------------------	----

cUL output: wire cross-section AWG, max.	4
------------------------------------------	---

cUL torque input	4 Nm
------------------	------

cUL torque output	2 Nm
-------------------	------

cUL wire material	Cu
-------------------	----

cUL Recognized	1
----------------	---

UL Recognized

UL approval	UL 1059
-------------	---------

UL Usegroup B: rated voltage	600 V
------------------------------	-------

UL Usegroup B: rated current	175 A
------------------------------	-------

UL Usegroup C: rated voltage	600 V
------------------------------	-------

UL Usegroup C: rated current	175 A
------------------------------	-------

UL input: wire cross-section AWG, min.	8
----------------------------------------	---

UL input: wire cross-section AWG, max.	2/0
----------------------------------------	-----

UL output: wire cross-section AWG, min.	14
-----------------------------------------	----

UL output: wire cross-section AWG, max.	4
-----------------------------------------	---

UL torque input	35.5 Lb In.
-----------------	-------------

UL torque output	17.5 Lb In.
------------------	-------------

UL wire material	Cu
------------------	----

UL factory wiring	1
-------------------	---

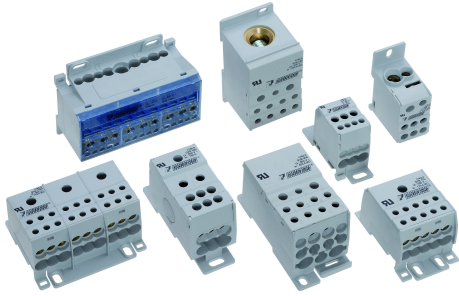
UL field wiring	1
-----------------	---

UL Recognized	1
---------------	---

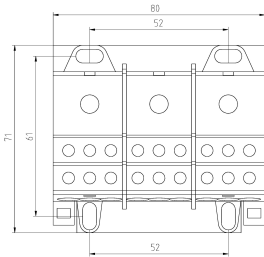
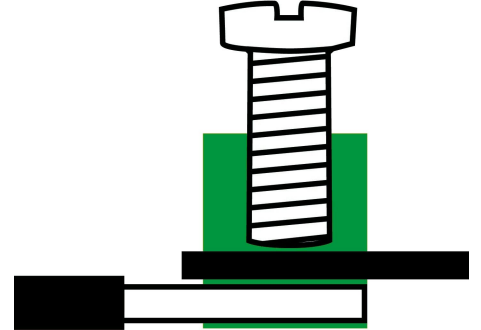
Data sheet

1745.0 SVB 175/3 LG

Media



EAC



C **AV** [®] US

Accessories

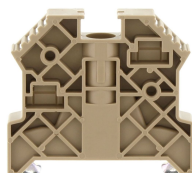
Cover

Wire-end ferrules, Max. wire cross-section: 1.5 on roll mm², Length: 14 mm, Length of copper pipe: 8 mm, Colour: Black



Article number	Article name	GTIN (EAN)	Packaging unit
<u>2882.0</u>	H 1,5/14 D-B Rolle BK (5.000 St.)	4044211056070	1 ST

End stop



End stop, Mounting type: Mounting rail TS 35/7.5, Width: 9.5 mm, Colour: Beige

Article number	Article name	GTIN (EAN)	Packaging unit
<u>2828.0</u>	ES 35/K/ST BG	4044211055547	50

Allen key socket wrench



Inner hex key with bare blade

Article number	Article name	GTIN (EAN)	Packaging unit
<u>2773.0</u>	ISKS 8	4044211055035	1 ST