



Screw-distributor block, Screw connection, Mounting type: Mounting rail TS 35/7.5 and mounting surface, Rated cross-section of input: 6, 16 and 35 mm<sup>2</sup>, Rated cross-section of output: 6, 16 and 35mm<sup>2</sup>, Colour: Light grey

**RAL:** 9018

### Business data

Article number	1747.0
Article name	SVB 125/4 LG
GTIN (EAN)	4044211143541
Packaging unit	1
Quantity unit	PC
Weight per piece (not including packaging)	311.8 g
Weight per piece (including packaging)	343 g
Unit of weight	G
Customs number	85369010
Country of origin	FR
Product description	Screw-type distribution block
Colour	Light grey

---

### Technical data

---

#### Dimensions

Length	74 mm
Width	98 mm
Height	50 mm
Height TS 35/7.5	53 mm

#### Ratings

Rated voltage AC	690 V
Rated voltage DC	690 V
Rated current Cu	160 A
Input A: rated cross-section	35 mm <sup>2</sup>
Output A: rated cross-section	35 mm <sup>2</sup>
Output B: rated cross-section	6 mm <sup>2</sup>
Input B: rated cross-section	6 mm <sup>2</sup>
Output C: rated cross-section	16 mm <sup>2</sup>
Input C: rated cross-section	16 mm <sup>2</sup>
Rated impulse voltage	2,5 kV
Overvoltage category	III
Contamination degree	3

### Technical data

#### Connection data

Connection principle	Screw connection
Connections	3 x 8
Number of inputs A	3 x 1
Number of inputs B	3 x 5
Number of inputs C	3 x 2
Number of outputs A	1
Number of outputs B	4
Number of outputs C	6
Special connection	neutral busbar mm
Input A: wire cross-section rigid, min.	6 mm <sup>2</sup>
Input A: wire cross-section rigid, max.	35 mm <sup>2</sup>
Input A: wire cross-section stranded, min.	6 mm <sup>2</sup>
Input A: wire cross-section stranded, max.	25 mm <sup>2</sup>
Input A: wire cross-section, stranded with wire-endferrules, min.	6 mm <sup>2</sup>
Input A: wire cross-section, stranded with wire-endferrules, max.	25 mm <sup>2</sup>
Input A: wire cross-section AWG, min.	9,5
Input A: wire cross-section AWG, max.	2
Input A: diameter	9 mm <sup>2</sup>
Input A: stripping length	18 mm
Input A: screw head	Slotted / cross recess
Input A: screw threading	M 5
Input A: torque, min.	1.5 Nm
Input A: torque, max.	3 Nm
Input B: wire cross-section rigid, min.	1.5 mm <sup>2</sup>
Input B: wire cross-section rigid, max.	6 mm <sup>2</sup>
Input B: wire cross-section stranded, min.	1.5 mm <sup>2</sup>
Input B: wire cross-section stranded, max.	6 mm <sup>2</sup>
Input B: wire cross-section, stranded with wire-end ferrules, min.	1.5 mm <sup>2</sup>
Input B: wire cross-section stranded with wire-end ferrules, max.	6 mm <sup>2</sup>
Input B: diameter	5 mm <sup>2</sup>
Input B: stripping length	12 mm
Input B: screw head	Slotted / cross recess
Input B: screw threading	M 4
Input B: torque, min.	0.8 Nm
Input B: torque, max.	1.5 Nm
Input C: wire cross-section rigid, min.	4 mm <sup>2</sup>

### Technical data

#### Materials

Insulation housing	Polyamide 6.6
Flammability class UL 94	V-0
Working temperature, min.	-40 °C
Working temperature, max.	120 °C

#### Further technical data

Mounting type	Mounting rail TS 35/7.5 and mounting surface
Short-circuit current resistance IPK (peak value)	30 kA
Short-circuit current resistance ICW over 1 s	11,8 kA

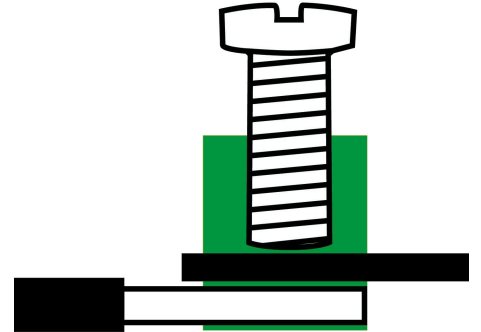
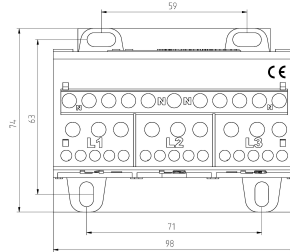
#### Environmental Product Compliance

REACH Conform	No
REACH Reference date	2022-06-10
REACH Candidate Substance Note	No
REACH CAS 1 Substance	LEAD
REACH CAS 1 Percent minimal	0.1 %
REACH CAS 1 Percent maximum	4 %
REACH CAS 1 Number	7439-92-1
RoHS Conform	yes
RoHS Exception rule	6c

# Data sheet

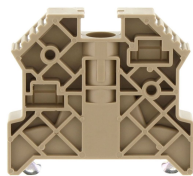
## 1747.0 SVB 125/4 LG

### Media



### Accessories

#### End stop



End stop, Mounting type: Mounting rail TS 35/7.5, Width: 9.5 mm, Colour: Beige

Article number	Article name	GTIN (EAN)	Packaging unit
<u>2828.0</u>	ES 35/K/ST BG	4044211055547	50

#### Allen key socket wrench



Inner hex key with bare blade

Article number	Article name	GTIN (EAN)	Packaging unit
<u>2818.0</u>	ISKS 5	4044211055448	1 ST

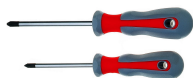
#### Screwdriver

Screwdriver with bare blade, Colour:



Article number	Article name	GTIN (EAN)	Packaging unit
<u>2290.0</u>	SDK 2,0x100	4044211050887	1 ST

Screwdriver with bare blade, Colour:



Article number	Article name	GTIN (EAN)	Packaging unit
<u>2289.0</u>	SDK 1,0x80	4044211050870	1 ST