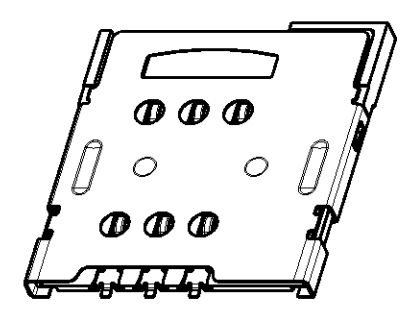
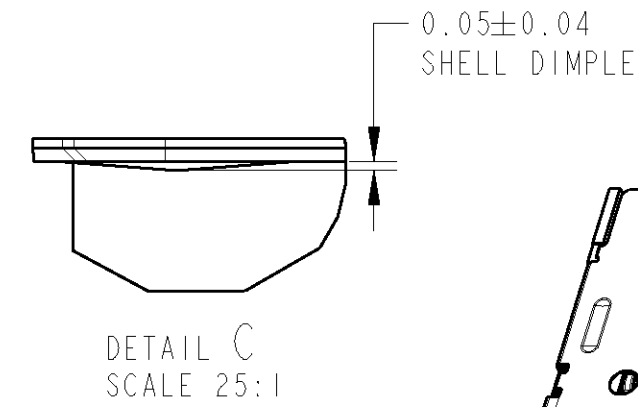
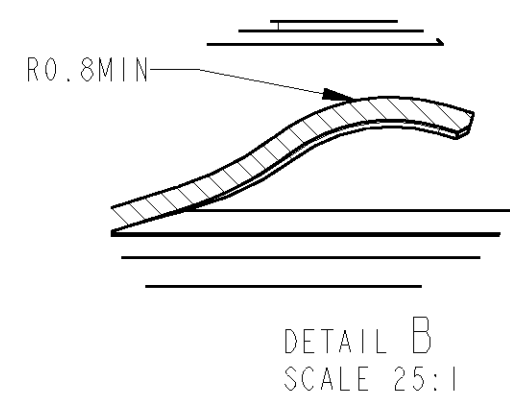
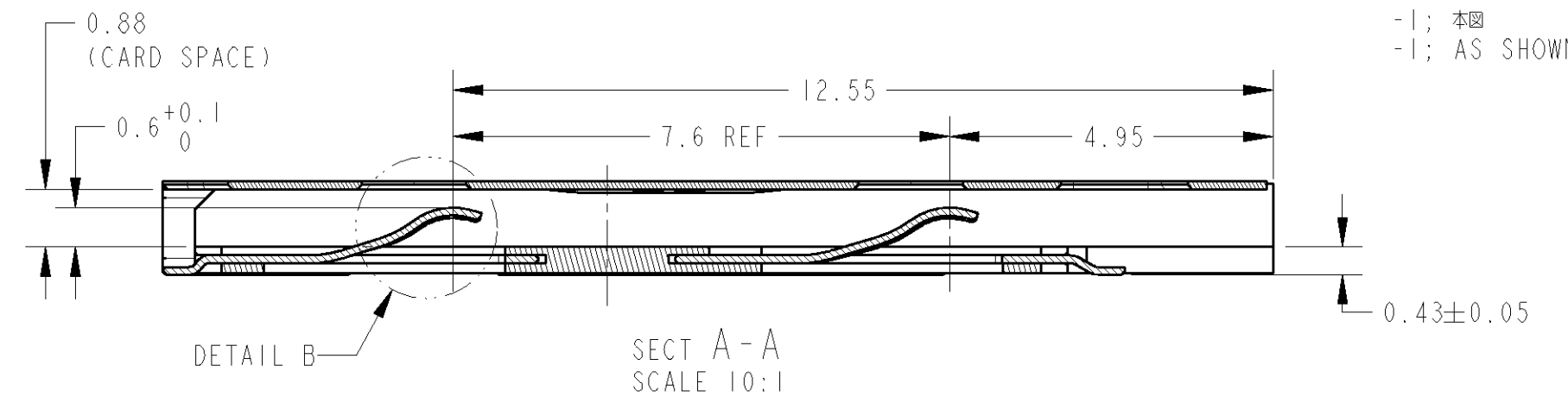
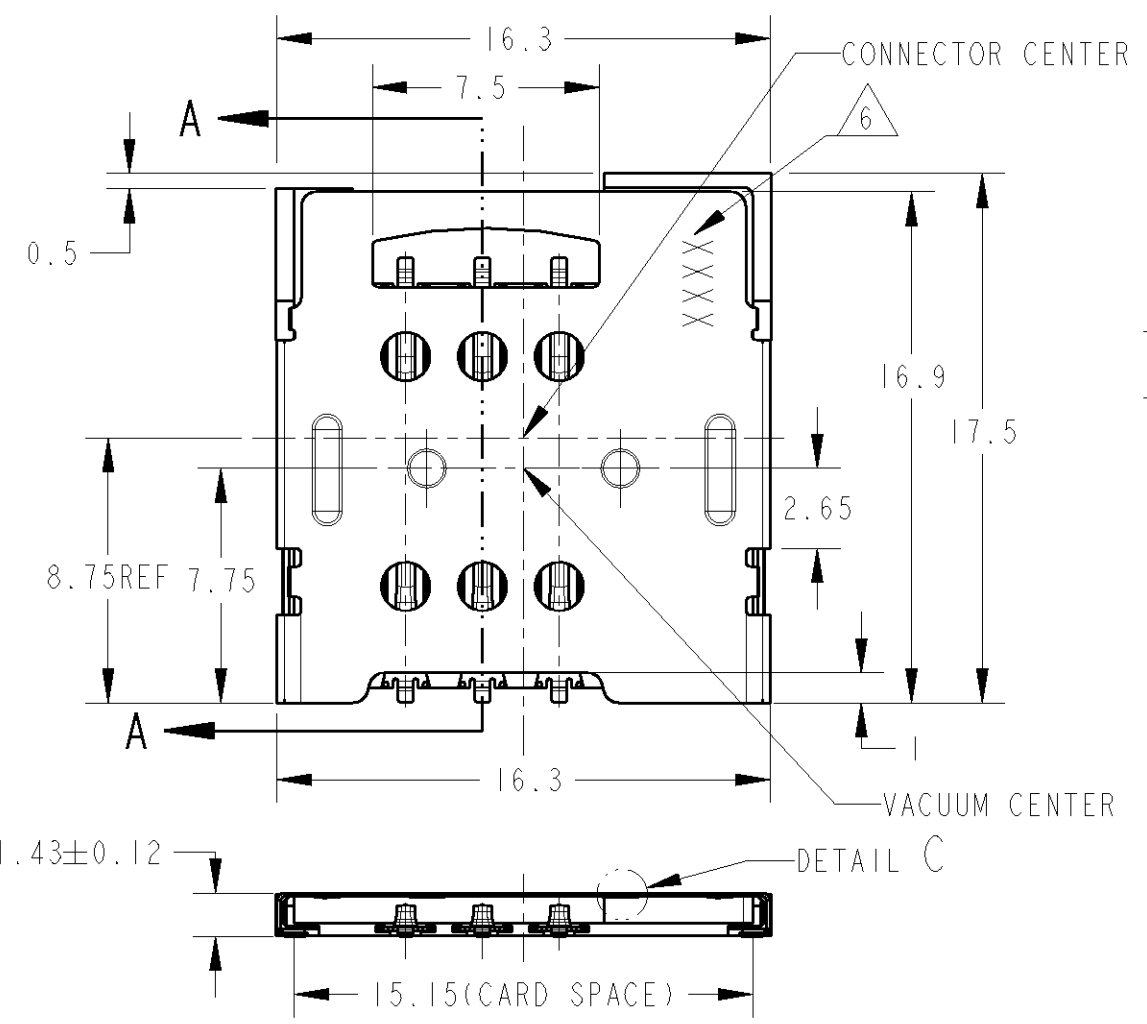


THIS DRAWING IS UNPUBLISHED. RELEASED FOR PUBLICATION 2006  
 © COPYRIGHT 2006 BY TYCO ELECTRONICS CORPORATION. ALL RIGHTS RESERVED.

本図面に記載された内容はタイコ エレクトロニクス アンパ (株) の所有する情報を開示しております。  
 無断で複写・配布する事を禁じます。 特許出願中

LOC	DIST	REVISIONS					
		P	LTR	DESCRIPTION	DATE	DWN	APVD
J	-	A		RELEASED	23MAY2007	M.O	Y.N
		AI		REVISED	19JUN2007	M.O	Y.N
		B		REVISED	22AUG2007	M.O	Y.N
		C		REVISED	08JUN2008	M.O	Y.N



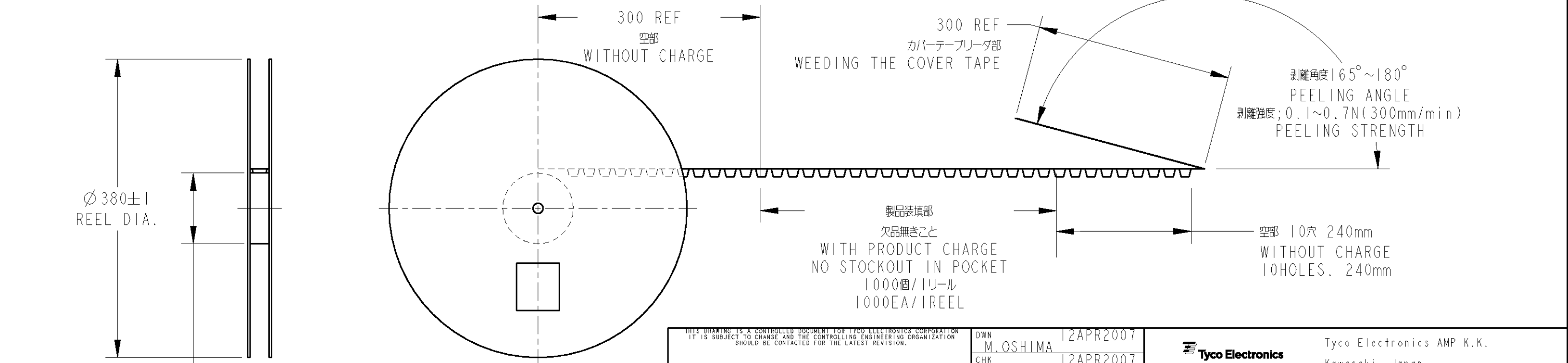
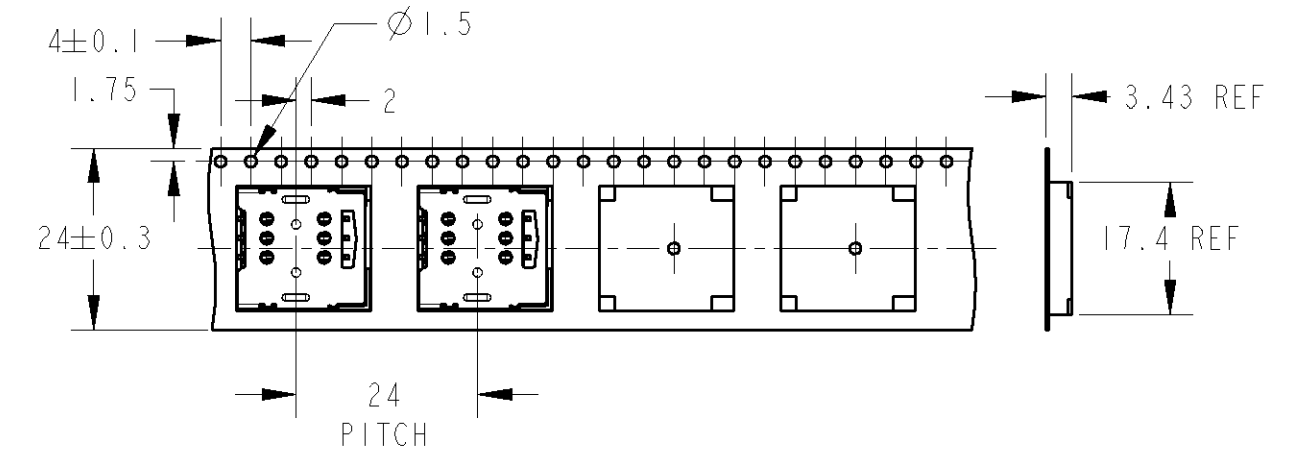
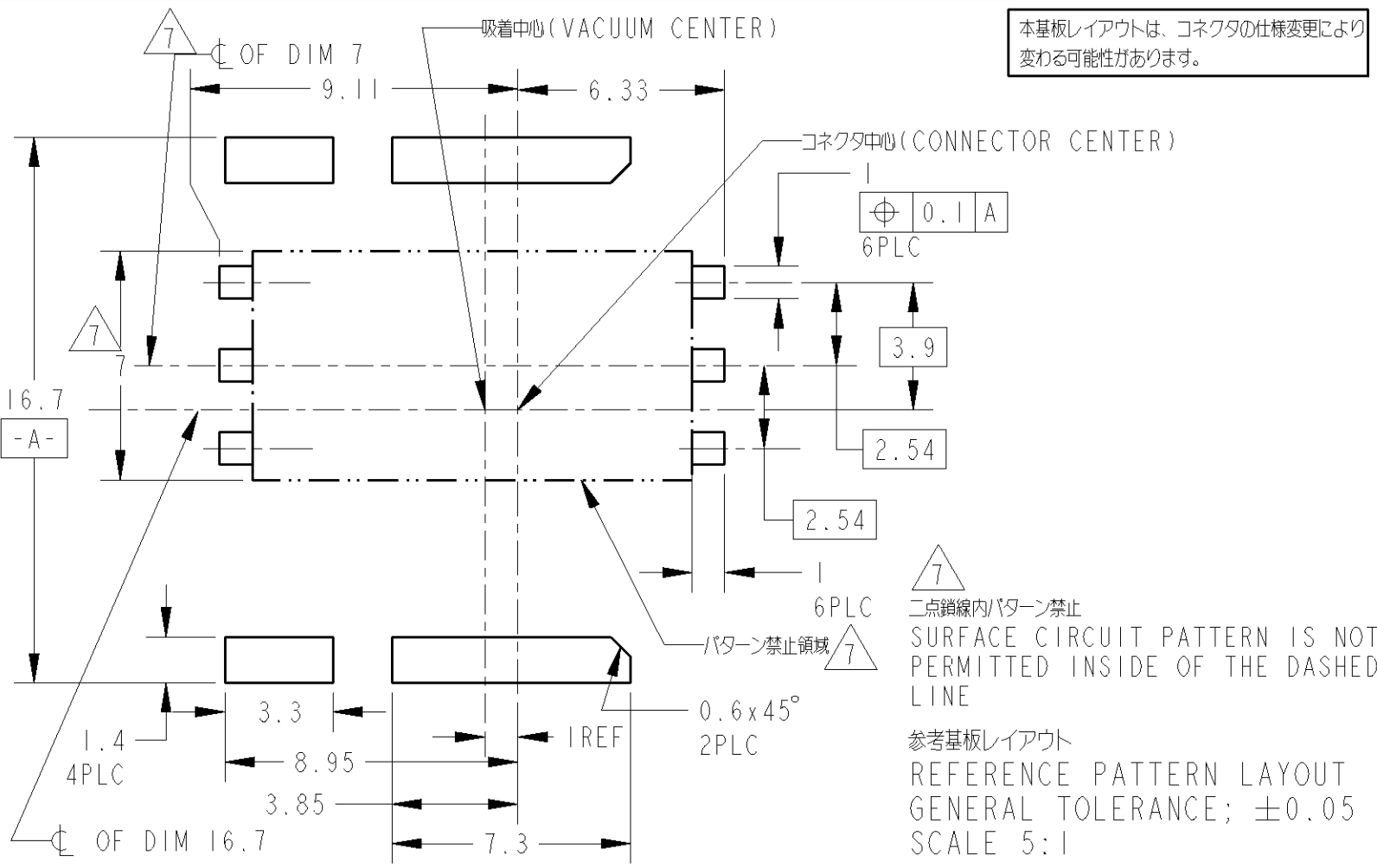
- 1 材料  
 CLIP; ステンレス  $\pm 0.12$   
 全面Ni下地  $1.3\mu\text{m}$ 以上の上にスズめっき  $1\mu\text{m}$ 以上  
 CONTACT; 銅合金  $\pm 0.12$   
 全面Ni下地  $1.3\mu\text{m}$ 以上, 接点部Auめっき  $= 0.4\mu\text{m}$ 以上, 半田付け部Auめっき  $= 0.05 \sim 0.13\mu\text{m}$   
 HOUSING; LCP
- 2 設計推奨半田厚みは  $100\mu\text{m}$ 以上, 推奨半田付け範囲は参考半田パターンに対して100%とする
- 3 部品保存期間; 常温常湿で6ヶ月以内
- 4 ドライバック及びベーキングは不要
- 5 コプラナリティ;  $0.1\text{MAX.}$
- 6 テートコード

- 1 MATERIAL  
 CLIP; STAINLESS  $\pm 0.12$   
 Ni;  $1.3\mu\text{m}$ MIN. OVER TIN PL.  
 CONTACT; COPPER ALLOY  $\pm 0.12$   
 Ni;  $1.3\mu\text{m}$ MIN. CONTACT POINT;  $0.4\mu\text{m}$ MIN. TINE;  $0.05\mu\text{m}$ MIN.  
 HOUSING; LCP
- 2 RECOMMENDED SOLDERING THICKNESS;  $100\mu\text{m}$  MIN.  
 RECOMMENDED SOLDERING AREA; 100% OF REFERENCE LAYOUT PATTERN
- 3 PRODUCT RETENTION PERIOD; 6 MONTHS MAX AT ROOM TEMPERATURE AND HUMIDITY
- 4 NO DRY PACKING AND BAKING
- 5 COPLANARITY;  $0.1\text{MAX.}$
- 6 DATE CODE

THIS DRAWING IS A CONTROLLED DOCUMENT FOR TYCO ELECTRONICS CORPORATION IT IS SUBJECT TO CHANGE AND THE CONTROLLING ENGINEERING ORGANIZATION SHOULD BE CONTACTED FOR THE LATEST REVISION.		DWN M. OSHIMA 12APR2007	Tyco Electronics Tyco Electronics AMP K.K. Kawasaki, Japan	
DIMENSIONS: 単位: 概 mm		CHK C. OHASHI 12APR2007	NAME 名称 SUPER LOW PROFILE SIM WITH FULLCLIP HI.43 / HI.55 MAX	
TOLERANCES UNLESS OTHERWISE SPECIFIED: 一般公差 $\pm 0.15$ 0-PLC $\pm$ 1-PLC $\pm 0.5$ 2-PLC $\pm 0.13$ 3-PLC $\pm 0.013$ 4-PLC $\pm 0.0001$ ANGLES $\pm$		APVD Y. NAKAZAWA 12APR2007	DRAWING NO 番号 108-78472	
MATERIAL 材料		FINISH 仕上	APPLICATION SPEC 取付適用規格	RESTRICTED TO
		WEIGHT (計算値) 0.45g	SIZE A3	CAGE CODE 00779
		DRAWING NO 番号 C-1981898		SCALE 尺度 4:1
		CUSTOMER DRAWING		SHEET 1 OF 2
				REV C

THIS DRAWING IS UNPUBLISHED. RELEASED FOR PUBLICATION 2006  
 © COPYRIGHT 2006 BY TYCO ELECTRONICS CORPORATION. ALL RIGHTS RESERVED.

LOC	DIST	REVISIONS					
		P	LTR	DESCRIPTION	DATE	DWN	APVD
J	-	-	-	SEE SHEET 1	-	-	-



THIS DRAWING IS A CONTROLLED DOCUMENT FOR TYCO ELECTRONICS CORPORATION IT IS SUBJECT TO CHANGE AND THE CONTROLLING ENGINEERING ORGANIZATION SHOULD BE CONTACTED FOR THE LATEST REVISION.		DWN M. OSHIMA 12APR2007 CHK C. OHASHI 12APR2007 APVD Y. NAKAZAWA 12APR2007		Tyco Electronics Tyco Electronics AMP K.K. Kawasaki, Japan	
DIMENSIONS: mm		TOLERANCES UNLESS OTHERWISE SPECIFIED: 0 PLC ±- 1 PLC ±0.5 2 PLC ±0.13 3 PLC ±0.013 4 PLC ±0.0001 ANGLES ±-		NAME SUPER LOW PROFILE SIM WITH FULLCLIP HI.43 / HI.55 MAX	
MATERIAL -		FINISH -		WEIGHT 0.45g	
CUSTOMER DRAWING		SCALE 4:1		SHEET 2 OF 2 REV C	