

- NOTES:
1. PACKAGING: PARTS TO BE PACKAGED IN TAPE & REEL, SEE DRAWING SD-91915-003.
  2. SEE PRODUCT SPECIFICATION PS-91915-001.
  3. THIS IS A CUSTOMER SPECIFIC SYMBOL.
  4. TAILS ON EACH SIDE OF CONNECTOR TO LIE WITHIN 0.12mm OF EACH OTHER.

ITEM	COMPONENT	QTY	MATERIAL
1	HOUSING	1	LCP E130i UL-94 V-0, COLOUR BLACK RoHS & LEAD FREE COMPLIANT
2	TERMINAL	8	0.15 PHOSPHOR BRONZE Au FLASH OVER Pd/Ni Sn ON SMT TAILS

SYMBOLS		THIS DRAWING CONTAINS INFORMATION THAT IS PROPRIETARY TO MOLEX ELECTRONIC TECHNOLOGIES, LLC AND SHOULD NOT BE USED WITHOUT WRITTEN PERMISSION	
▽ = 0	mm	SCALE	5:1
▽ = 0	GENERAL TOLERANCES (UNLESS SPECIFIED)		CURRENT REV DESC: ADDED DETAIL "C" VIEW
▽ = 0	ANGULAR TOL ± 2.0°		VIEW
▽ = 3	4 PLACES ±	EC NO: 641315	2020/07/10
▽ = 0	3 PLACES ±	DRWN: AKABADI	2020/07/14
▽ = 0	2 PLACES ± 0.05	CHK'D: MMEANEY	2020/07/14
▽ = 0	1 PLACE ± 0.1	APPR: MMEANEY	2020/07/14
▽ = 0	0 PLACES ±	INITIAL REVISION:	
▽ = 0	DRAFT WHERE APPLICABLE MUST REMAIN WITHIN DIMENSIONS	DRWN: DCARTON	2007/02/14
▽ = 0		APPR: EFOLAN	2007/02/23
THIRD ANGLE PROJECTION		DRAWING	SERIES
A2-SIZE		91915	
MATERIAL NUMBER		CUSTOMER	SHEET NUMBER
919150001			1 OF 1

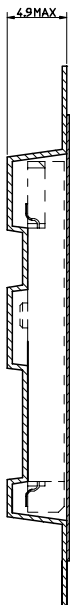
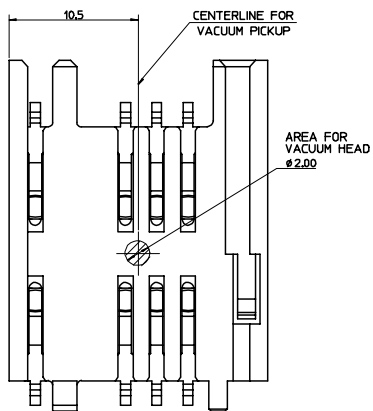
**molex**

2.54 PITCH  
SIM CONNECTOR

PRODUCT CUSTOMER DRAWING

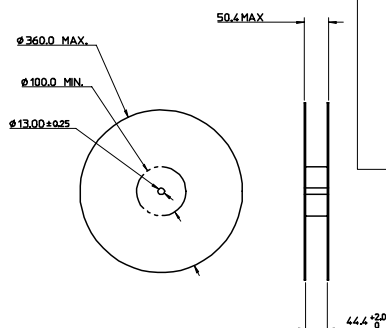
DOCUMENT NUMBER	DOC TYPE	DOC PART	REVISION
SD-91915-001	PSD	001	C

COMPONENT PICK UP DETAIL



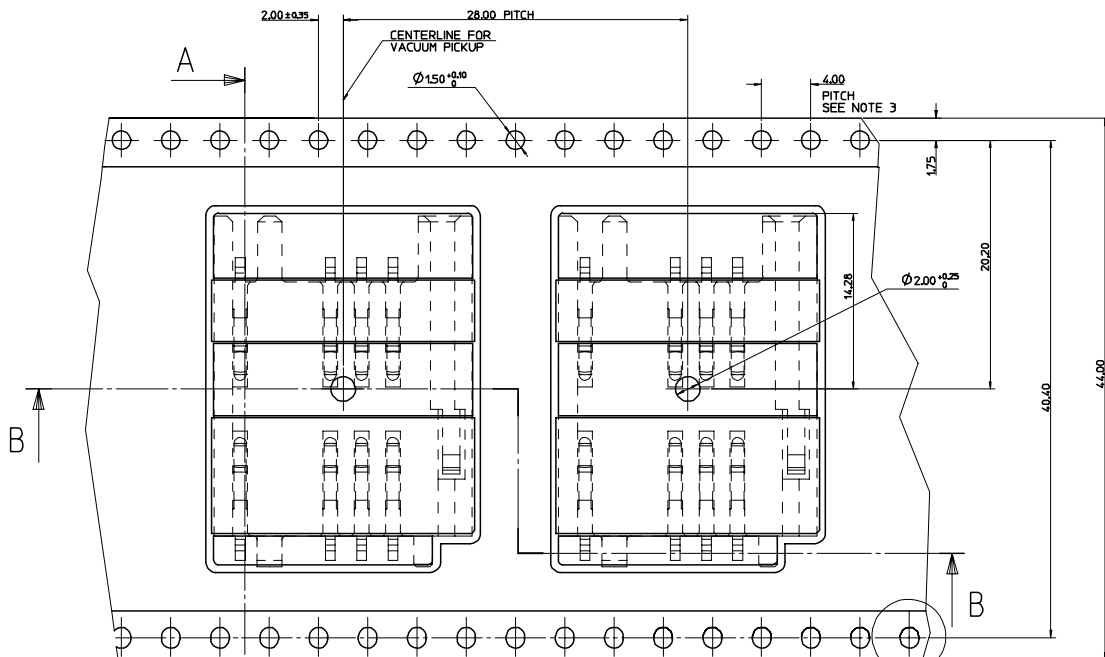
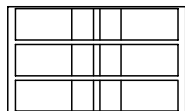
A-A

REFERENCE ONLY



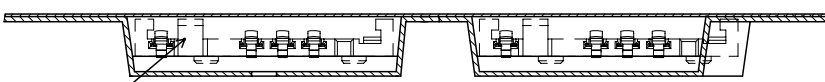
REEL DIMENSIONS  
NOT TO SCALE

15001 PIECES ON A REEL  
(3) REELS / CARDBOARD BOX  
(15001) PIECES / CARDBOARD BOX - SUBJECT TO CHANGE



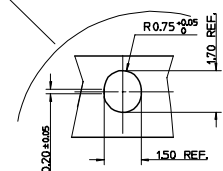
A

DIRECTION OF UNREELING →



B-B

NOTE 4



SCALE 10:1

NOTES:

- MATERIAL:  
CARRIER TAPE: VOLUME CONDUCTIVE POLYSTYRENE, 0.40 REF THICK, BLACK  
COVER TAPE: COLD SEAL POLYESTER, 0.06 REF THICK, TRANSPARENT
- PEEL FORCE OF THE COVER TAPE IS 0.1N TO 1.0N  
AT MAXIMUM PEEL SPEED OF 300mm/min. ±10%
- PITCH TOLERANCE OVER ANY 10 PITCHES ±0.2
- TAPE & REEL PACKAGING FOR PART NUMBERS 919150001 & 919150002.

TO CUSTOMER ASSEMBLY MACHINE →



MOLEX REEL

ORIGINAL RELEASE EC NO: E2006-110 DRAWING/CARTON 2007/02/14 CHKD: APPR:	QUALITY SYMBOLS ▼ - 0 ∇ - 0	GENERAL TOLERANCES (UNLESS SPECIFIED)		SCALE 4:1	DESIGN UNITS METRIC	THIRD ANGLE PROJECTION REVISE ON CAD ONLY BLISTER PACKAGING SIM CONNECTOR MOLEX MOLEX INCORPORATED
				MM ONLY		
		4 PLACES ± --- ± --- 3 PLACES ± --- ± --- 2 PLACES ± 0.10 ± --- 1 PLACE ± 0.2 ± ---		DRAWN BY DATE DMAHER 2006/11/28 CHECKED BY DATE FDUGGAN 2006/11/28		
		ANGULAR ± 2 ° DRAFT WHERE APPLICABLE MUST REMAIN WITHIN DIMENSIONS		APPROVED BY DATE EFOLAN 2006/11/28		
				MATERIAL NO. NOTE 4	DOCUMENT NO. SD-91915-003	SHEET NO. 1 OF 1
				THIS DRAWING CONTAINS INFORMATION THAT IS PROPRIETARY TO MOLEX INCORPORATED AND SHOULD NOT BE USED WITHOUT WRITTEN PERMISSION		