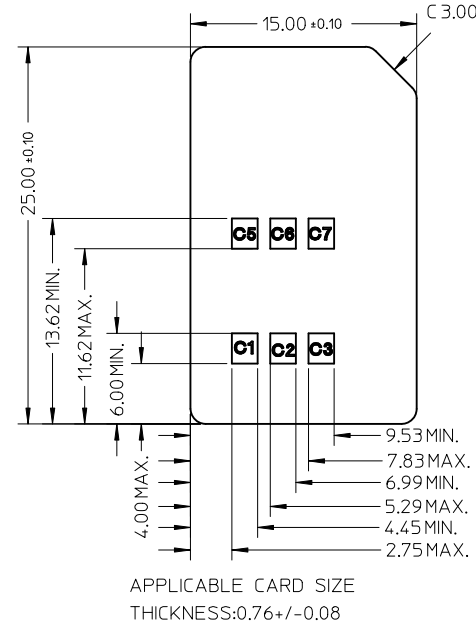
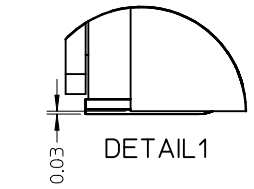
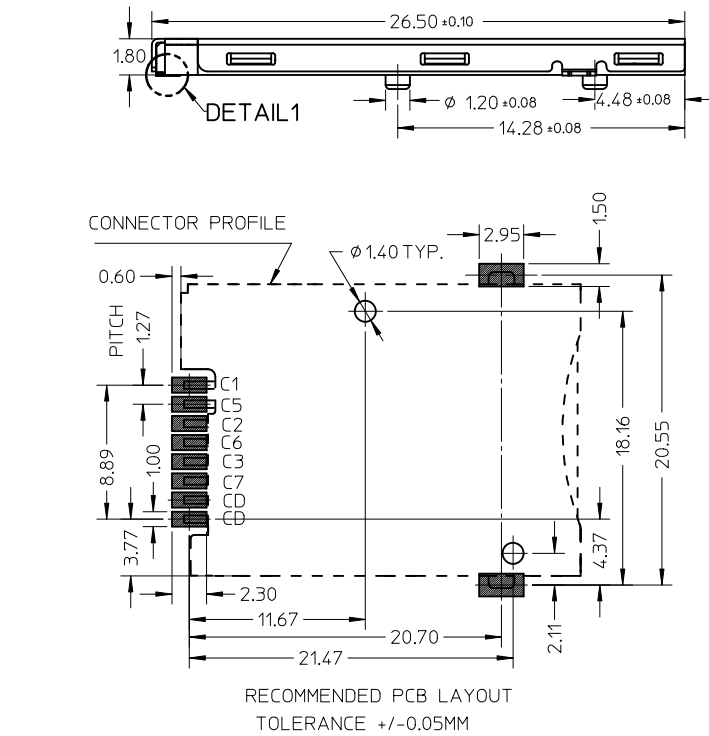


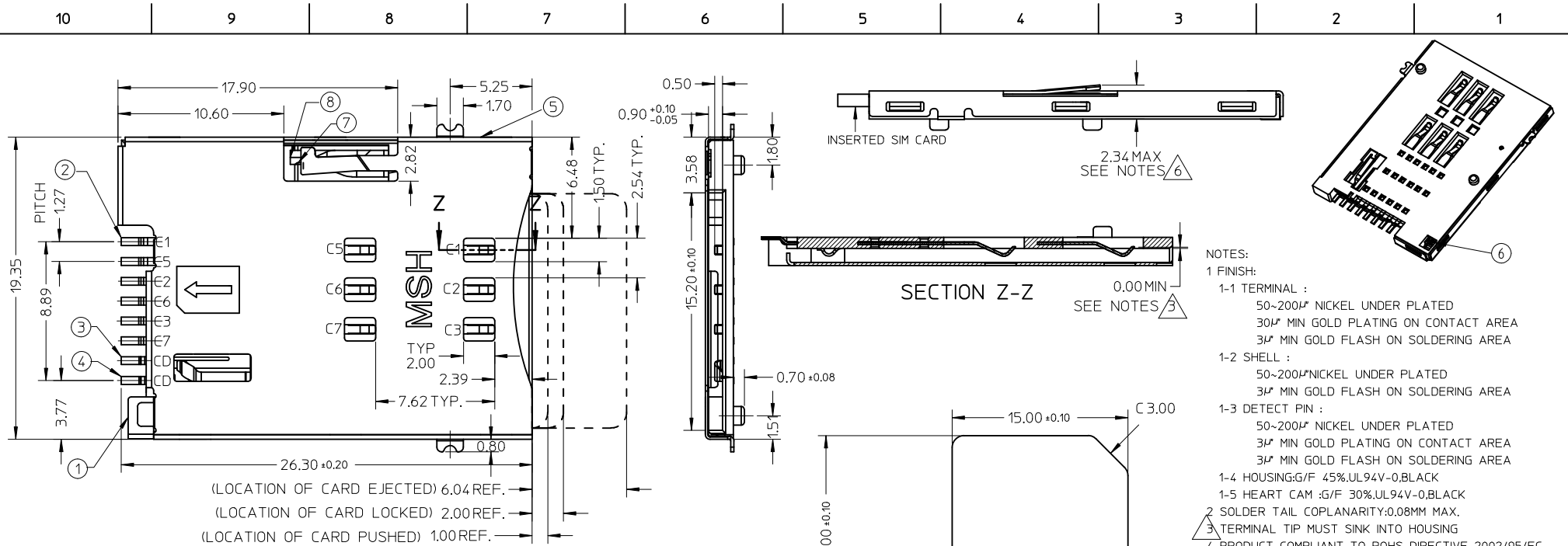
- NOTES:
 1 FINISH:
 1-1 TERMINAL :
 50-200μ NICKEL UNDER PLATED
 30μ MIN GOLD PLATING ON CONTACT AREA
 3μ MIN GOLD FLASH ON SOLDERING AREA
 1-2 SHELL :
 50-200μ NICKEL UNDER PLATED
 3μ MIN GOLD FLASH ON SOLDERING AREA
 1-3 DETECT PIN :
 50-200μ NICKEL UNDER PLATED
 3μ MIN GOLD PLATING ON CONTACT AREA
 3μ MIN GOLD FLASH ON SOLDERING AREA
 1-4 HOUSING:G/F 45%.UL94V-0.BLACK
 1-5 HEART CAM :G/F 30%.UL94V-0.BLACK
 2 SOLDER TAIL COPLANARITY:0.08MM MAX.
 3 TERMINAL TIP MUST SINK INTO HOUSING
 4 PRODUCT COMPLIANT TO ROHS DIRECTIVE 2002/95/EC AND ELV DIRECTIVE 2000/53/EC
 5 DETECT SWITCH: INSERT CARD=ON (NORMAL=OPEN)
 6 SPRING RISE UP DURING PUSH-PUSH PERIOD



NO.	DESCRIPTION	Q'TY	MATERIAL
1	HOUSING	1	HIGH TEMPERATURE THERMOPLASTIC
2	TERMINAL	6	COPPER ALLOY
3	DETECT PIN LOWER	1	COPPER ALLOY
4	DETECT PIN UPPER	1	COPPER ALLOY
5	SHELL	1	STAINLESS STEEL
6	COIL SPRING	1	PIANO WIRE
7	HEART CAM	1	NYLON
8	CAM PIN	1	STAINLESS STEEL



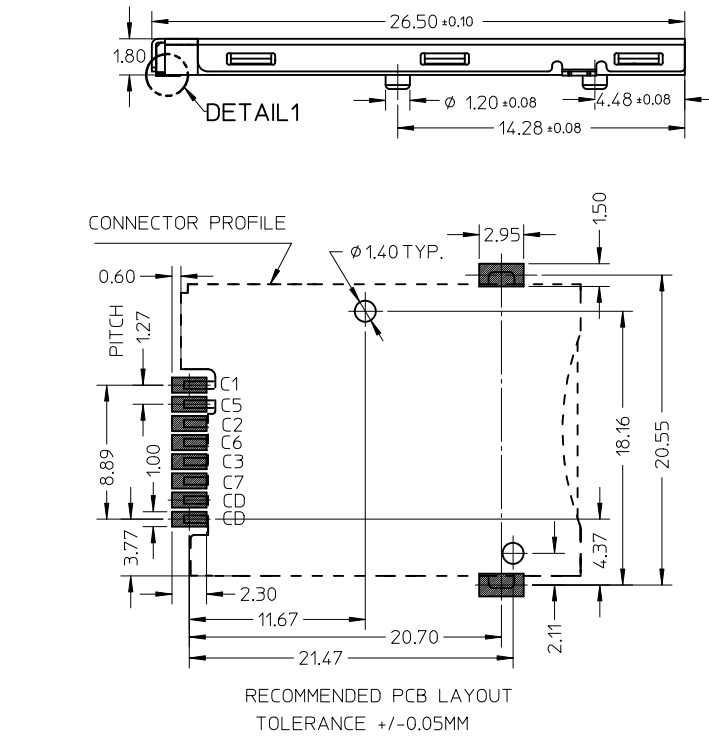
NEW DIM TOL CTRL EC NO: S2011-0880 DRW:KHLIM 2011/04/13 CHKD:JIAN02 2011/04/15 APPR:SKTOH 2011/05/27	QUALITY SYMBOLS F _A =0 F _C =0 F _P =0	GENERAL TOLERANCES (UNLESS SPECIFIED)	DIMENSION STYLE MM ONLY		SCALE NTS	DESIGN UNITS METRIC	THIRD ANGLE PROJECTION
		4 PLACES ± --- ± ---	mm	INCH	DRAWN BY LHSHEN	DATE 2007/07/09	TITLE PUSH PUSH 6 PINS SIM WITH DETECT PIN&POST SALES DRAWING
		3 PLACES ± --- ± ---			CHECKED BY XUXIANG	DATE 2007/08/30	MOLEX INCORPORATED
		2 PLACES ± 0.15 ± ---			APPROVED BY HWWANG	DATE 2007/08/30	
1 PLACE ± --- ± ---			MATERIAL NO. 475531001		DOCUMENT NO. SD-47553-101	SHEET NO. 1 OF 1	
DRAFT WHERE APPLICABLE MUST REMAIN WITHIN DIMENSIONS		THIS DRAWING CONTAINS INFORMATION THAT IS PROPRIETARY TO MOLEX INCORPORATED AND SHOULD NOT BE USED WITHOUT WRITTEN PERMISSION					



- NOTES:
- 1 FINISH:
- 1-1 TERMINAL :
 - 50-200μ NICKEL UNDER PLATED
 - 30μ MIN GOLD PLATING ON CONTACT AREA
 - 3μ MIN GOLD FLASH ON SOLDERING AREA
 - 1-2 SHELL :
 - 50-200μ NICKEL UNDER PLATED
 - 3μ MIN GOLD FLASH ON SOLDERING AREA
 - 1-3 DETECT PIN :
 - 50-200μ NICKEL UNDER PLATED
 - 3μ MIN GOLD PLATING ON CONTACT AREA
 - 3μ MIN GOLD FLASH ON SOLDERING AREA
 - 1-4 HOUSING:G/F 45%.UL94V-0.BLACK
 - 1-5 HEART CAM :G/F 30%.UL94V-0.BLACK
 - 2 SOLDER TAIL COPLANARITY:0.08MM MAX.
 - 3 TERMINAL TIP MUST SINK INTO HOUSING
 - 4 PRODUCT COMPLIANT TO ROHS DIRECTIVE 2002/95/EC AND ELV DIRECTIVE 2000/53/EC
 - 5 DETECT SWITCH: INSERT CARD=ON (NORMAL=OPEN)
 - 6 SPRING RISE UP DURING PUSH-PUSH PERIOD



NO.	DESCRIPTION	Q'TY	MATERIAL
1	HOUSING	1	HIGH TEMPERATURE THERMOPLASTIC
2	TERMINAL	6	COPPER ALLOY
3	DETECT PIN LOWER	1	COPPER ALLOY
4	DETECT PIN UPPER	1	COPPER ALLOY
5	SHELL	1	STAINLESS STEEL
6	COIL SPRING	1	PIANO WIRE
7	HEART CAM	1	NYLON
8	CAM PIN	1	STAINLESS STEEL



NEW DIM TOL CTRL	EC NO: S2011-0880	2011/04/13	DRW:KHLIM	2011/04/15	CHKD:JIAN02	2011/05/27	APPR:SKTOH
REV	DESCRIPTION	QUALITY SYMBOLS					
T1		F _A =0 F _C =0 F _P =0					

GENERAL TOLERANCES (UNLESS SPECIFIED)	mm	INCH
	4 PLACES ± ---	± ---
	3 PLACES ± ---	± ---
	2 PLACES ± 0.15	± ---
	1 PLACE ± ---	± ---
	ANGULAR ± ---°	

DIMENSION STYLE		SCALE	DESIGN UNITS	THIRD ANGLE PROJECTION
MM ONLY		NTS	METRIC	
DRAWN BY	DATE	TITLE		
LHSHEN	2007/07/09	PUSH PUSH 6 PINS SIM WITH DETECT PIN&POST SALES DRAWING		
CHECKED BY	DATE			
XUXIANG	2007/08/30			
APPROVED BY	DATE			
HWWANG	2007/08/30			
MATERIAL NO.	DOCUMENT NO.			
475531001	SD-47553-101			

DRAFT WHERE APPLICABLE MUST REMAIN WITHIN DIMENSIONS		THIS DRAWING CONTAINS INFORMATION THAT IS PROPRIETARY TO MOLEX INCORPORATED AND SHOULD NOT BE USED WITHOUT WRITTEN PERMISSION	
SIZE	A3		
SHEET NO.		1 OF 1	