

Panel feed-through terminal block - VDFK 6/K - 0711056

Please be informed that the data shown in this PDF Document is generated from our Online Catalog. Please find the complete data in the user's documentation. Our General Terms of Use for Downloads are valid (<http://phoenixcontact.com/download>)



Panel feed-through terminal block, Connection method: Screw connection, Solder connection, Load current : 57 A, Cross section: 0.2 mm² - 10 mm², AWG 24 - 8, Connection direction of the conductor to plug-in direction: 0 °, Width: 10 mm, Color: gray

Product Features

- Easy fixing using plastic knurled nut or quick mounting wedge
- Touch-proof insulating housing
- Terminal blocks can be grouped
- Universal screw connection with screw locking
- Spacer plates increase clearances and creepage distances
- Strain relief can be snapped on as an option



Key Commercial Data

Packing unit	1 pc
GTIN	 4 017918 117177
Weight per Piece (excluding packing)	7.9 g
Custom tariff number	85369010
Country of origin	Poland

Technical data

General

Number of levels	1
Number of connections	2
Nominal cross section	6 mm ²
Color	gray
Insulating material	PA
Flammability rating according to UL 94	V0

Panel feed-through terminal block - VDFK 6/K - 0711056

Technical data

General

Rated surge voltage	6 kV
Pollution degree	3
Overvoltage category	III
Insulating material group	I
Connection in acc. with standard	IEC 60947-7-1
Nominal current I_N	41 A
Maximum load current	57 A
Nominal voltage U_N	500 V
Open side panel	nein
Number of positions	1

Dimensions

Width	10 mm
Length	30.2 mm
Plate thickness	1 mm ... 4 mm

Connection data

Connection side	Outside
Connection method	Screw connection
Conductor cross section solid min.	0.2 mm ²
Conductor cross section solid max.	10 mm ²
Conductor cross section flexible min.	0.2 mm ²
Conductor cross section flexible max.	6 mm ²
Conductor cross section AWG min.	24
Conductor cross section AWG max.	8
Conductor cross section flexible, with ferrule without plastic sleeve min.	0.25 mm ²
Conductor cross section flexible, with ferrule without plastic sleeve max.	6 mm ²
Conductor cross section flexible, with ferrule with plastic sleeve min.	0.25 mm ²
Conductor cross section flexible, with ferrule with plastic sleeve max.	6 mm ²
2 conductors with same cross section, solid min.	0.2 mm ²
2 conductors with same cross section, solid max.	4 mm ²
2 conductors with same cross section, stranded min.	0.2 mm ²
2 conductors with same cross section, stranded max.	4 mm ²
2 conductors with same cross section, stranded, ferrules without plastic sleeve, min.	0.25 mm ²
2 conductors with same cross section, stranded, ferrules without plastic sleeve, max.	2.5 mm ²
2 conductors with same cross section, stranded, TWIN ferrules with plastic sleeve, min.	0.5 mm ²

Panel feed-through terminal block - VDFK 6/K - 0711056

Technical data

Connection data

2 conductors with same cross section, stranded, TWIN ferrules with plastic sleeve, max.	4 mm ²
Stripping length	9 mm
Internal cylindrical gage	A5
Screw thread	M4
Tightening torque, min	1.5 Nm
Tightening torque max	1.8 Nm
Connection side	Inside
Connection method	Solder connection

Standards and Regulations

Connection in acc. with standard	CSA
	IEC 60947-7-1
Flammability rating according to UL 94	V0

Classifications

eCl@ss

eCl@ss 4.0	27141131
eCl@ss 4.1	27141131
eCl@ss 5.0	27141134
eCl@ss 5.1	27141134
eCl@ss 6.0	27141134
eCl@ss 7.0	27141134
eCl@ss 8.0	27141134

ETIM

ETIM 2.0	EC001283
ETIM 3.0	EC001283
ETIM 4.0	EC001283
ETIM 5.0	EC001283

UNSPSC

UNSPSC 6.01	30211811
UNSPSC 7.0901	39121410
UNSPSC 11	39121410
UNSPSC 12.01	39121410
UNSPSC 13.2	39121410

Panel feed-through terminal block - VDFK 6/K - 0711056

Approvals

Approvals


Approvals


CSA / UL Recognized / KEMA-KEUR / cUL Recognized / IEC/CEB Scheme / EAC / cULus Recognized


Ex Approvals

Approvals submitted

Approval details

CSA 			
	B	C	D
mm ² /AWG/kcmil	26-8	26-8	26-8
Nominal current I _N	50 A	50 A	10 A
Nominal voltage U _N	300 V	150 V	300 V

UL Recognized 			
	B	C	D
mm ² /AWG/kcmil	26-8	26-8	26-8
Nominal current I _N	50 A	50 A	10 A
Nominal voltage U _N	300 V	150 V	300 V

KEMA-KEUR 		
mm ² /AWG/kcmil	6	
Nominal current I _N	41 A	
Nominal voltage U _N	500 V	

Panel feed-through terminal block - VDFK 6/K - 0711056

Approvals

cUL Recognized			
	B	C	D
mm ² /AWG/kcmil	26-8	26-8	26-8
Nominal current I _N	50 A	50 A	10 A
Nominal voltage U _N	300 V	150 V	300 V

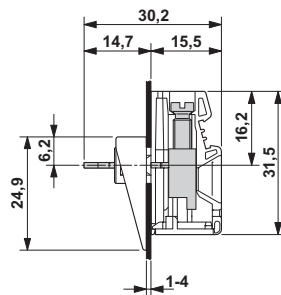
IECEE CB Scheme	
mm ² /AWG/kcmil	6
Nominal current I _N	41 A
Nominal voltage U _N	500 V

EAC

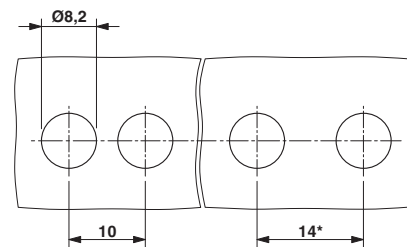
cULus Recognized

Drawings

Dimensional drawing



Dimensional drawing



* Dimensions when using the DP-VDFK 6/4 spacer plate