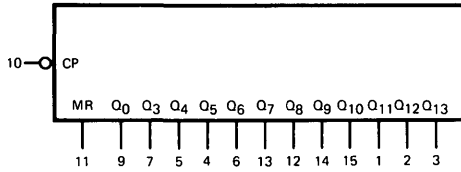


FAIRCHILD LOGIC/CONNECTION DIAGRAMS

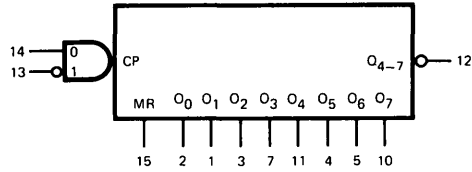
DIGITAL-CMOS

**C56  
4020B**



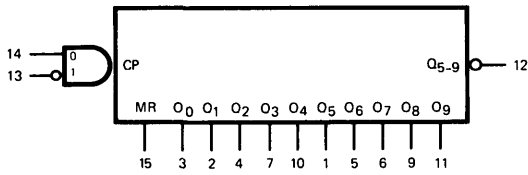
$V_{DD}$  = Pin 16  
 $V_{SS}$  = Pin 8

**C57  
4022B**



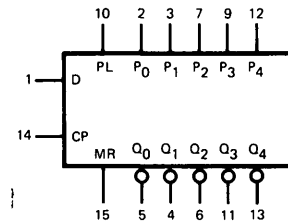
$V_{DD}$  = Pin 16  
 $V_{SS}$  = Pin 8  
NC = Pin 6, 9

**C58  
4017B**



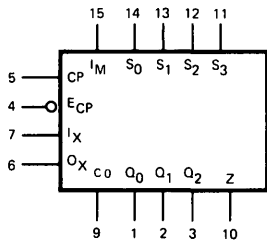
$V_{DD}$  = Pin 16  
 $V_{SS}$  = Pin 8

**C59  
4018B**



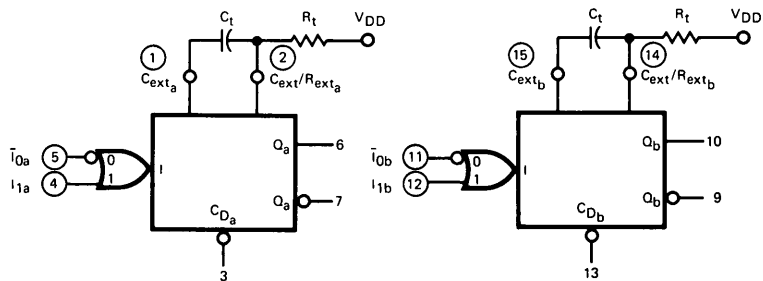
$V_{DD}$  = Pin 16  
 $V_{SS}$  = Pin 8

**C60  
4702B**



$V_{DD}$  = Pin 16  
 $V_{SS}$  = Pin 8

**C61  
4528B**



$V_{DD}$  = Pin 16  
 $V_{SS}$  = Pin 8

NOTE The Flatpak versions have the same pinouts (Connection Diagram) as the Dual In-Line Packages

FAIRCHILD DIGITAL

CMOS

MONOSTABLES

Item	Function	DEVICE NO.	Typical Pulse Width Variation (%) V <sub>DD</sub> = 15V	No. of Inputs		Resettable	Output (tpw)-ns V <sub>DD</sub> = 5.0V	Logic/Connection Diagram	Package(s)
				Positive	Negative				
1	Dual Retriggerable Resetable Monostable Multivibrator	4528B	±3%	1	1	X	300	C61	4L,6B,9B
2	Low Power Monostable/Astable Multivibrator	4047B	—	1	1	X	—	C115	3I,6A,9A
3	Dual Precision Monostable Multivibrator	4538B	±0.5%	1	1	X	200	C116	4L,6B,9B
4	Micro Power Phase Locked Loop	4046B	—	—	—	—	—	C117	4L,6B,9B

ANALOG DEVICES

Item	Function	DEVICE NO.	Enable Input	Max ON Resistance-Ω V <sub>DD</sub> = V <sub>I/S</sub> = 10V	Max OFF State Leakage Current-nA V <sub>DD</sub> = 10V	Signal Capability V	Logic/Connection Diagram	Package (s)
5	Quad Bilateral Switch	4016B	X	840	125	0-15 ±7.5	C63	3I,6A,9A
6	Quad Bilateral Switch	4066B	X	520	100	0-15 ±7.5	C63	3I,6A,9A
7	Dual 4-Channel Multiplex/Demultiplex	4052B	X	600	100	0-15 ±7.5	C64	4L,6B,9B
8	8-Channel Multiplexer/Demultiplexer	4051B	X	600	100	0-15 ±7.5	C65	4L,6B,9B
9	Triple 2-Channel Multiplex/Demultiplexer	4053B	X	600	100	0-15 ±7.5	C96	4L,6B,9B
10	16 Channel Mux/Demux	4067B	X	600	100	0-15 ±7.5	C97	4M,6Q,9U
11	4x4 Cross Point Switch	4741B	X	840	100	0-15 ±7.5	C98	4L,6B,9B