

preLink RJ45 plug, IP20 Cat.6A L-0°

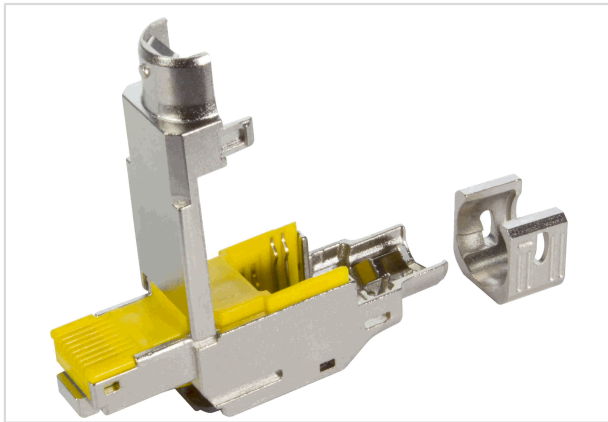


Image is for illustration purposes only. Please refer to product description.

Part number	20 82 101 0020
Specification	preLink RJ45 plug, IP20 Cat.6A L-0°
HARTING eCatalogue	https://b2b.harting.com/20821010020

Identification

Category	Connectors
Series	preLink®
Series of hoods/housings	RJ45
Element	Connector
Specification	RJ45 Straight

Version

Termination method	preLink® IDC insulation displacement termination
Gender	Male
Shielding	Shielded
Number of contacts	8
Coding	RJ45

Technical characteristics

Transmission characteristics	Cat. 6A Class E _A up to 500 MHz
Data rate	10 Mbit/s
	100 Mbit/s
	1 Gbit/s
	2.5 Gbit/s
	5 Gbit/s
Limiting temperature	-40 ... +85 °C
Relative humidity	95 % Non-condensing (operation)
Mating cycles	≥750



Pushing Performance
Since 1945

Technical characteristics

Degree of protection acc. to IEC 60529 IP20

Cable diameter 5 ... 9 mm

Material properties

Material (insert) Zinc die-cast, nickel-plated

Specifications and approvals

Approvals DNV GL

PROFINET Yes

Commercial data

Packaging size 1

Net weight 26.46 g

Country of origin Latvia

European customs tariff number 85366990

GTIN 5713140224209

eCl@ss 27440114 Rectangular connector (for field assembly)