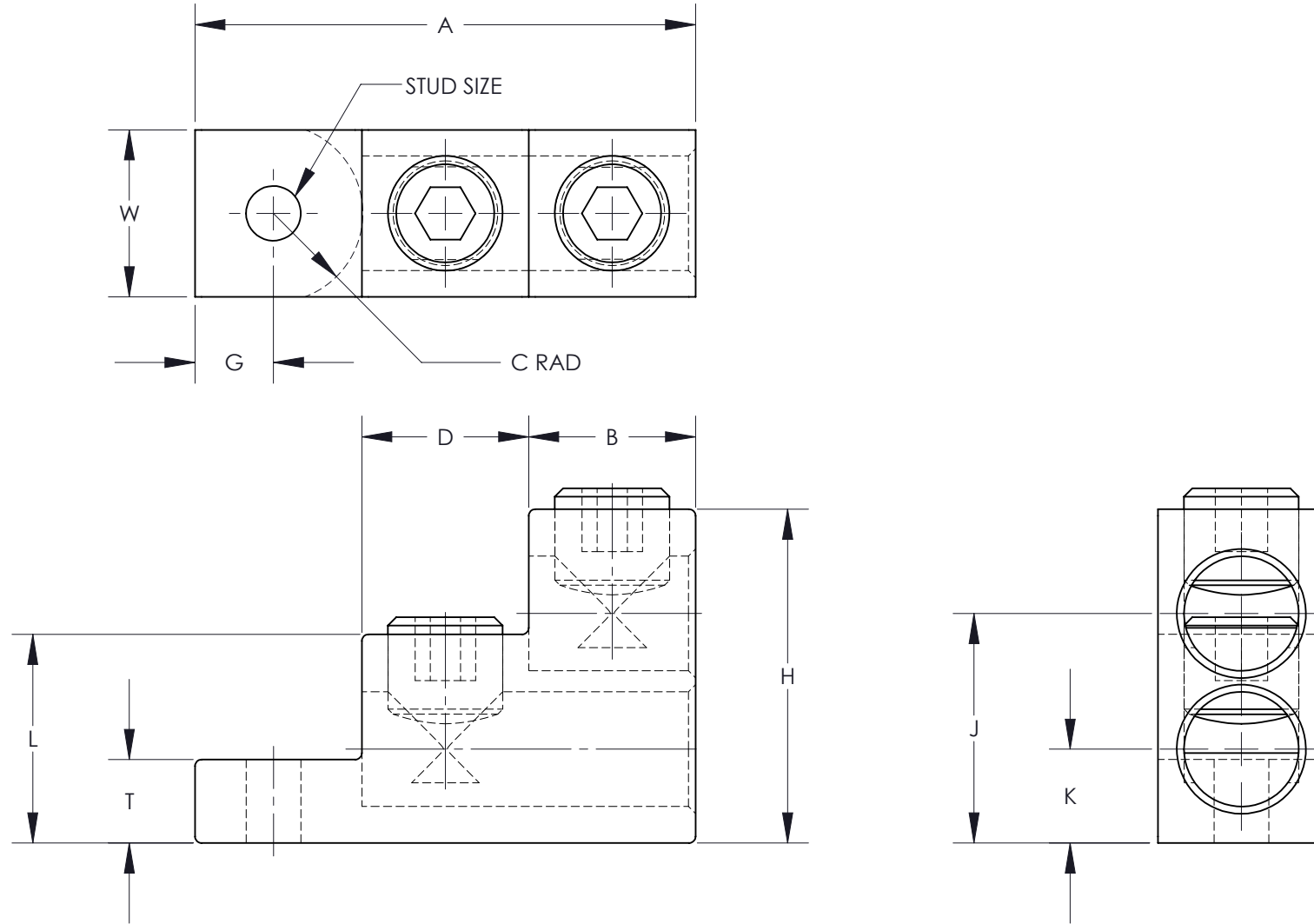


THIS COPY IS PROVIDED ON A RESTRICTED BASIS AND IS NOT TO BE USED IN ANY WAY DETRIMENTAL TO THE INTERESTS OF PANDUIT CORP.

NOTES:

- MATERIAL:
BODY - ALUMINUM, TIN PLATED
SCREW - ALUMINUM, TIN PLATED
- UL LISTED & CSA CERTIFIED FOR USE UP TO 600V & TEMPERATURE RATED 90°C (AL9CU)
- DUAL RATED FOR USE WITH COPPER OR ALUMINUM STRANDED CODE CONDUCTOR
- THESE PARTS ARE RoHS COMPLIANT
- USE OF OXIDE INHIBITING JOINT COMPOUND LIKE PANDUIT CMP-100 RECOMMENDED FOR PAD TO PAD AND CONDUCTOR SURFACES
- SEE PACKAGING LABEL FOR TIGHTENING TORQUE INFORMATION
- PKG QTY:
3 = 3



| PART NUMBER | DIMENSIONS - IN [mm] +/- .02 [.5] | | | | | | | | | | | STUD SIZE | WIRE STRIP LENGTH | WIRE RANGE | HEX KEY* |
|----------------|-----------------------------------|----------------|----------------|---------------|---------------|----------------|----------------|---------------|----------------|---------------|----------------|-----------|-------------------|----------------|----------|
| | A | B | D | G | T | H | W | C MAX. | J | K | L | | | | |
| LAM2SA300-56-3 | 3.00 [76.2] | 1.00 [25.4] | 1.00 [25.4] | .47 [11.9] | .50 [12.7] | 2.00 [50.8] | 1.00 [25.4] | .53 [13.5] | 1.38 [35.1] | .56 [14.2] | 1.25 [31.8] | 5/16 | 1.02 [25.9] | 300kcmil-6 AWG | 5/16 |
| LAM2SA300-38-3 | 3.00 [76.2] | 1.00 [25.4] | 1.00 [25.4] | .47 [11.9] | .50 [12.7] | 2.00 [50.8] | 1.00 [25.4] | .53 [13.5] | 1.38 [35.1] | .56 [14.2] | 1.25 [31.8] | 3/8 | 1.02 [25.9] | 300kcmil-6 AWG | 5/16 |

* HEX SIZE MAY DIFFER FROM CHART. DIFFERENCE IN SIZE WILL NOT AFFECT FIT, FORM, OR FUNCTION OF PART

| | | | | | | | |
|-----|------|------|------|-----|---------------------|---|-----------------|
| | | | | | | TITLE LAM2SA SERIES ALUMINUM MECHANICAL LUGS CUSTOMER DRAWING | |
| | | | | | | ITEM REVISION NAME N41360BB-C41360/04 | |
| | | | | | | DATASET FILE NAME C41360/04.SLDDRW | |
| | | | | | | UNLESS OTHERWISE SPECIFIED, DIMENSIONAL TOLERANCES ARE: IN [mm] .X ± .XX ± | |
| | | | | | | MATERIAL SEE NOTES | |
| | | | | | | DRAWING NUMBER C41360_04 | |
| | | | | | | THIRD ANGLE PROJECTION | |
| | | | | | | DRAWN BY CJW | |
| | | | | | | DATE 12/02 | |
| | | | | | | CHK SCALE NONE | |
| | | | | | | SHEET 1 OF 1 | |
| | | | | | | SIZE B | |
| 04 | 2/13 | JHNU | JHNU | RGB | REVISED TITLE BLOCK | | N41360BB-C41360 |
| REV | DATE | BY | CHK | APR | DESCRIPTION | | ECN |